

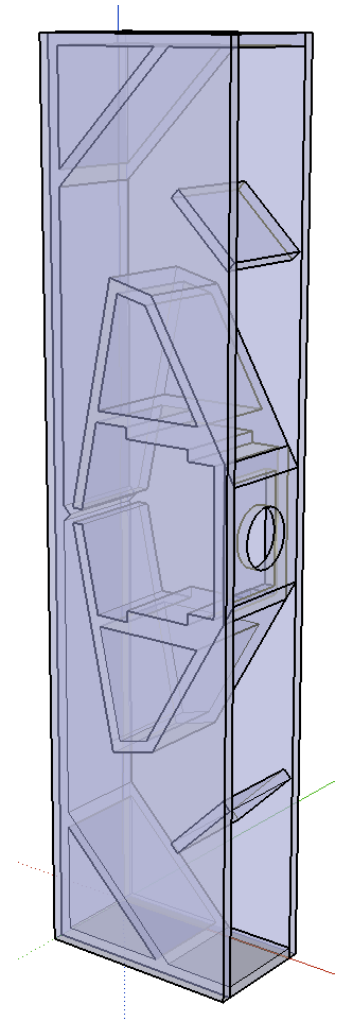
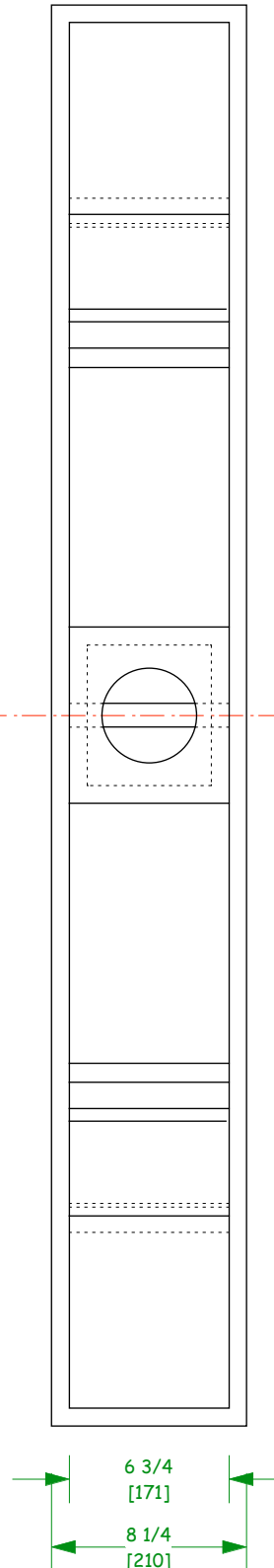
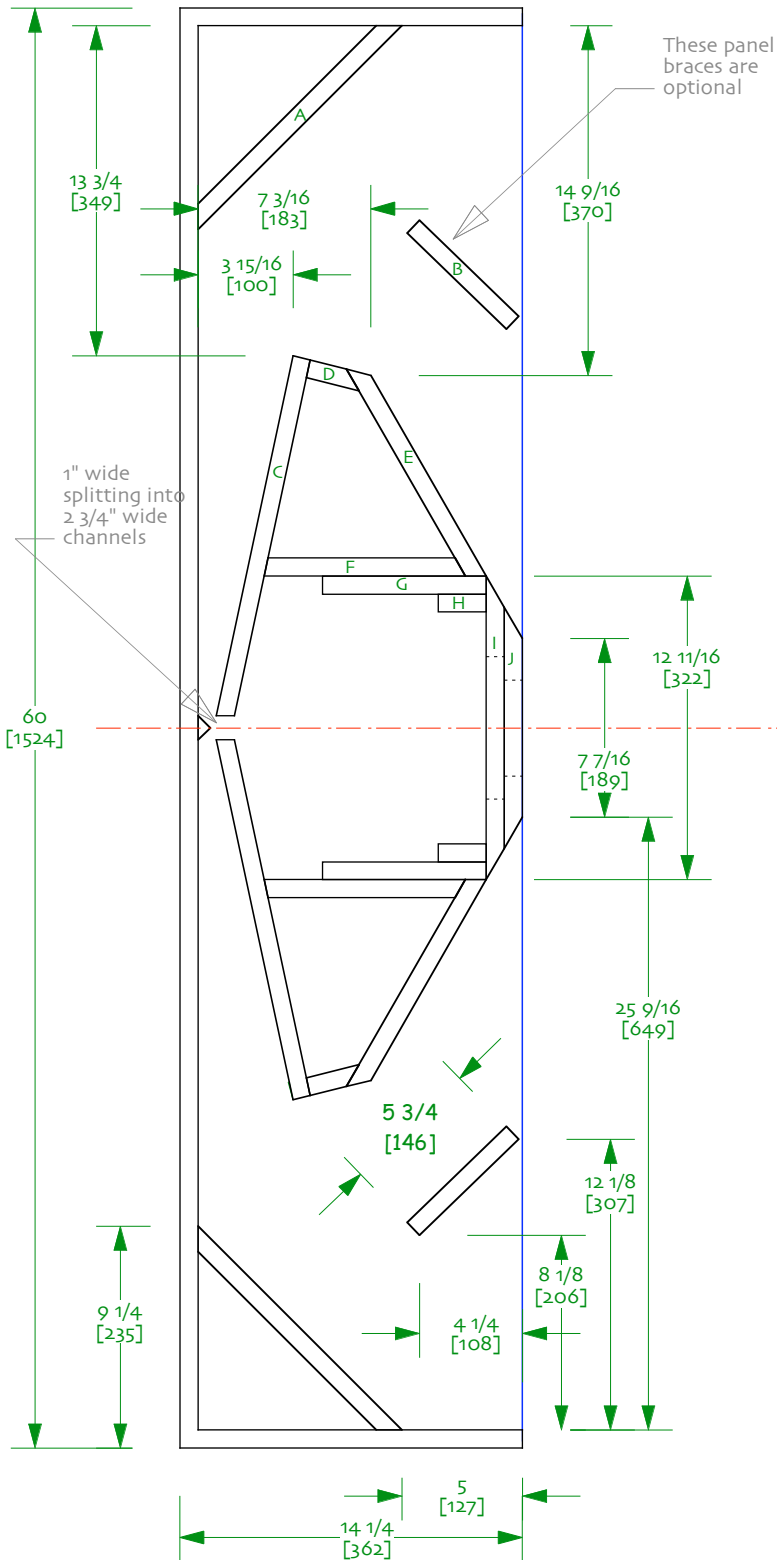


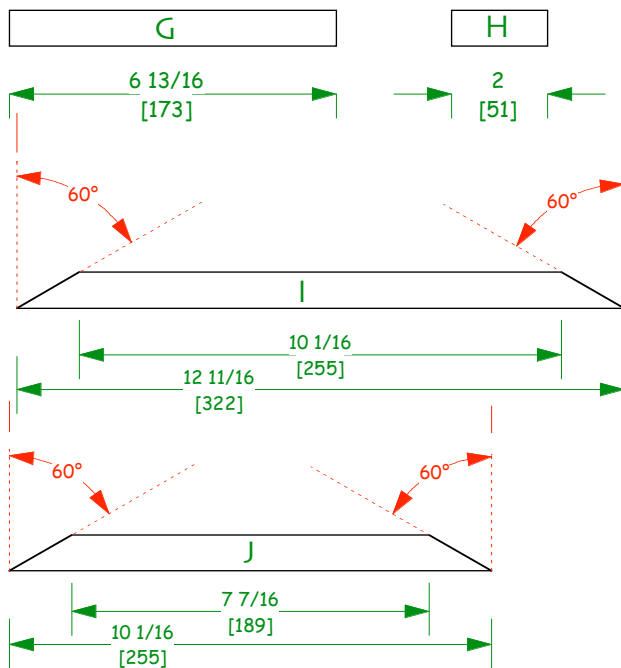
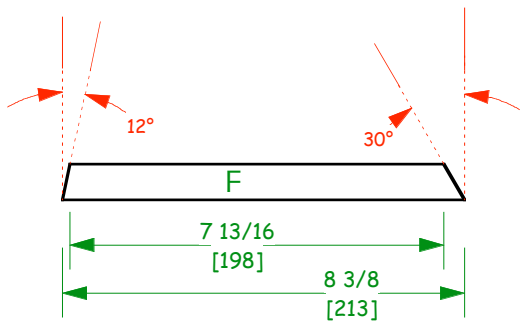
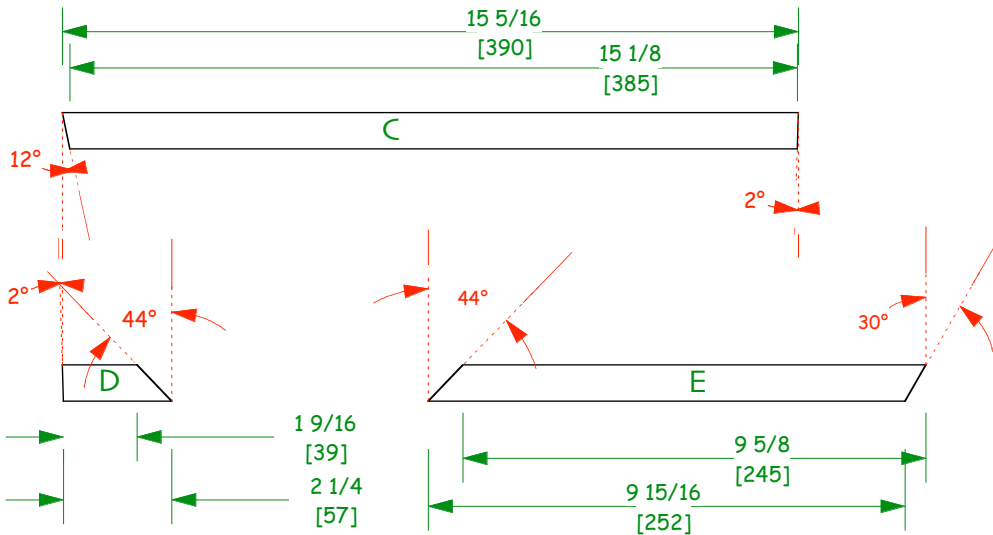
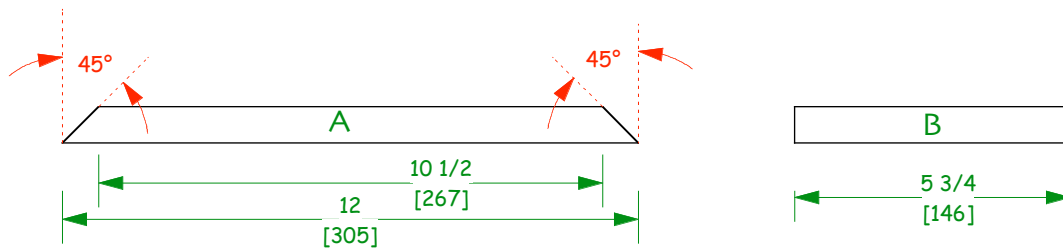
Harvey -- Spawn of Frugel-Horn
 FE126e BVR/Double Mouth Horn
 Sheet 0 -- panel placement
 designed by Scott Lindgren
 drawn by dld
 3-january-2007

Notes:

0/ drawn using 3/4" (19mm) material

1/ also suited for a range of other 4-5"
 (100-140mm) drivers





VIKING

Harvey -- Spawn of Frugel-Horn
 FE126e BVR/Double Mouth Horn
 Sheet 1 -- internal panel details
 designed by Scott Lindgren
 drawn by dld
 3-january-2007

Notes:

o/ drawn using $\frac{3}{4}$ " (19mm) material

1/ all these panels are $6 \frac{3}{4}$ " (171mm) long

2/ actual measured angles -- space filing glue & a file should do the trick on some of them