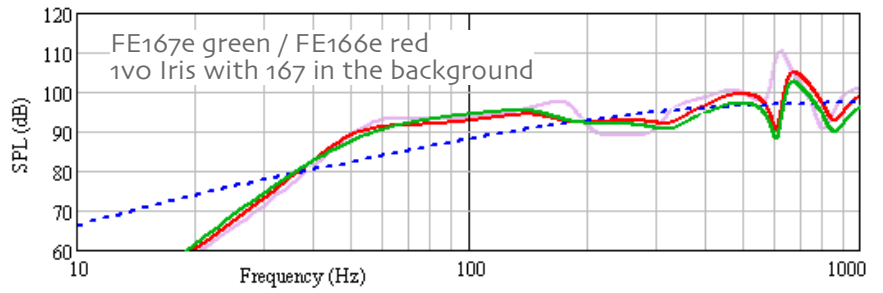
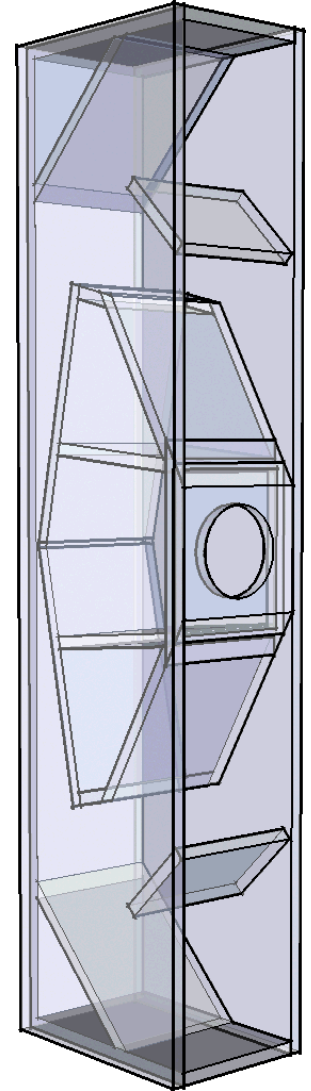
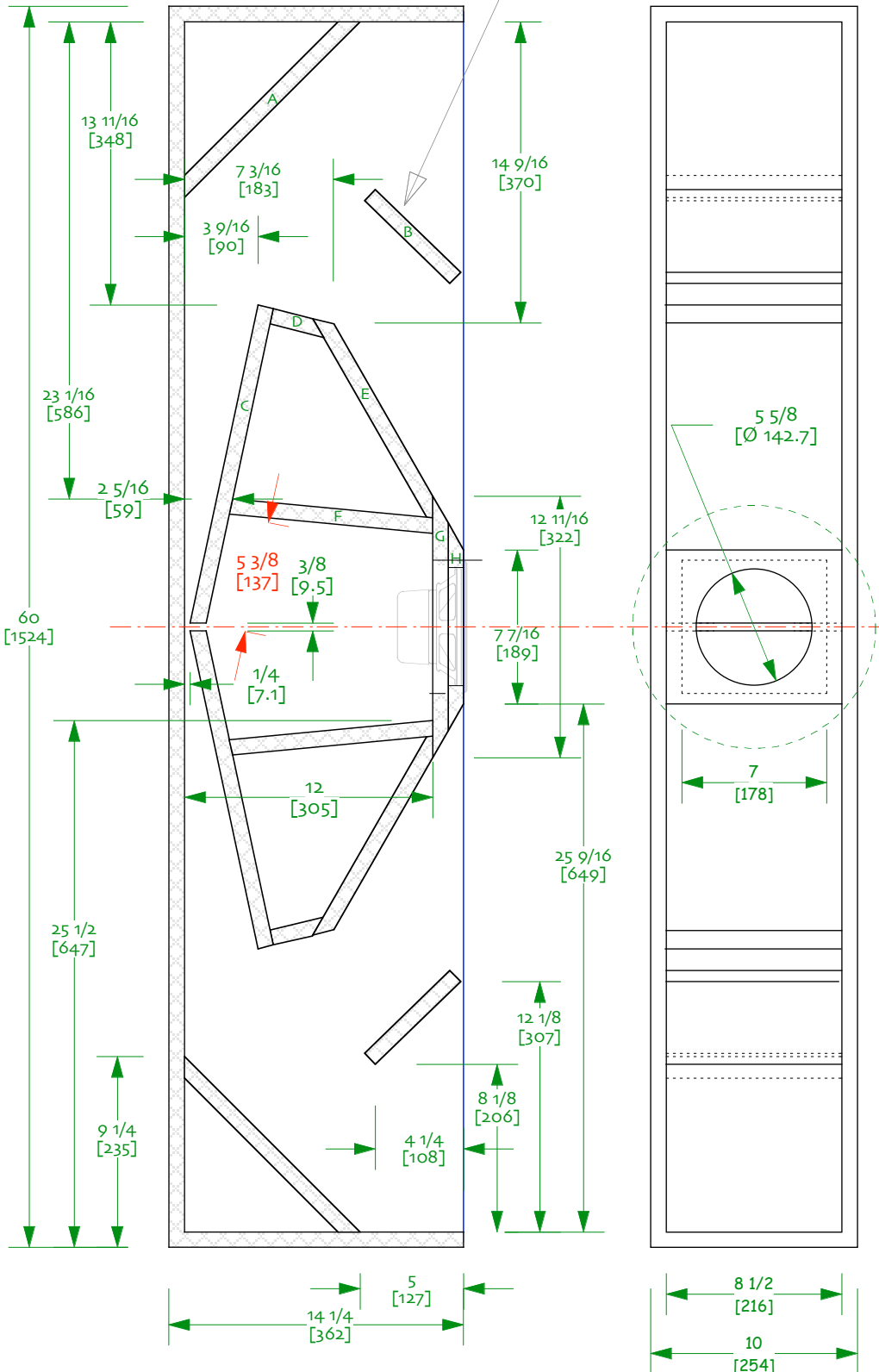




Iris 1v1 -- Spawn of Frugel-Horn
 FE167e BVR/Double Mouth Horn
 Sheet 0 -- panel placement
 designed by Scott Lindgren
 drawn by dld
 06-july-2007

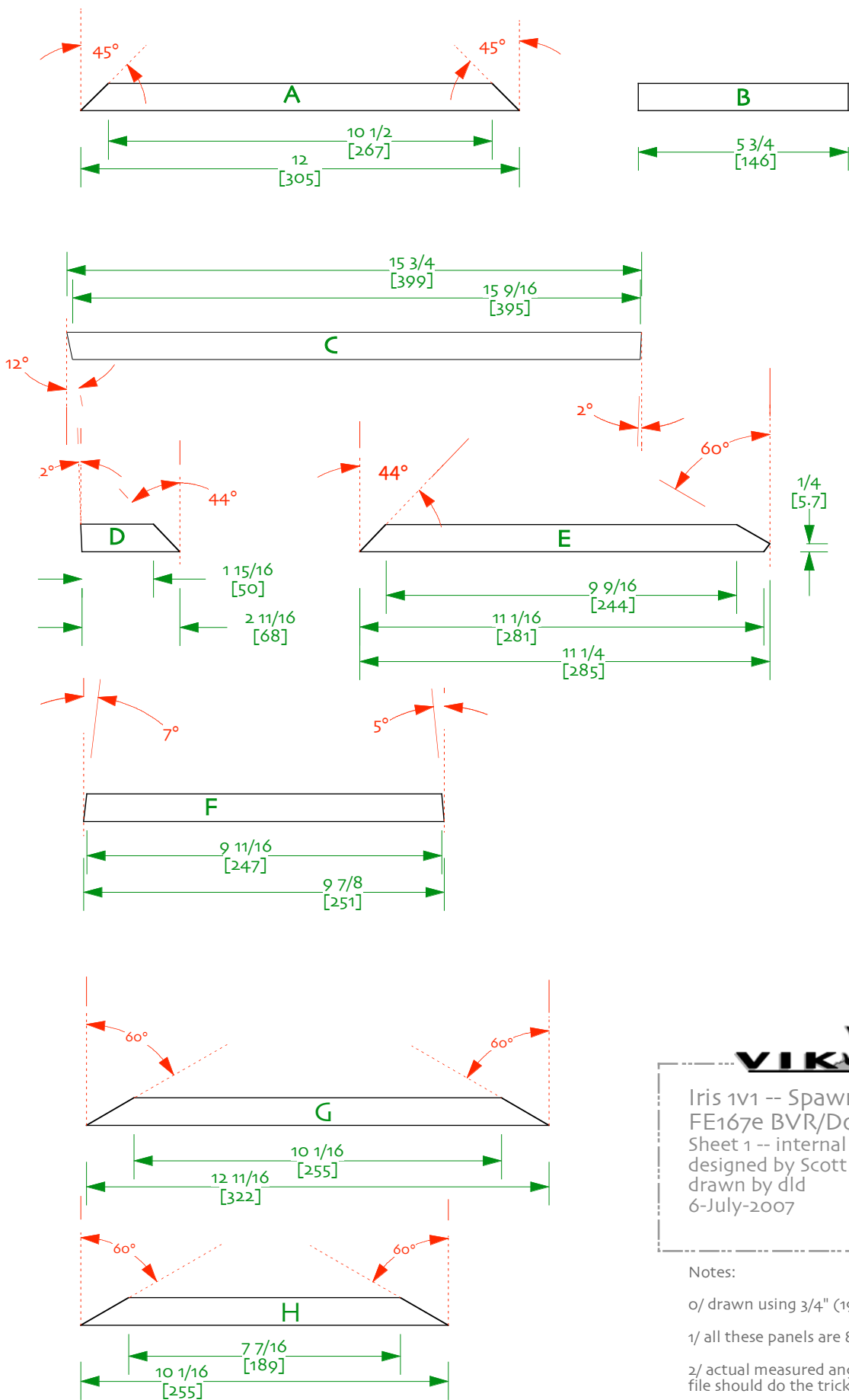


These panel braces are optional



Notes:

- 0/ drawn using 3/4" (19mm) material -- void free plywood highly recommended
- 1/ also suited for a wide range of other 6" (150-170mm) drivers
- 2/ optional supraBaffle should have a diameter of X" (yz mm)
- 3/ the size of the rectangular cutout in subBaffle (G) is not critical



Iris 1v1 -- Spawn of Frugel-Horn
 FE167e BVR/Double Mouth Horn
 Sheet 1 -- internal panel details
 designed by Scott Lindgren
 drawn by dld
 6-July-2007

- Notes:
- o/ drawn using 3/4" (19mm) material
 - 1/ all these panels are 8 1/2" (216mm) long
 - 2/ actual measured angles -- space filling glue & a file should do the trick on some of them