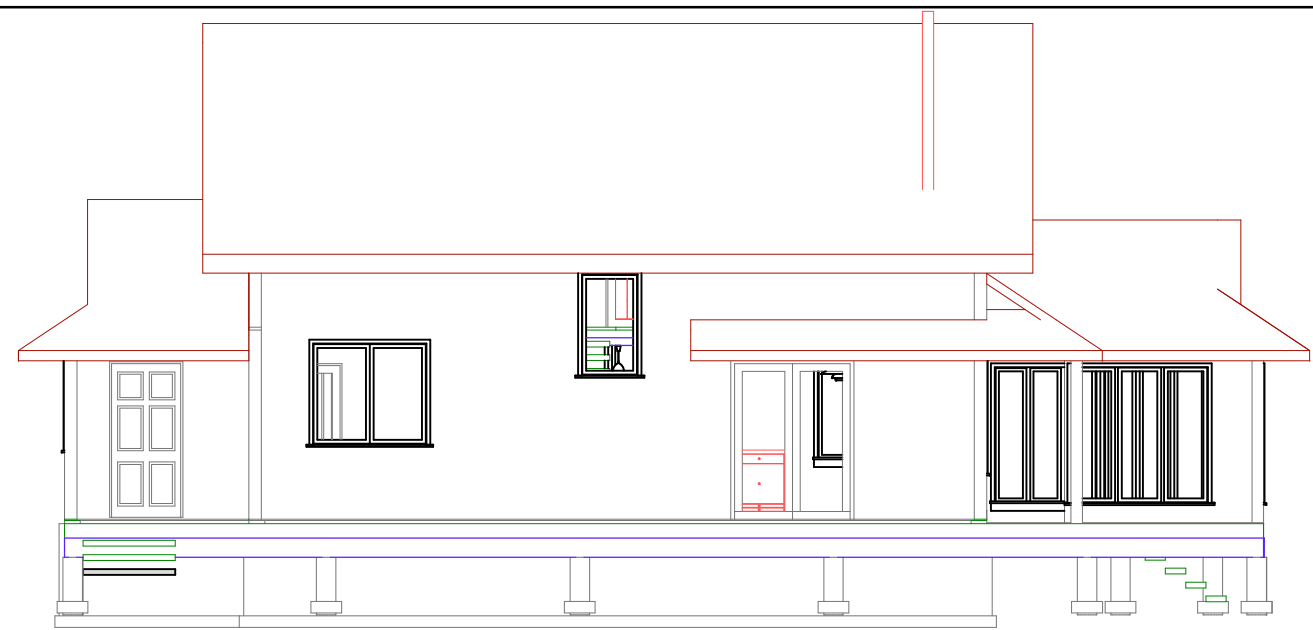
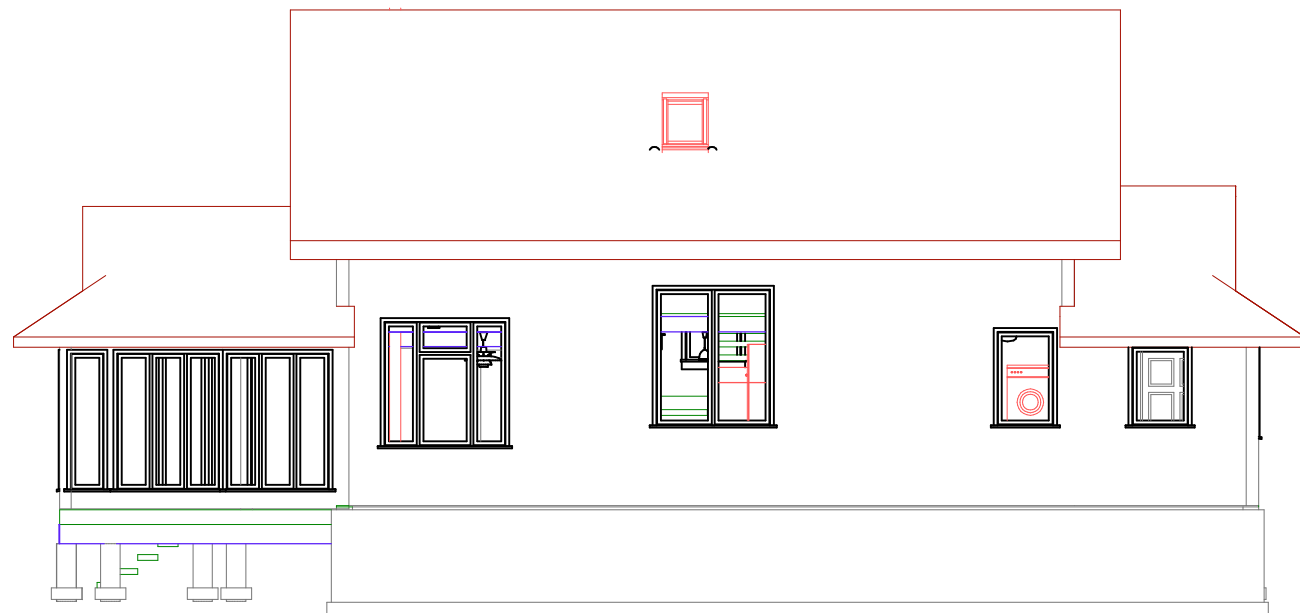


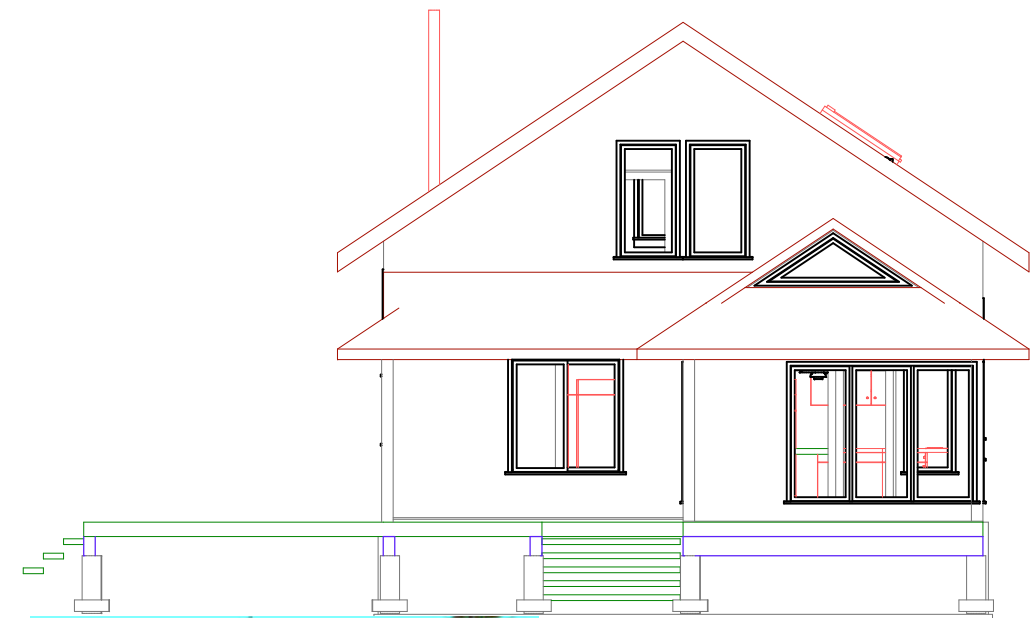
Elevation 2



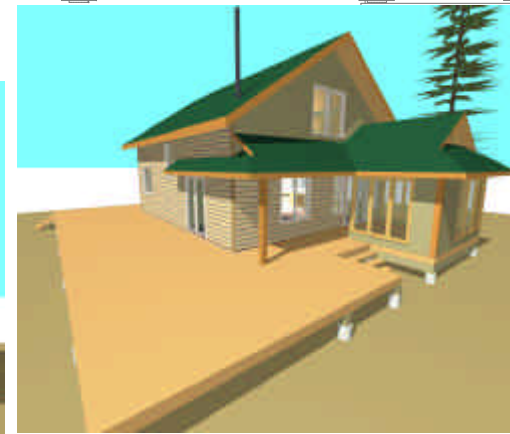
Elevation 1



Elevation 3



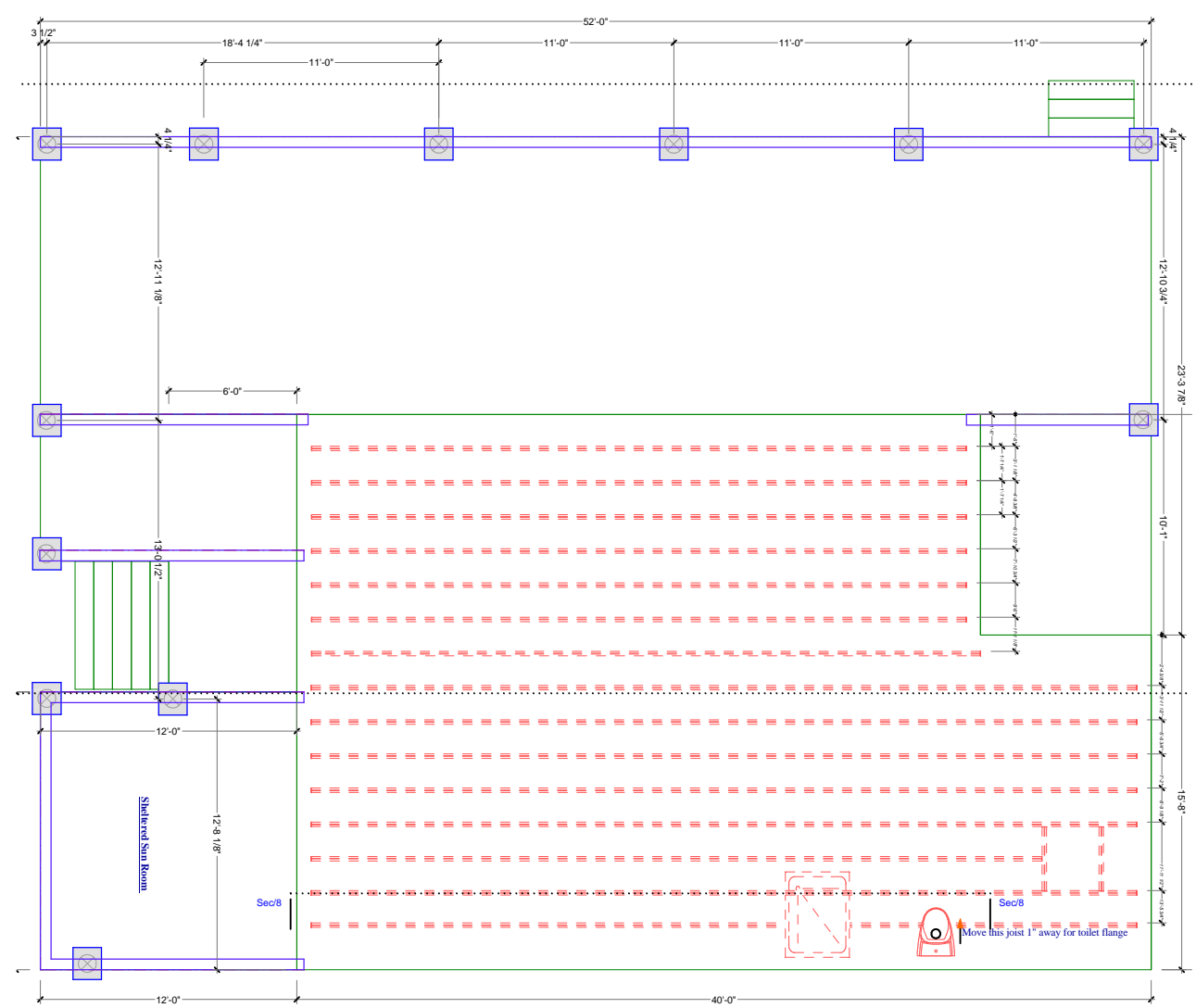
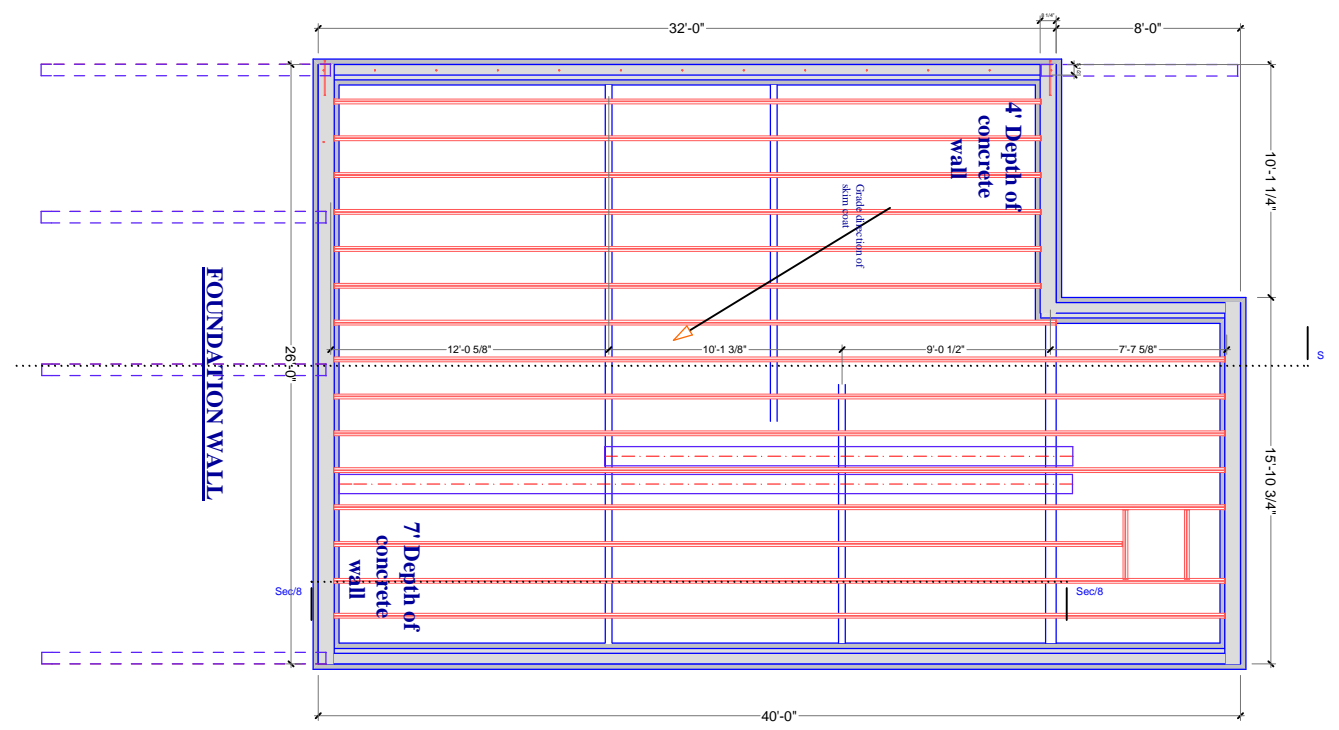
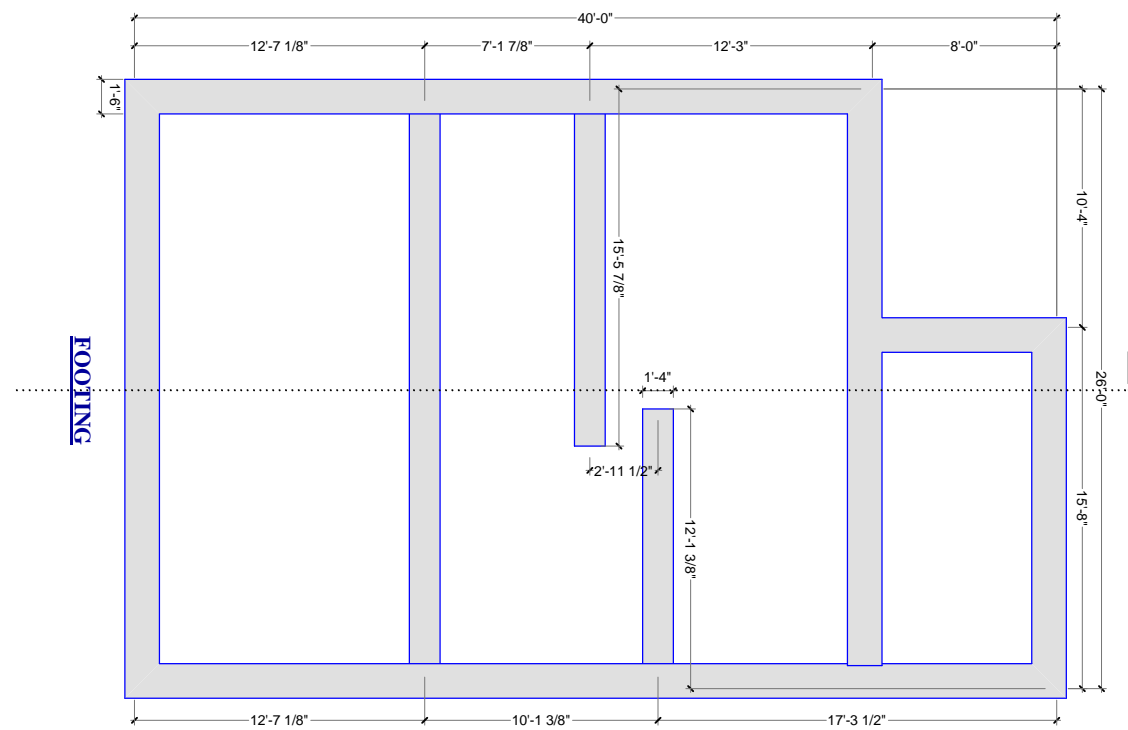
Elevation 4



ENERGY
EFFICIENT
HOMES

STRUCTURAL
INSULATED
PANELS

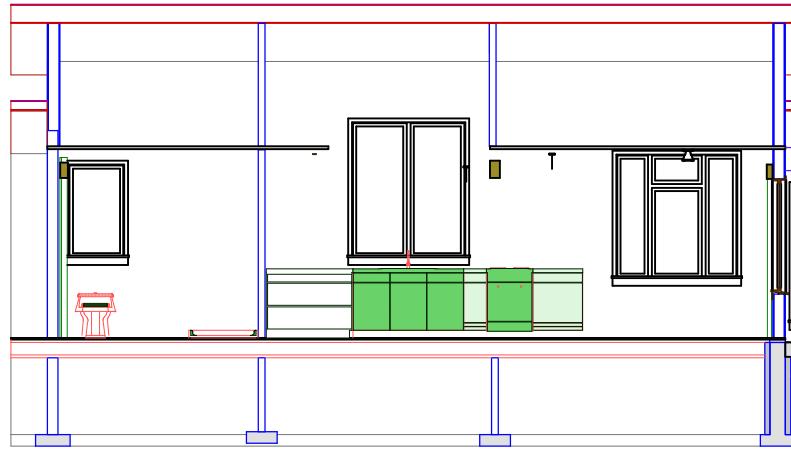
877-868-8686
www.sipbuilding.com
10000 1st Ave. S.E.
Bellevue, WA 98004
P.O. Box 400700
Seattle, WA 98140
www.sipbuilding.com



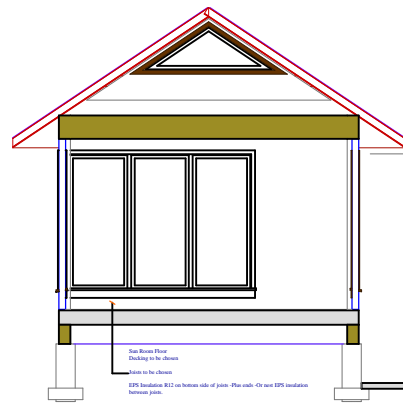
ENERGY EFFICIENT HOMES

STRUCTURAL INSULATED PANELS

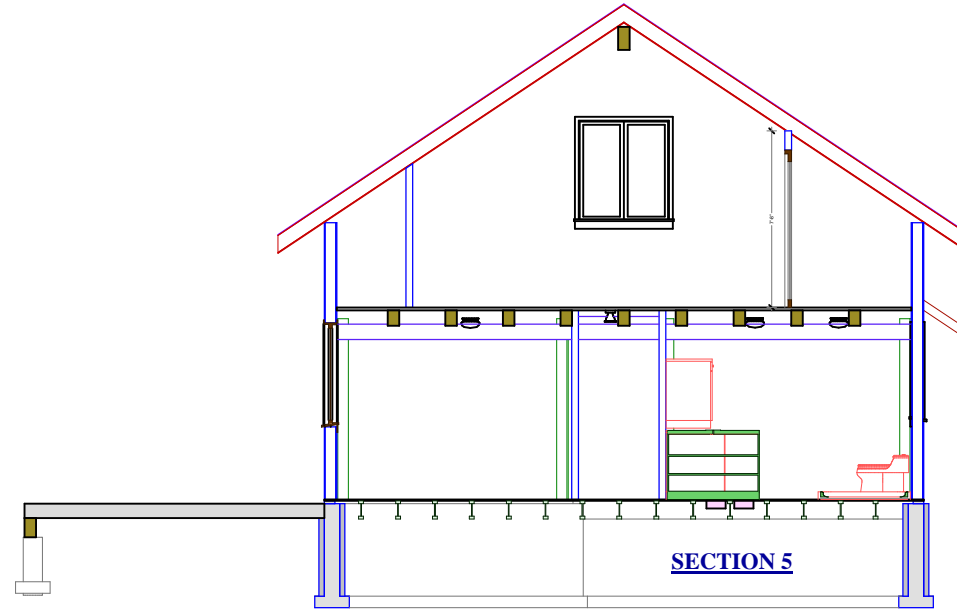
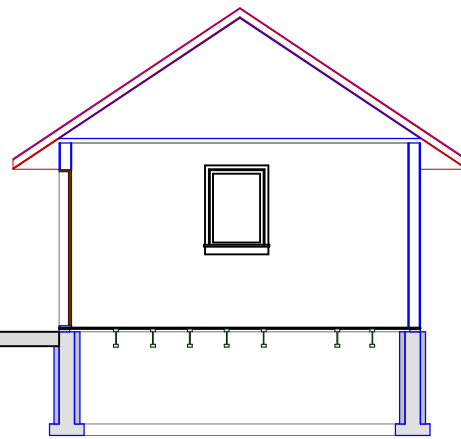
8700 Highway 27, Box 100
 Houston, Texas 77054
 Phone: 281.444.1111
 Fax: 281.444.1112
 Website: www.sips.com



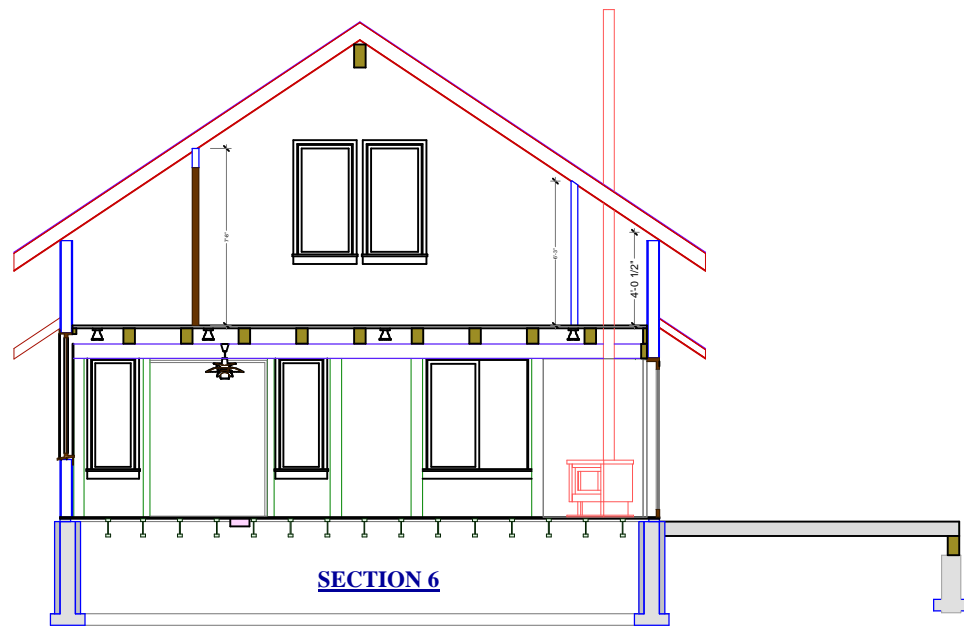
Section 8



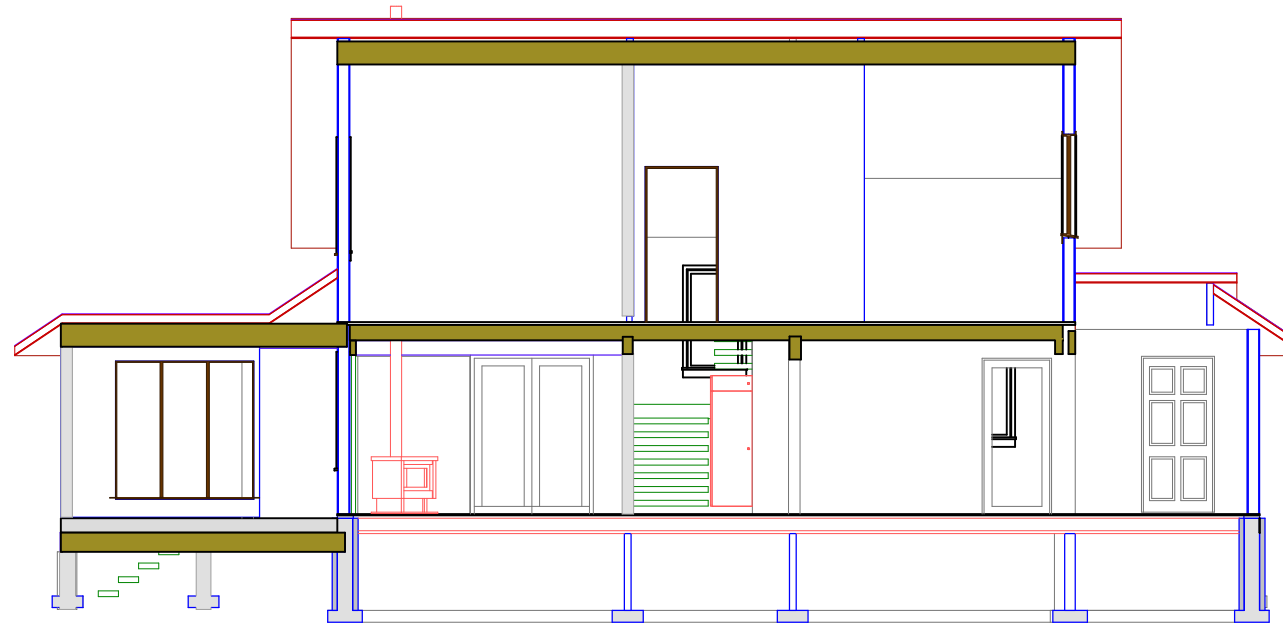
Section 2



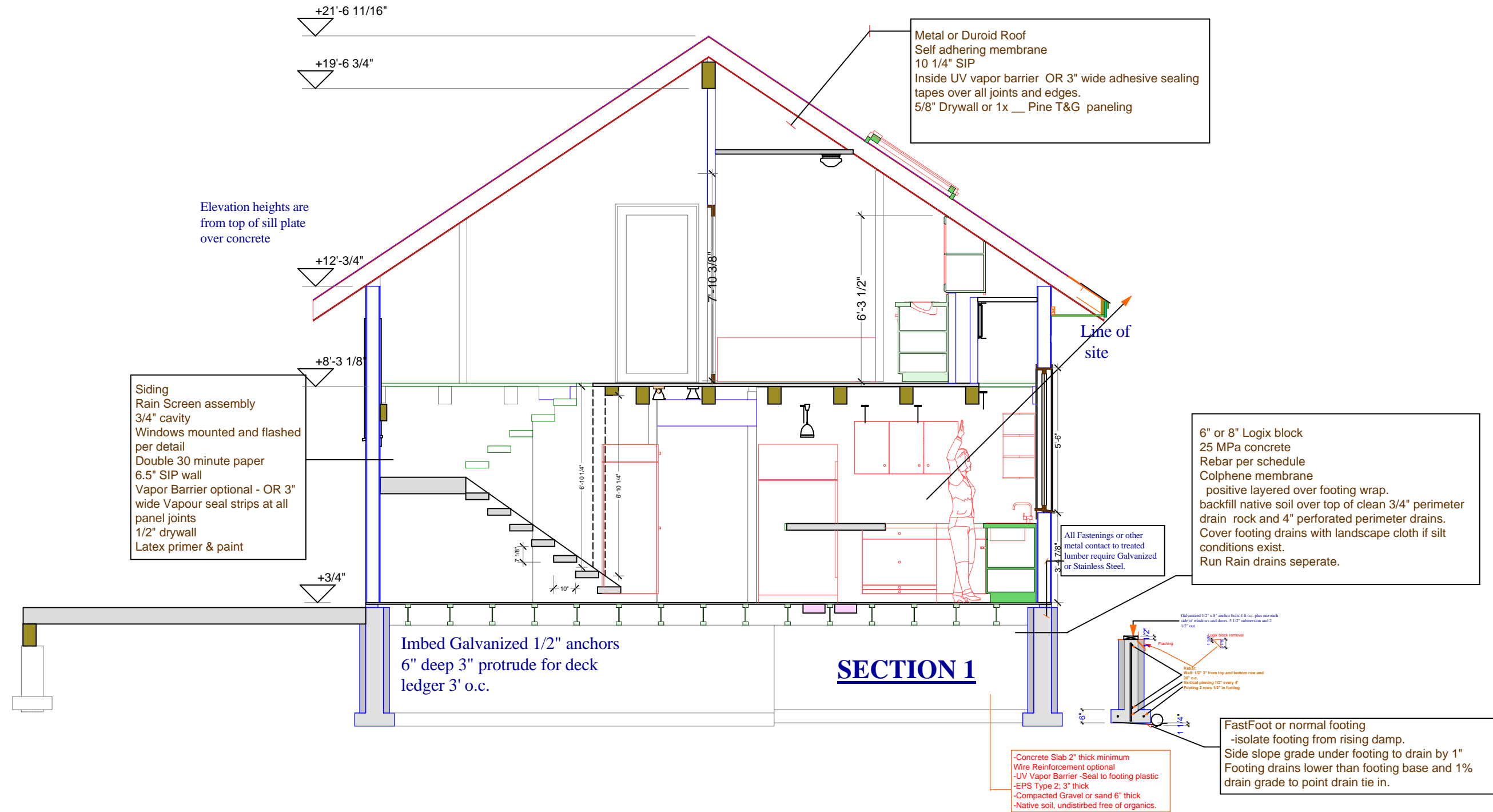
SECTION 5



SECTION 6



Section 7



Elevation heights are from top of sill plate over concrete

Metal or Duroid Roof
 Self adhering membrane
 10 1/4" SIP
 Inside UV vapor barrier OR 3" wide adhesive sealing tapes over all joints and edges.
 5/8" Drywall or 1x ___ Pine T&G paneling

Siding
 Rain Screen assembly
 3/4" cavity
 Windows mounted and flashed per detail
 Double 30 minute paper
 6.5" SIP wall
 Vapor Barrier optional - OR 3" wide Vapour seal strips at all panel joints
 1/2" drywall
 Latex primer & paint

6" or 8" Logix block
 25 MPa concrete
 Rebar per schedule
 Colphene membrane
 positive layered over footing wrap.
 backfill native soil over top of clean 3/4" perimeter drain rock and 4" perforated perimeter drains.
 Cover footing drains with landscape cloth if silt conditions exist.
 Run Rain drains separate.

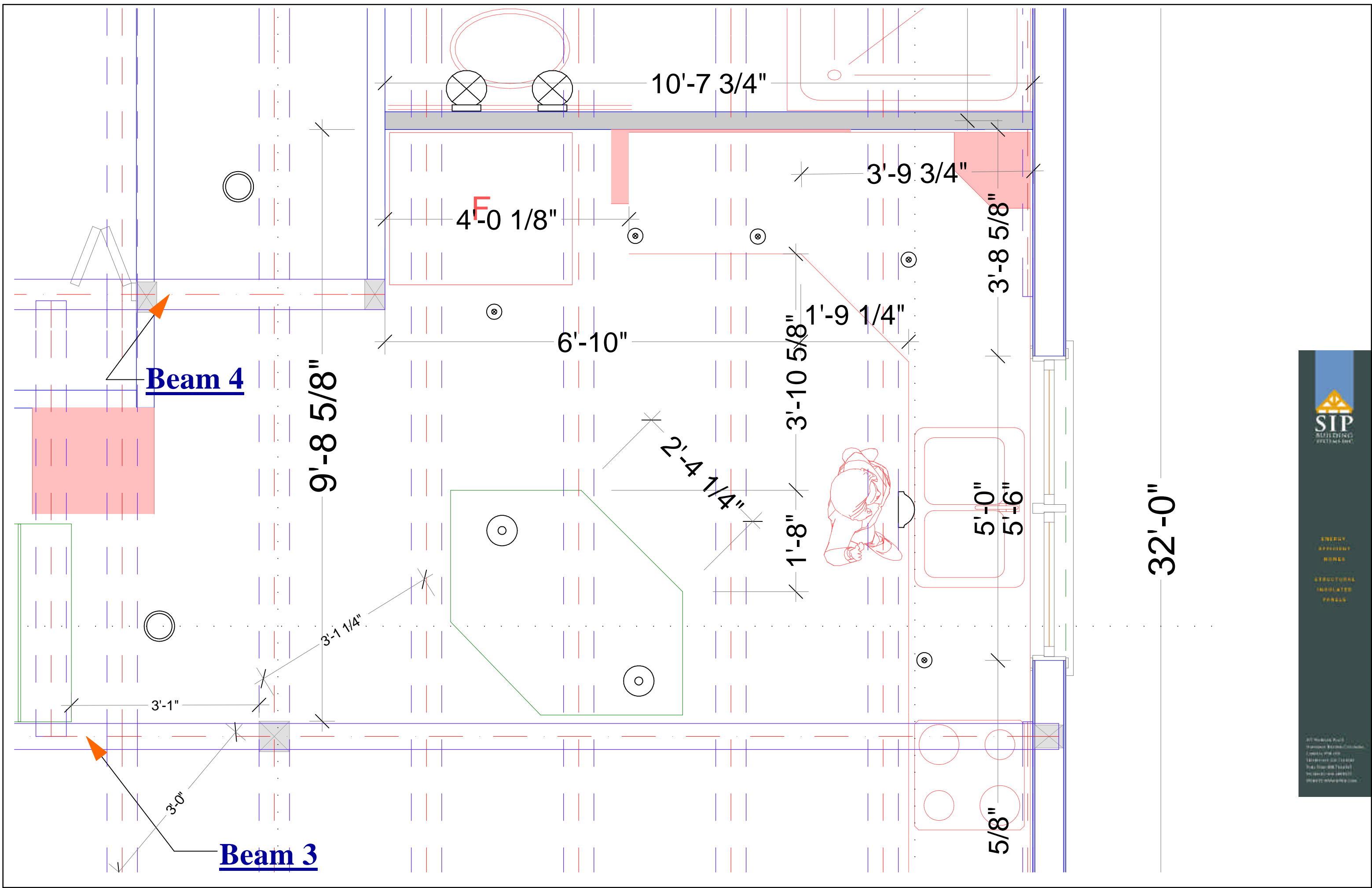
All Fastenings or other metal contact to treated lumber require Galvanized or Stainless Steel.

Imbed Galvanized 1/2" anchors
 6" deep 3" protrude for deck ledger 3' o.c.

SECTION 1

-Concrete Slab 2" thick minimum
 Wire Reinforcement optional
 -UV Vapor Barrier -Seal to footing plastic
 -EPS Type 2; 3" thick
 -Compacted Gravel or sand 6" thick
 -Native soil, undisturbed free of organics.

FastFoot or normal footing
 -isolate footing from rising damp.
 Side slope grade under footing to drain by 1"
 Footing drains lower than footing base and 1% drain grade to point drain tie in.



Beam 4

Beam 3

F
4'-0 1/8"

10'-7 3/4"

3'-9 3/4"

3'-8 5/8"

1'-9 1/4"

6'-10"

3'-10 5/8"

9'-8 5/8"

2'-4 1/4"

1'-8"

5'-0"

5'-6"

32'-0"

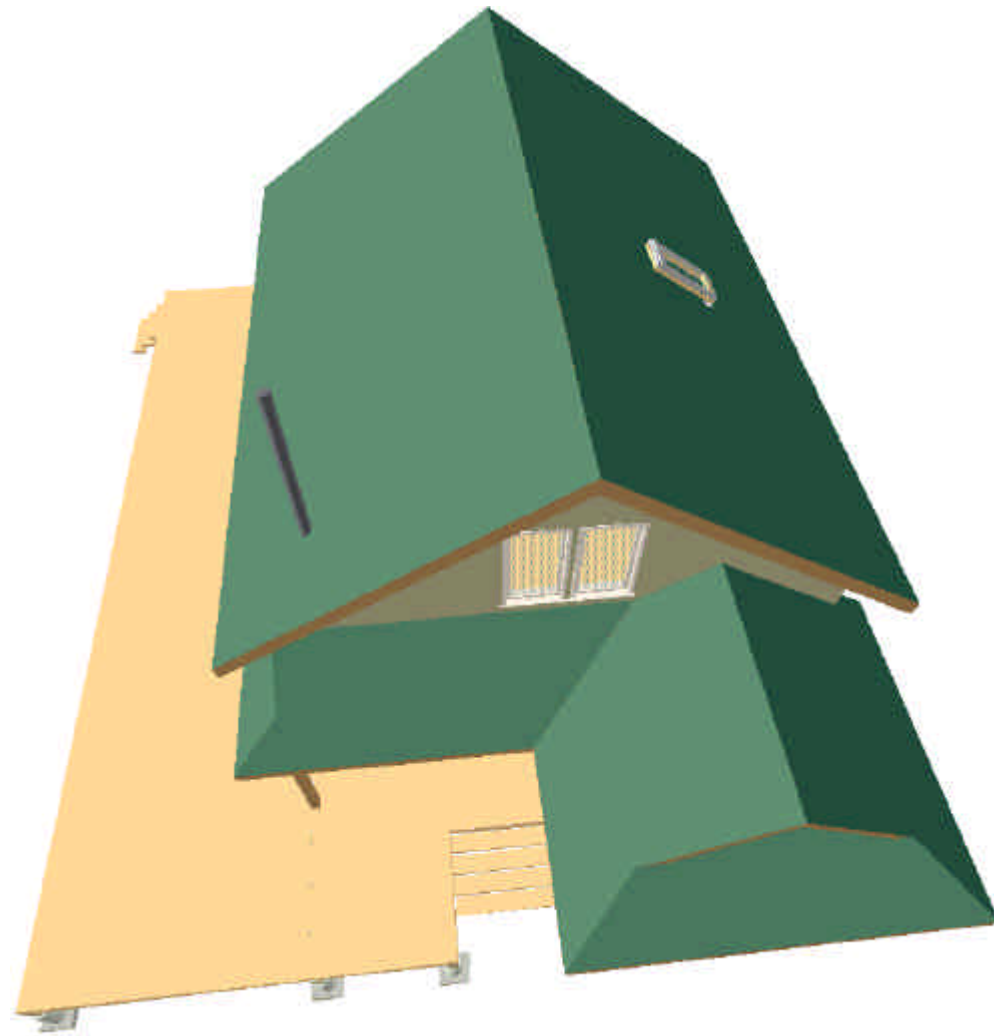
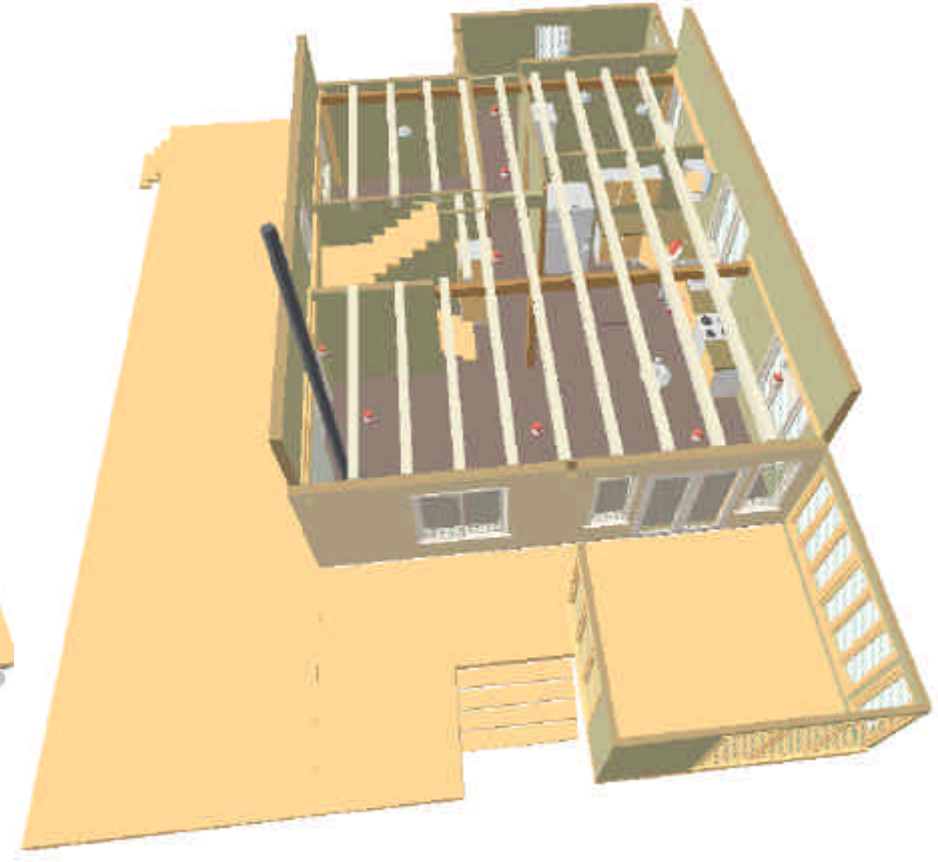
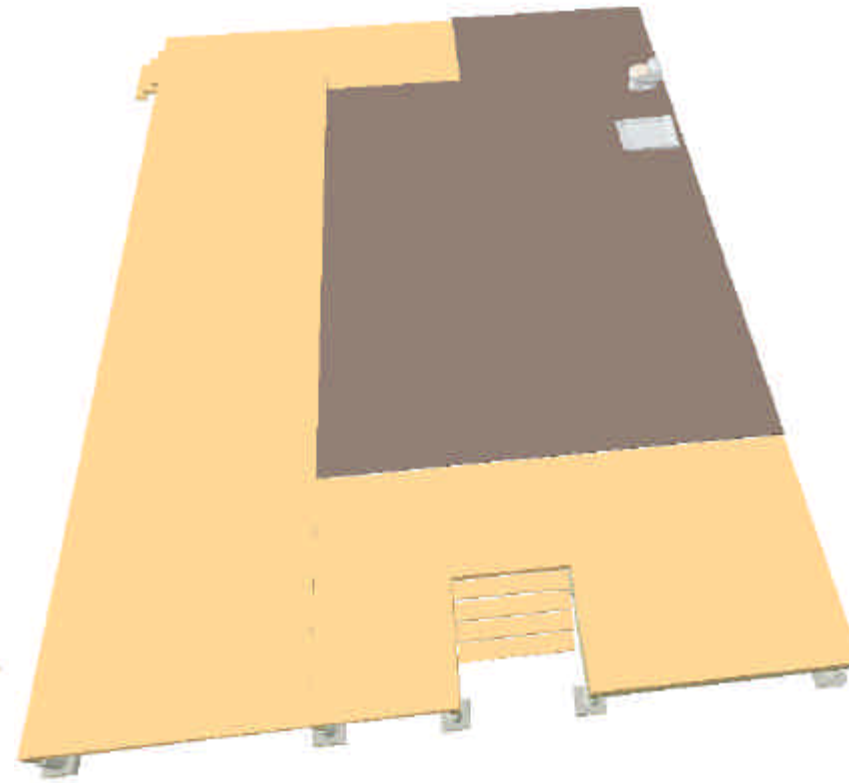
5/8"

SIP
BUILDING
SYSTEMS, INC.

ENERGY
EFFICIENT
HOMES

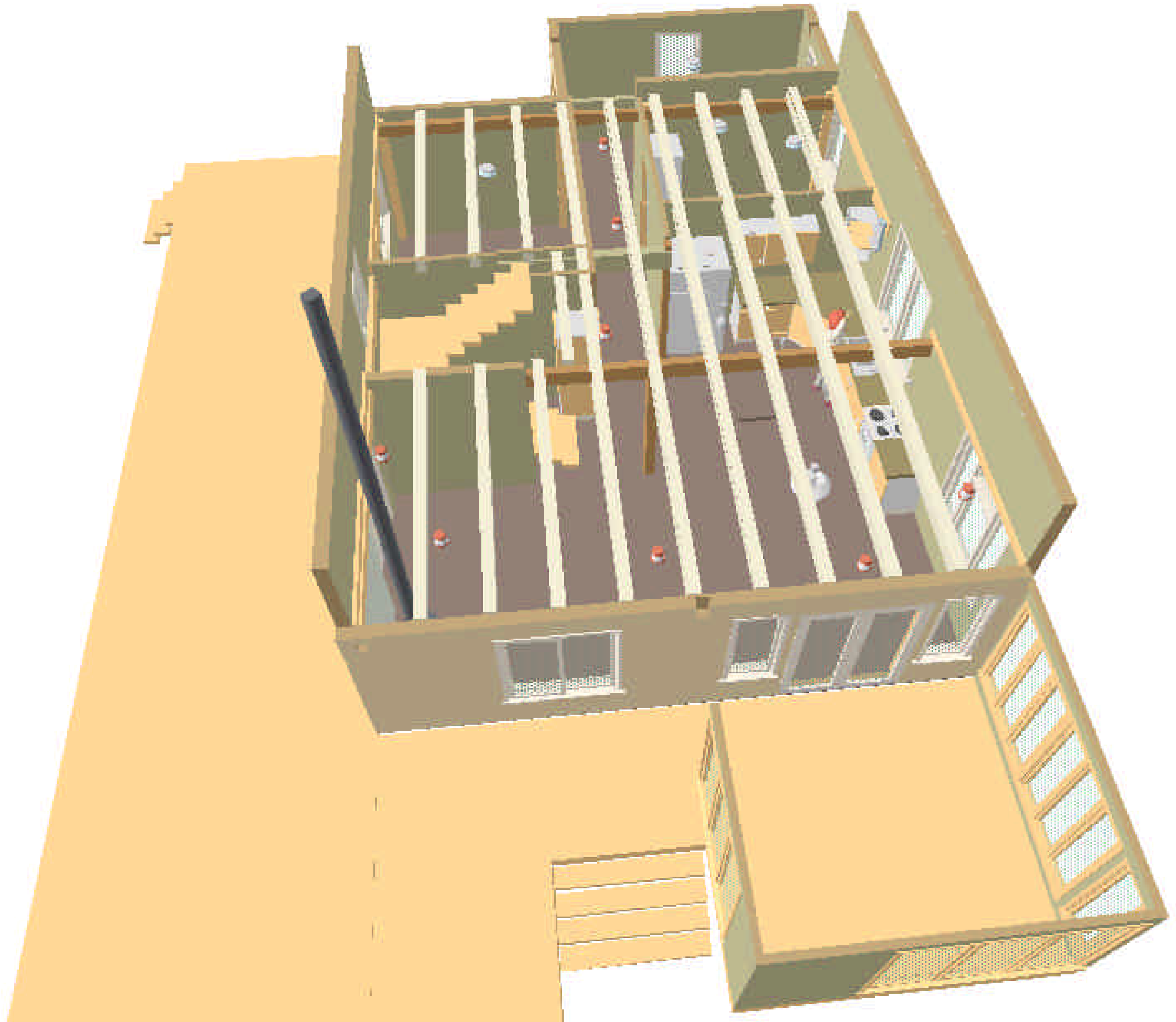
STRUCTURAL
INSULATED
PANELS

8700 Wilson Road
Houston, Texas 77054
713.261.1111
www.sipbuilding.com



ENERGY
EFFICIENT
HOMES
STRUCTURAL
INSULATED
PANELS

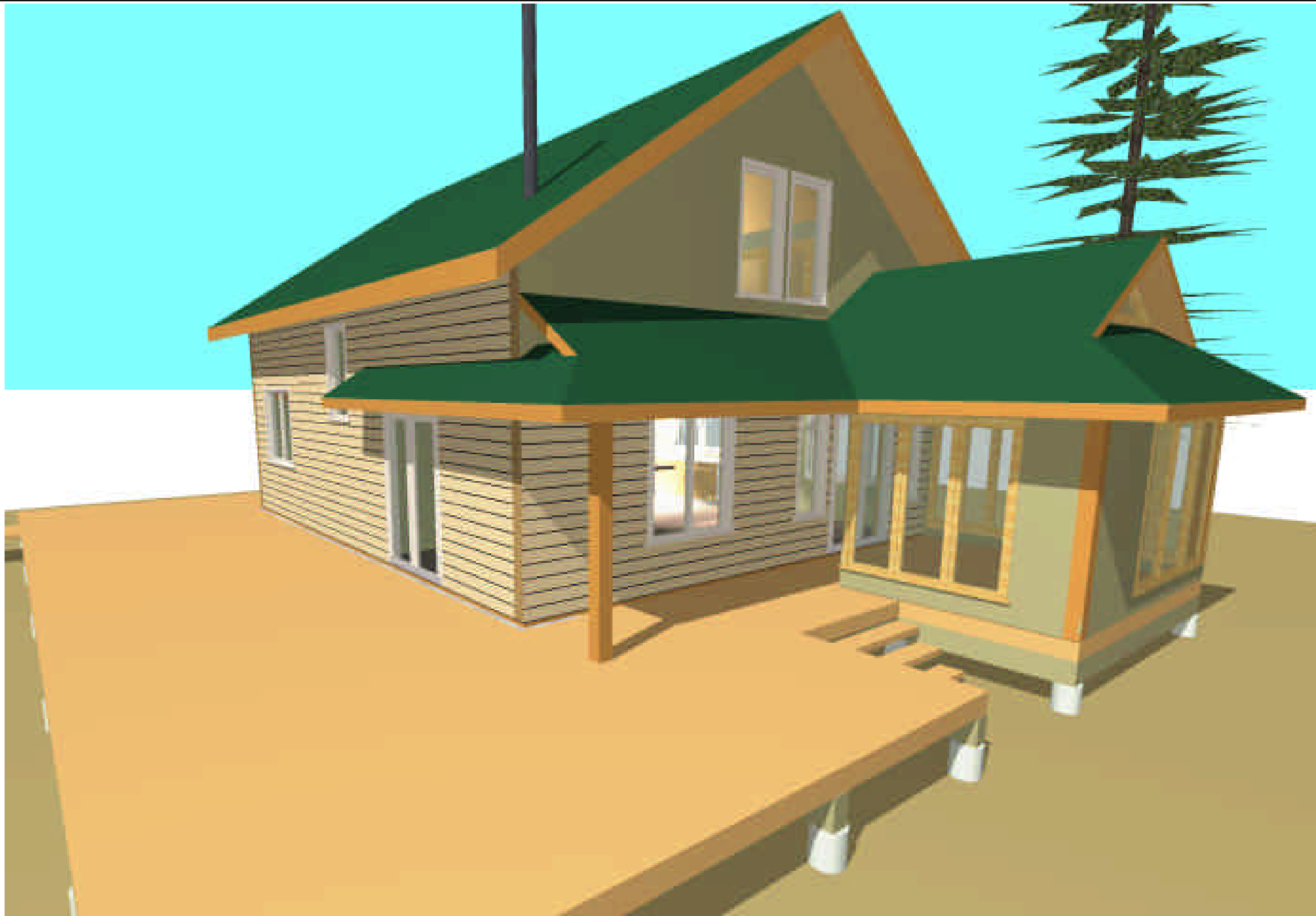
87 Madison Road
Madison, Wisconsin 53705
608.271.1111
www.sipbuilding.com



ENERGY
EFFICIENT
HOMES

STRUCTURAL
INSULATED
PANELS

877-868-8686
www.sipbuilding.com
1000 S. 10th St.
Tulsa, OK 74106
© 2011 SIP Building Systems, Inc.



ENERGY
EFFICIENT
HOMES

STRUCTURAL
INSULATED
PANELS

877-868-8686
www.sipbuilding.com
10000 10th Ave
Littleton, CO 80120
USA
© 2011 SIP Building Systems
www.sipbuilding.com