

# Wacom Tablet Productivity Enhancement in Corel® Painter™

John Derry



©2005 John Derry

I recently discovered a useful productivity enhancement that I'd like to share with *Wacom Intuos3* and *Cintiq 21UX* owners.

I've owned a *Wacom Intuos3* tablet for about a year. When I initially received it, I found that when using it with *Corel Painter IX*, the *Touch Strips* and *ExpressKeys* (located on either side of the drawing area) were a nuisance and that I would inadvertently hit/touch them with my drawing hand. To eliminate the problem, I disabled them.

Well, I recently had one of those Aha! moments and realized that I could take advantage of this functionality for productive purposes. I've mapped Painter's *Increase Brush Size* and *Decrease Brush Size* keys to the *Touch Strip*.

Since I'm left-handed, I applied this functionality to the right *Touch Strip* (I keep the left *Touch Strip* disabled to avoid accidental input when my left palm occasionally rubs it while drawing). Right-handers may want to alternatively apply this functionality to their left *Touch Strip/ExpressKeys* set.

This new functionality enables me to paint and interactively adjust my brush size. The size change increment is adjustable in the Preferences: *General* palette. I personally prefer a 2 pixel increment, but you can set it to any interval you'd like.

Once I mapped the *Touch Strip*, I played around with the adjacent *ExpressKeys* and found that they make very useful screen adjusting shortcuts. I've mapped the keys to *Zoom In*, *Zoom Out*, *Fit in Window*, and *Toggle* between *Full Screen* and *Window* modes. All this is now accomplished without interrupting my drawing/painting activity.

I'm assuming that this functionality will also work with the *Cintiq 21UX* (which also has *ExpressKeys* and *Touch Strips*). I don't have one, so I can't test it, but I believe the drivers are the same.

*Viva la Painter!*

*John Derry is a pioneer of digital painting and one of the original authors of Corel® Painter™. Since 1985, he has leveraged his background in drawing and painting to advance the look and experience of traditional art-making tools on the computer. John has a bachelor's degree and a master's degree in Fine Art and is a practicing artist and photographer. He is currently serving as Corel's Painter Ambassador-at-Large. John's Web site is at [www.pixlart.com](http://www.pixlart.com).*

# Mapping the Wacom Intuos3 Touch Strip and ExpressKeys to Control Painter's Brush Size and Window Zooming

*John Denny*

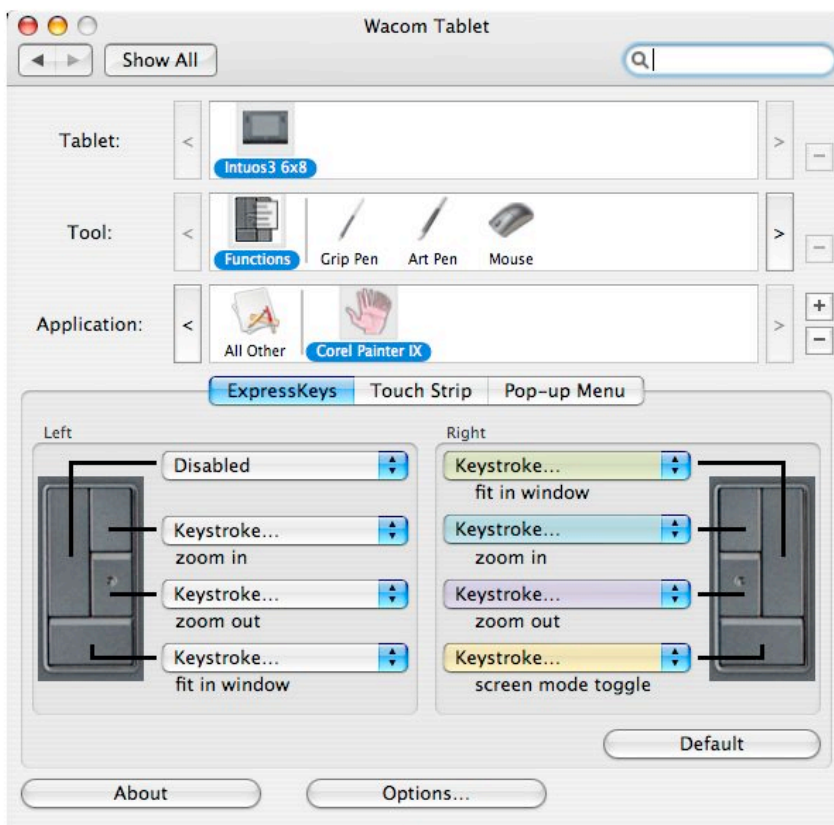
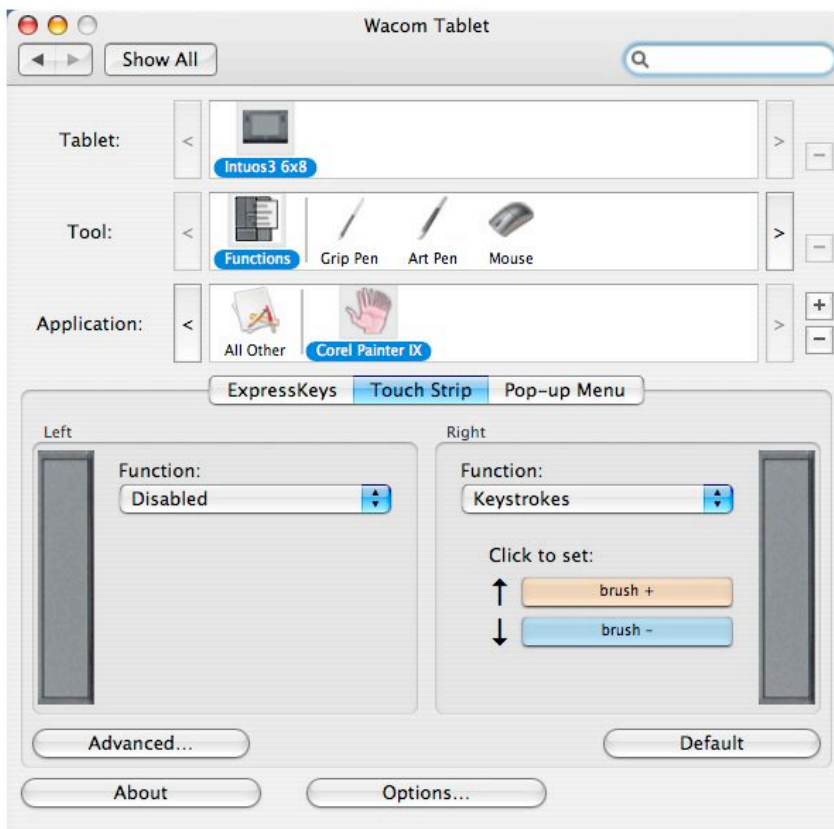
With the Touch Strip function set to *Keystrokes*, set the upper pop-up to the "]" key and the lower pop-up to the "[" key.

You can now use your Touch Strip to increase and decrease the current brush size.

"]" key

"[" key

*Note: I'm left-handed; right-handers will probably want to use these mappings on the left Touch Strip and ExpressKeys. This allows you to keep your pen in hand and make adjustments with the non-drawing hand.*



With the ExpressKeys function set to *Keystroke...*, apply the keyboard commands listed below.

You can now use your ExpressKeys to control image zooming and Screen Mode Toggle..

**CTRL/CMD + 0**

**CTRL/CMD + =**

**CTRL/CMD + -**

**CTRL/CMD + M**

CTRL: Windows CONTROL key  
 CMD: Mac COMMAND (⌘) key