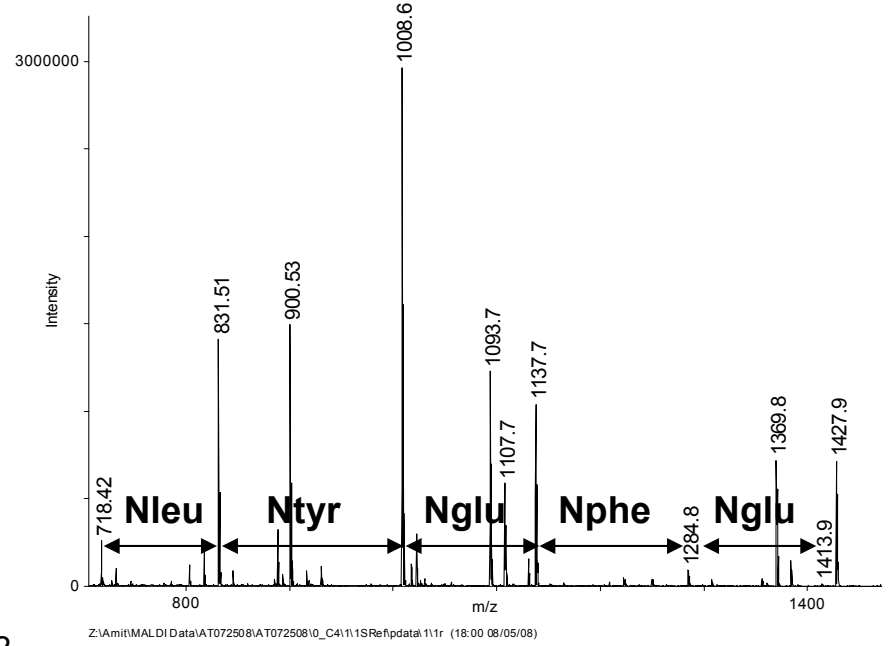
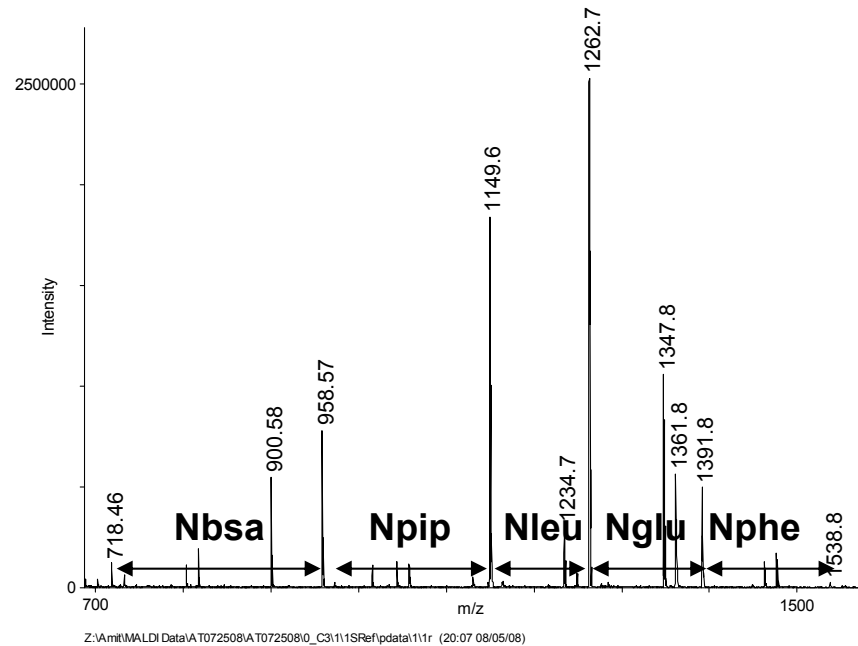
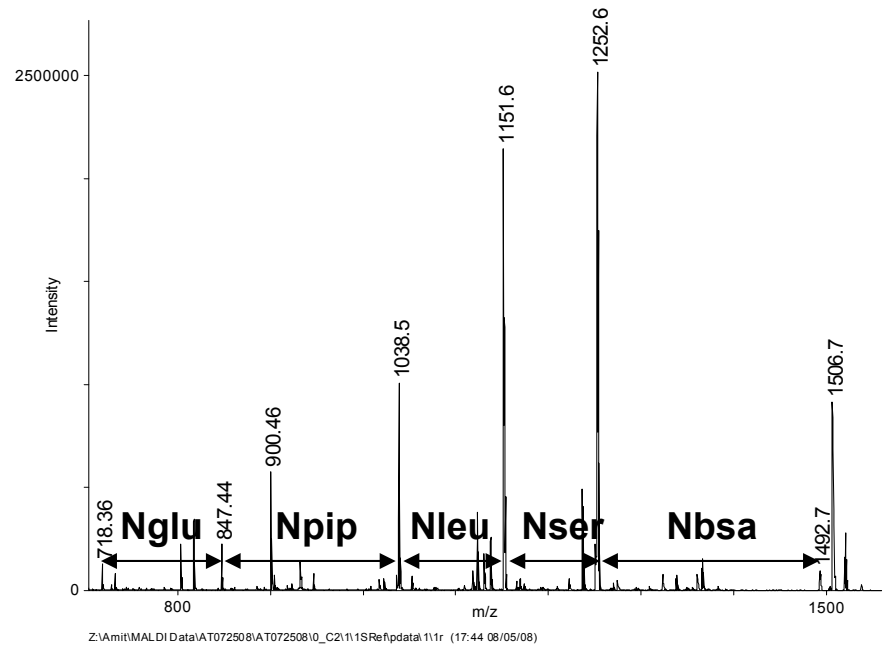
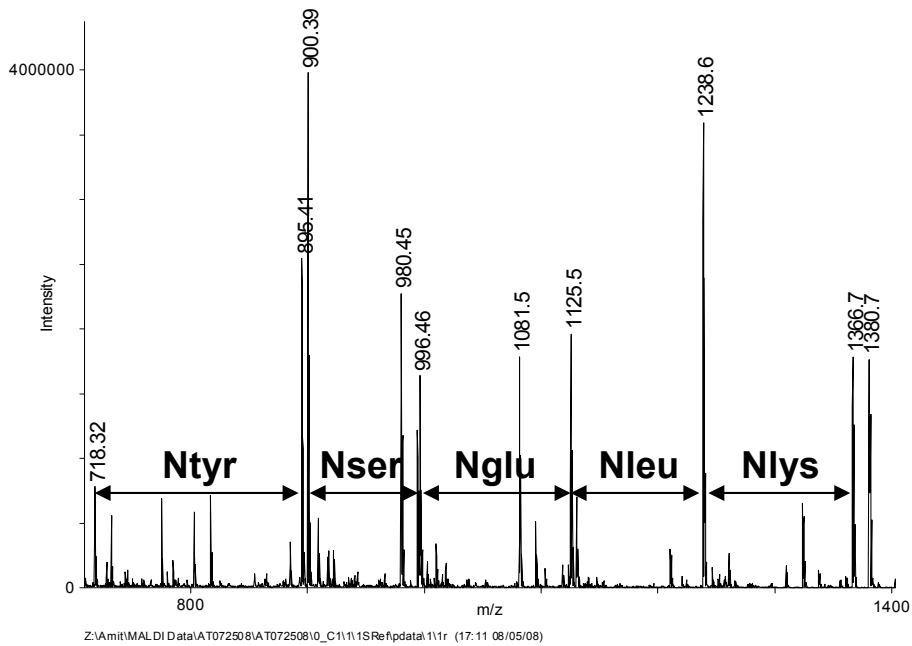


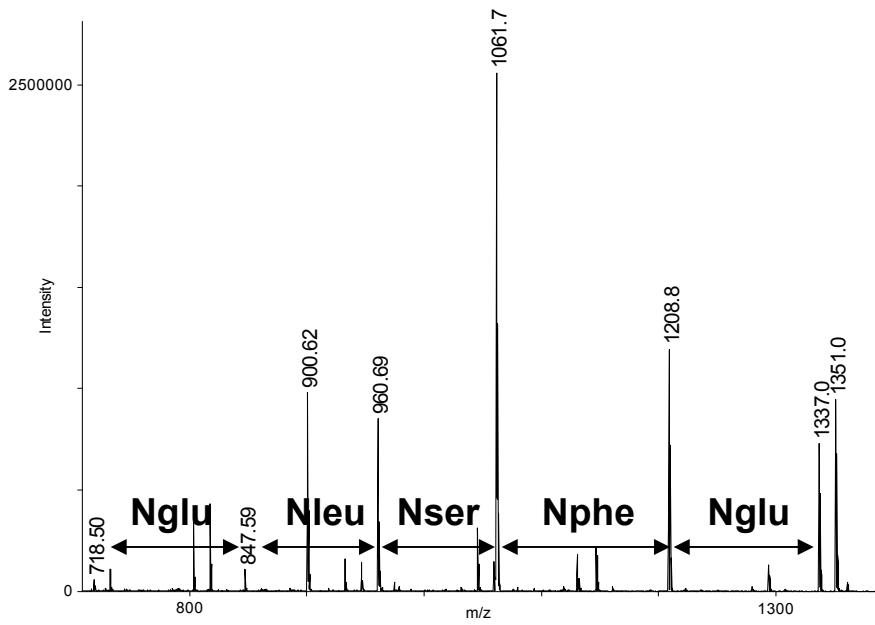
High-Throughput Sequencing of Peptoids and Peptide-Peptoid Hybrids by Partial Edman Degradation and Mass Spectrometry

(Supporting Information)

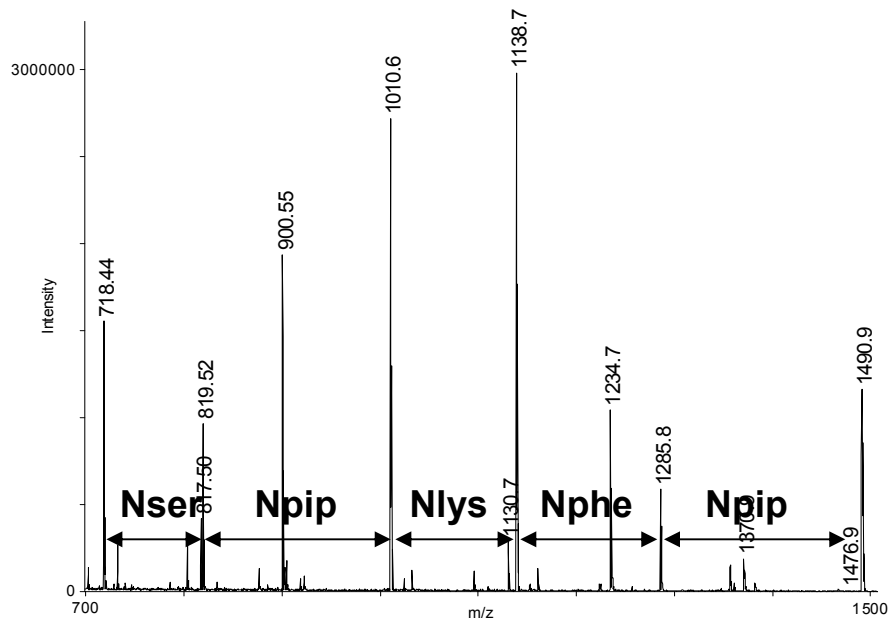
Amit Thakkar, Allison S. Cohen, Michael D. Connolly, Ronald N. Zuckermann, and
Dehua Pei*

Figure S1. MALDI-TOF MS spectra of 20 beads from peptoid library I, XXXXX(Nmeg)₄RM-resin, synthesized on 90- μ m TentaGel S NH₂ resin (Trial #1 in Table 1). PED was performed at 1:3 PITC/Fmoc-Cl ratio.

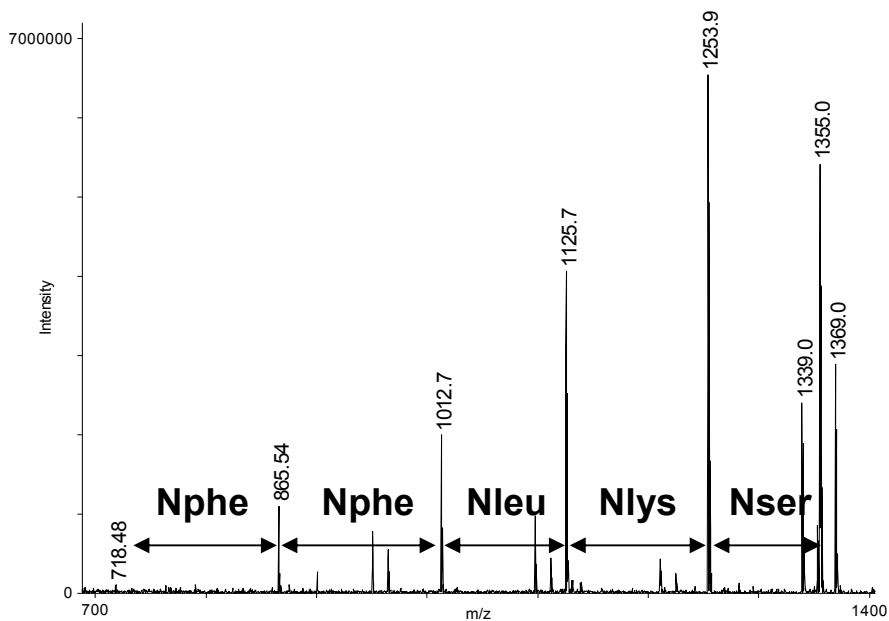




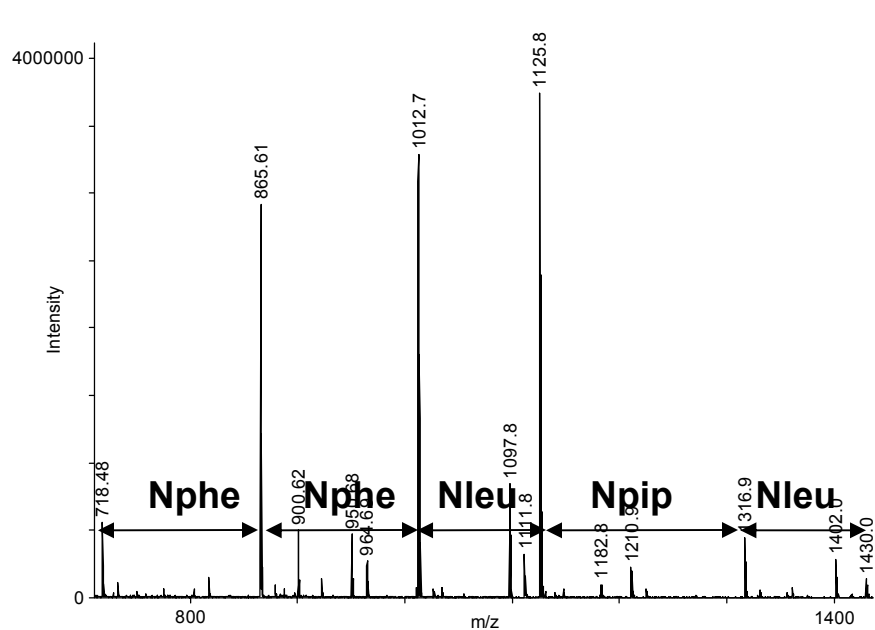
Z:\Amit\MALDI Data\AT072508\AT072508\0_C5\11SRef\data1\11r (18:16 08/05/08)



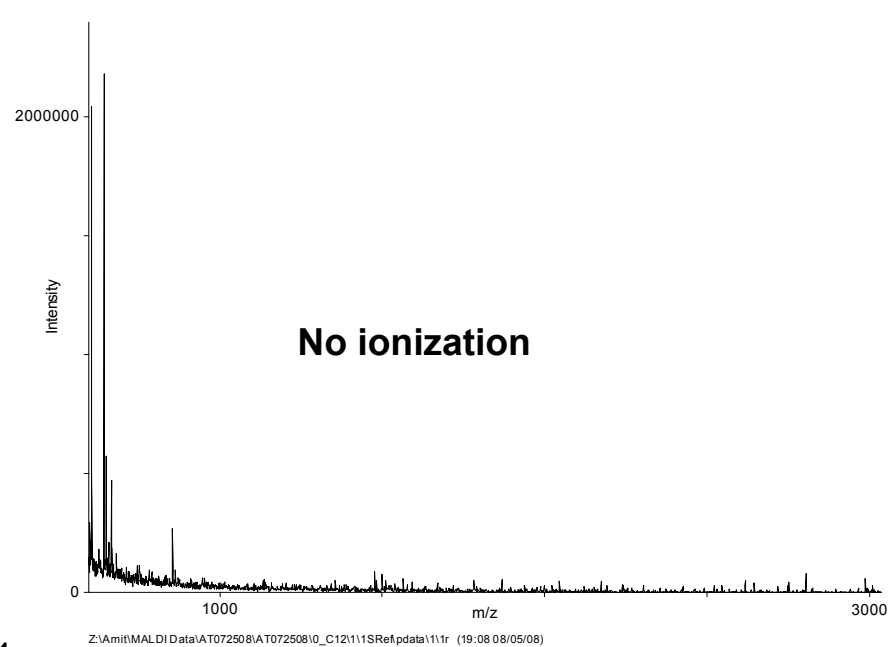
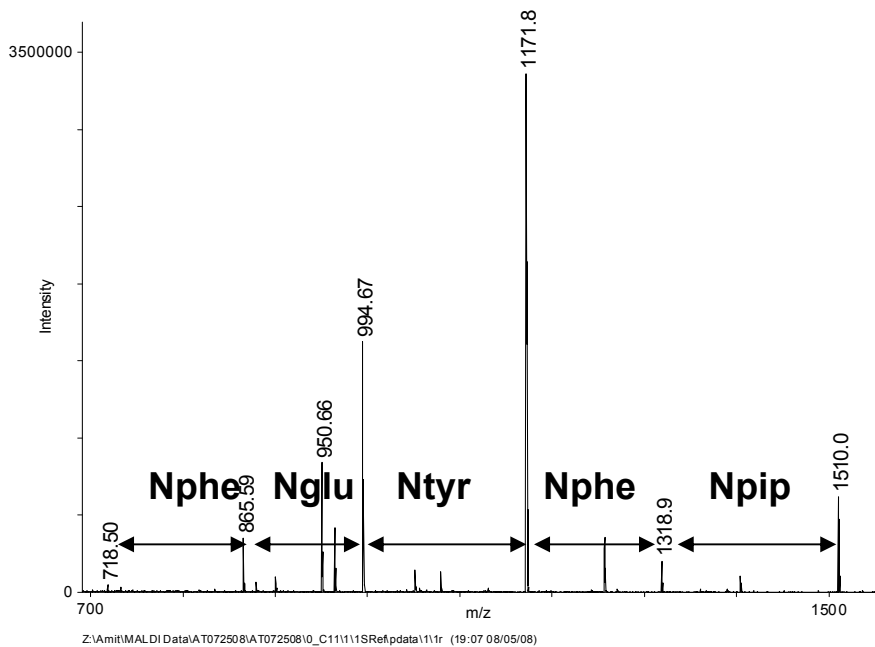
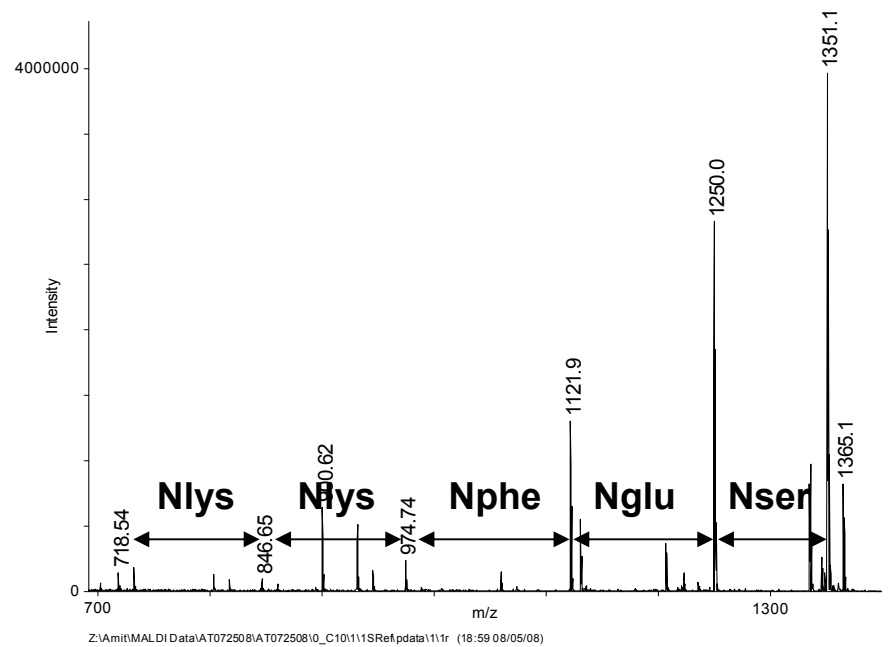
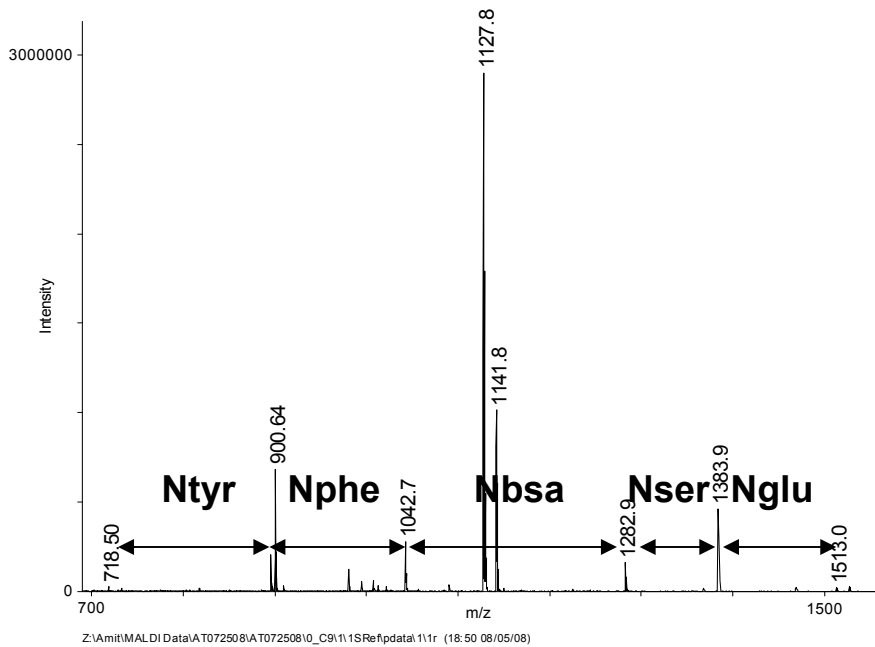
Z:\Amit\MALDI Data\AT072508\AT072508\0_C6\11SRef\data1\11r (18:26 08/05/08)

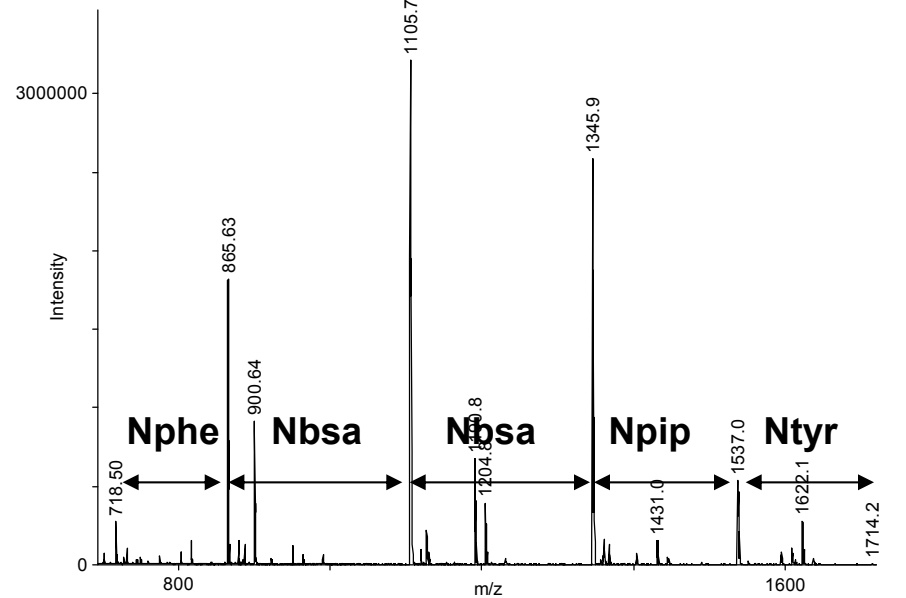
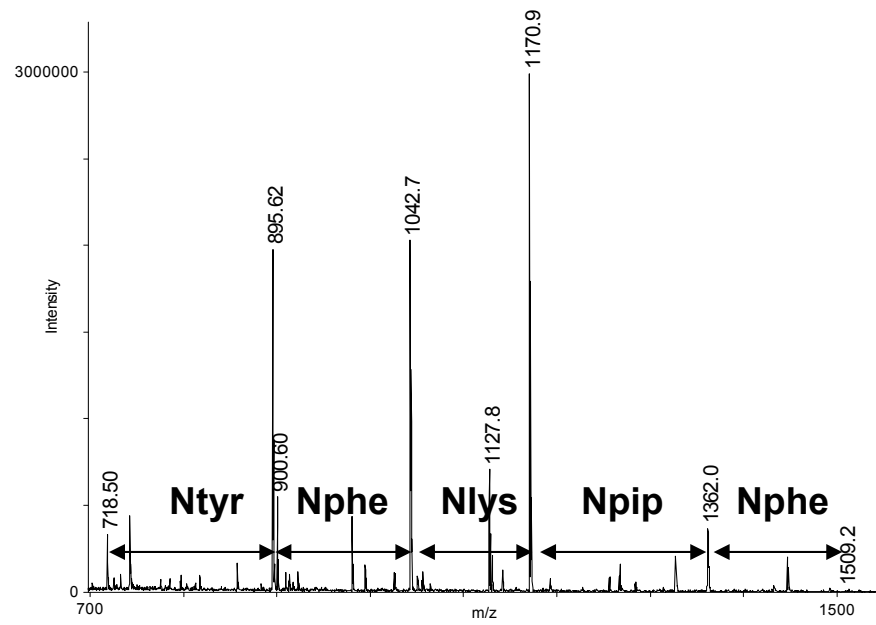
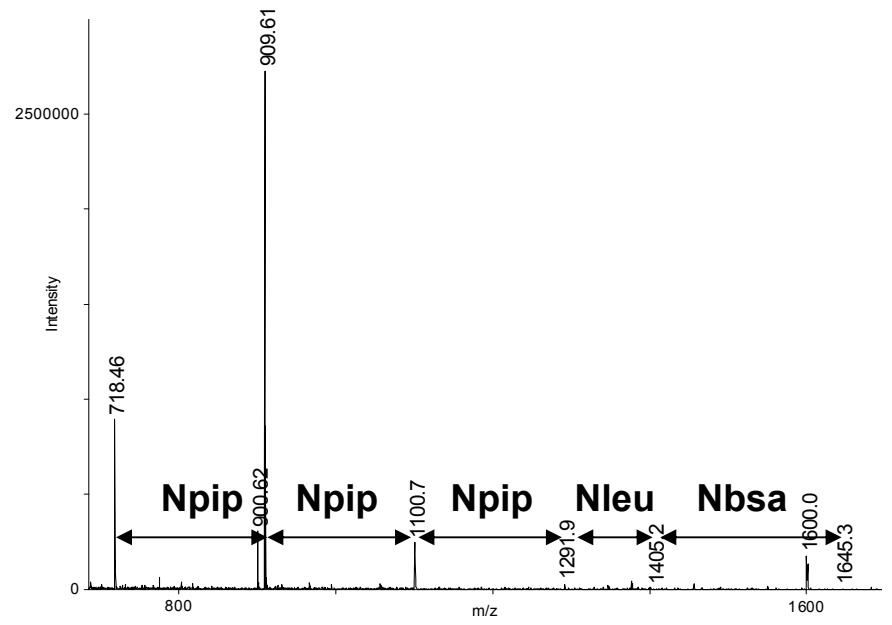
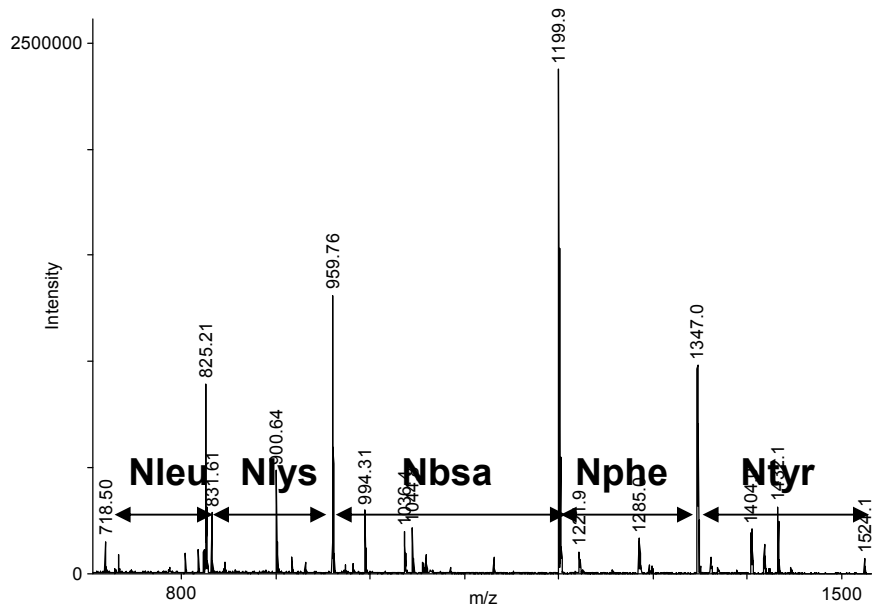


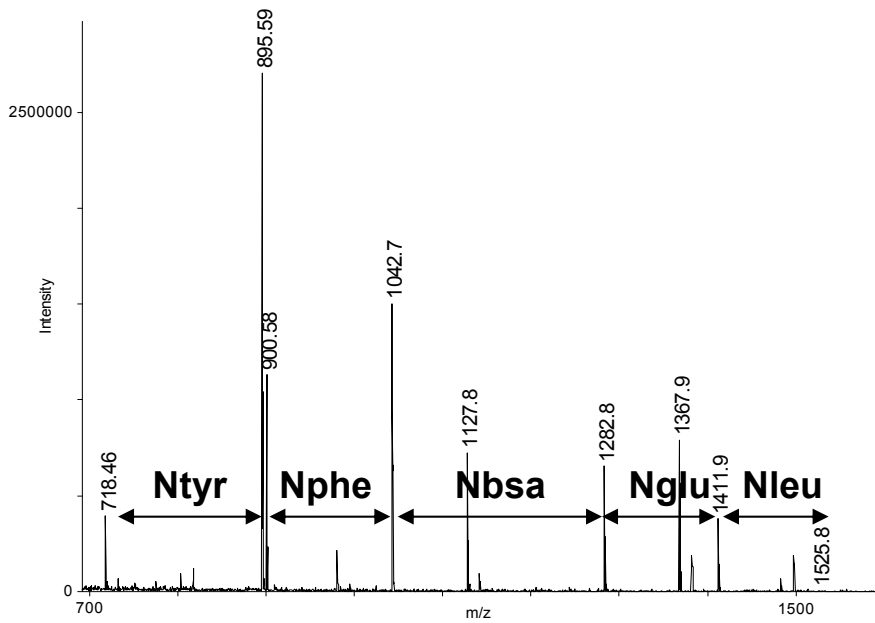
Z:\Amit\MALDI Data\AT072508\AT072508\0_C7\11SRef\data1\11r (18:32 08/05/08)



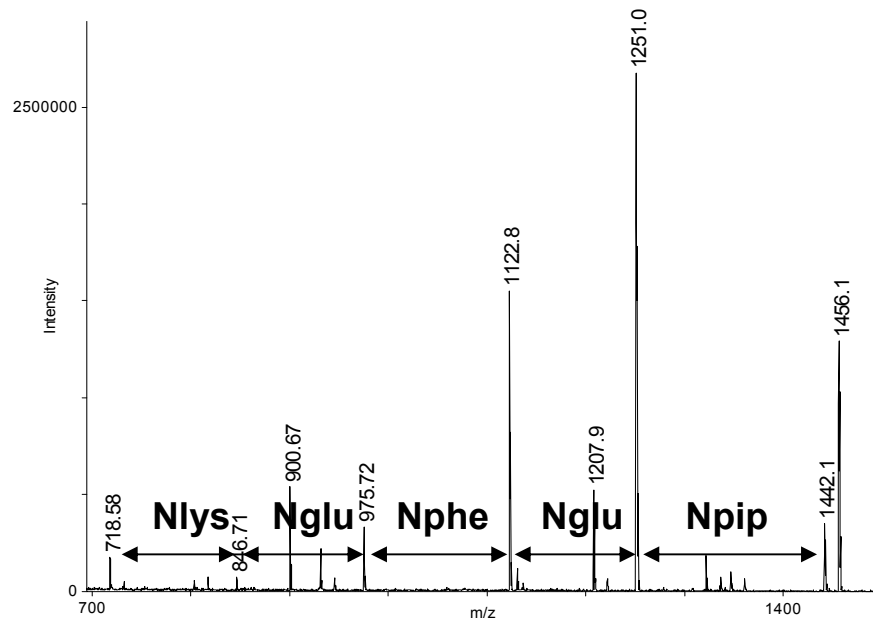
Z:\Amit\MALDI Data\AT072508\AT072508\0_C8\11SRef\data1\11r (19:15 08/17/08)



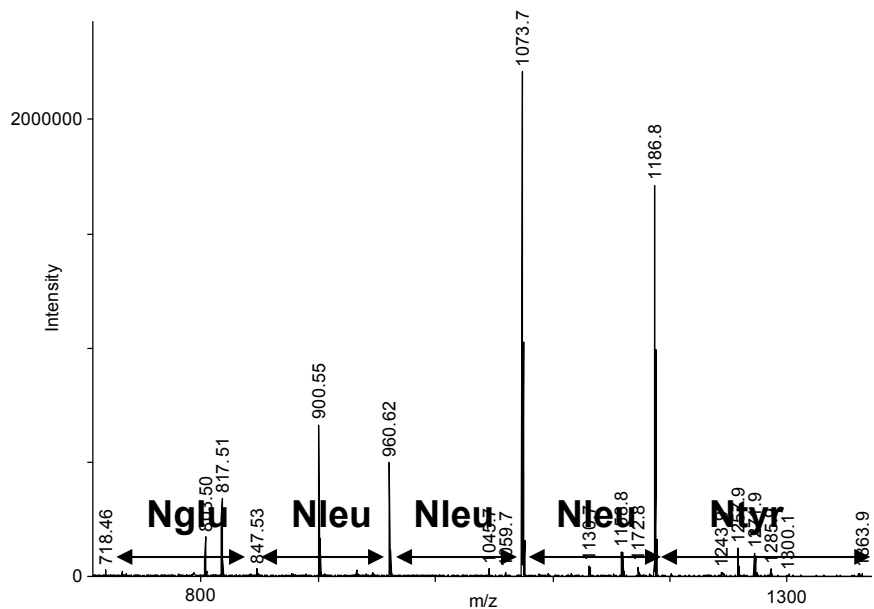




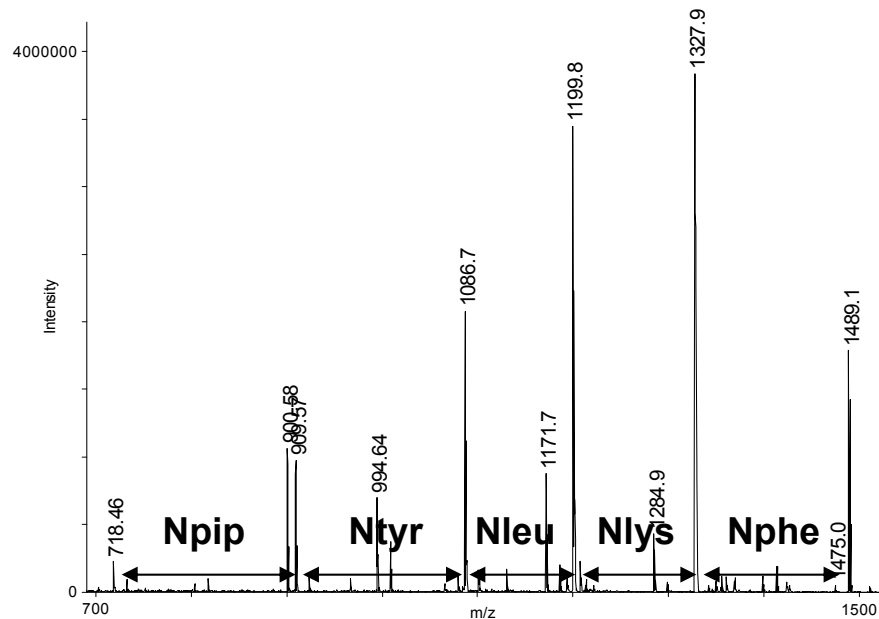
Z:\Amit\MALDI Data\AT072508\AT072508\0_C17\11\1SRRef\data\111r (19:19 08/05/08)



Z:\Amit\MALDI Data\AT072508\AT072508\0_C18\11\1SRRef\data\111r (19:20 08/05/08)



Z:\Amit\MALDI Data\AT072508\AT072508\0_C19\11\1SRRef\data\111r (19:32 08/17/08)



Z:\Amit\MALDI Data\AT072508\AT072508\0_C20\11\1SRRef\data\111r (19:23 08/05/08)

Figure S2. Representative MS spectrum of a known peptoid of the sequence Nphe-Nlys-Nglu-Nser-Nleu-LNBBRM*. Peaks labeled with “a” represent $m/z - 101$ peaks due to incomplete synthetic incorporation of Nser; “b” indicates $m/z + 85$ peaks arising from peptoid synthesis; “c” indicates $m/z + 14$ peaks arising from methylation. Synthesized on 90- μm TentaGel S NH_2 resin. PED was performed at 1:5 PITC/Fmoc-Cl ratio.

