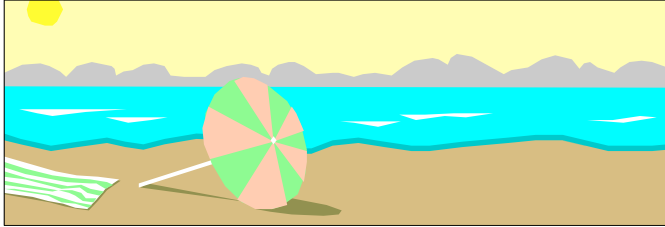


Royal Kahana- Unit 1015  
4365 Honoapiilani Highway  
Lahaina, Maui, HI 96761



*Aloha!*

**LOCATION-** the Royal Kahana Resort is located on the West Side of Maui directly on the sandy beach at Kahana Bay which is about four miles north of Lahaina. The Kaanapali resort area is two miles towards the south and the Kapalua resort area is two miles towards the north.

**UNIT 1015 AMENITIES-** The tenth floor panoramic view from both the living room and bedroom is of the West Channel waters and includes the islands of Molokai and Lanai. The large 1,000 square foot single bedroom unit with lanai is fully furnished in island decor. Up to four guests can be accommodated by using the king bed in the bedroom and the queen sleeper sofa in the living room.

**Kitchen** - fully equipped with a stove, microwave oven, automatic dishwasher, blender, automatic coffee maker, toaster, full size refrigerator, spices and utensils.

**Entertainment** - cable color TV, VCR, and a separate AM/FM/ radio, cassette tape unit, and a audio CD player.

**Staying cool** - The unit is air-conditioned and has a ceiling fan in the dining room and bedroom.

**Clothing/Bedding** - clothes washer, clothes dryer, iron, and ironing board in the unit. Linens, towels, and bedding are found in the large walk through closet.

**Toys** - Near the front door are the boogie boards, beach chairs, mats, ping pong paddles and other sporting equipment

**TENNIS-** There are two lighted courts available for your enjoyment. The courts may be reserved at the front desk. Tennis racquets and balls can be checked out at the front desk.

**SWIMMING-** there is a large heated freshwater pool facing the ocean. The ocean beach, which is within forty feet of the building, is sandy and ideal for saltwater activities.

**PING PONG-** the table is located on the lower level. Ping pong balls and paddles can be checked out at the front desk.

**SHUFFLEBOARD-** Located in the garden area near the pool. The shuffleboard equipment can be checked out at the front desk.

**EXERCISE ROOM-** Located on the lower level. The access key can be checked out at the front desk.

**BARBECUES-** there are several gas barbecues, for your use, and they are located near the poolside party pavilion.

**GROCERIES-** The best pricing is found at the Kahului Costco which is within one mile of the airport and on the road to our unit. Closer to our unit there is a Safeway superstore in Lahaina at The Cannery, a Star Market two miles to the south and a large market two miles to the north at Napili. There is also a local store and gas station directly across the street from the Royal Kahana.

**DIVING AND SNORKELING-** The Maui Dive Shop across the road near McDonalds has a free guide which is very complete and detailed.

**WINDSURFING-** the best locations for wind, safety, and rental equipment are on the North side of the island near the Kahului airport. The windsurfing in front of the Royal Kahana is for those who are familiar with the reefs, tides, and winds of the area.

**GOLF-** there are many excellent golf courses on the island including five-world class courses within two miles of the Royal Kahana. Contact Kapalua or Kaanapali for costs and reservations.

**SHOPPING-** this area of Maui is known for its wealth of shopping experiences including Whalers Village, The Cannery, and the numerous shops throughout Lahaina.

**RESTAURANTS-** There are several within walking distance including a McDonalds (Yes, that's right), Dollies, Eric's Seafood Grotto, Outback Steakhouse, Sands of Kahana, China Boat, and Roy's.

**AIRPORTS-** the major airport (Kahului) is thirty miles away at Kahului and is equipped for jet plane service. The other airport (Kapalua/West Maui) is conveniently located two miles east of the Royal Kahana and offers propeller plane service between all islands. Car rentals and taxi service are available at both airports.

**PAYMENT-** the charge for the rental days is due at least 60 days before arrival. Please send payment to: Sandra Babbitt - 26425 7th Avenue South, Des Moines, WA 98198  
Payment can be either cashier or personal check in USD. The charge will also include a 11.42% State of Hawaii tax. The costs for telephone use will be collected at checkout.

**RESERVATIONS-** please call us directly in Seattle at 800-982-1814.

**WEB ADDRESSES** – <http://www.sunnymaicondo.com/>

For owner contact – [condomom1015@yahoo.com](mailto:condomom1015@yahoo.com)

We hope you enjoy your visit and please let us know if we can assist with your future travel to Maui. Please pass this information to friends and relatives. Your referrals are appreciated.

*Mahalo,*

Sandy & Dave Babbitt