

Printing in Photoshop 5 and 6

Using Custom or Epson Media Profiles Epson Printers – Windows

By Ian Lyons

The main purpose of this essay is to show how to use Custom or Epson created media/paper profiles with Photoshop. Again, it has all been written before, but in this essay my intent is to keep it to the simplest possible level.

Introduction

The driver settings to be discussed below are not printer specific, they should be compatible with just about any Epson Stylus Photo Inkjet printer currently available and also with some from quite a few years back.

Simple questions!

Why do PC users of Epson printers sometimes feel "hard-done-by" and claim that Epson do not provide them with all the tools necessary for a fully colour managed workflow? Maybe it's because the single ICC profile supplied with the PC version of the Epson printer driver is NOT an ICC media (paper) profile. So what is it?

The simple answer!

The single ICC profile supplied with the PC driver will normally have a name such as Epson Stylus Photo 1270, when viewed in the Photoshop Print dialog. However, the name/label of these profiles in Windows Explorer is less obvious, e.g. Ee089_1 or similar. These profiles simply define the optimum colour space for the Epson printer and are associated with the Color Settings, PhotoEnhance and ICM modes. When the driver is set for any of the 3 operating modes mentioned above it needs no additional media profiles, they are built-in.

One VERY important point to be noted is that these colour space profiles are NOT compatible with No Color Adjustment mode. If you choose this mode and try using these colour space profiles the resulting prints will in all likelihood be terrible.

Mac users are more fortunate than the PC user in that Epson does provide ICC media/paper profiles with each printer. These ICC media profiles are of reasonable quality and can after a simple modification be used by the PC user with either Photoshop 5 or 6. You can download versions for a few Epson Stylus Photo models by clicking the hotlinks that follow:

Note: ICM and ICC profiles are the same; so don't get worried if you see the terms being used interchangeably.

Epson ICC Media Profile designations

- SP2000P AMP - Archival Matt, SP2000 GP-PW - Glossy Paper Photo Weight, SP2000 PLP - Premium Lustre Paper, SP2000 RC - Premium Semigloss Photo Paper, SP2000 WP-RW - Watercolor Paper Radiant White.

- SP1270, SP890 or SP1290 RC - Premium Gloss Photo Paper, SP1270, SP890 or SP1290 MP-H - Heavy Weight Matt, SP1200, SP750, SP1270, SP890 or SP1290 GF - Glossy Film
- SP1200, SP750, SP1270, SP890 or SP1290 PP - Photo Paper, SP1200, SP750, SP1270, SP890 or SP1290 PQP - Photo Quality Paper

You will only find the profiles appropriate for your printer model in the download. Epson created these profiles and I make no claims as to quality of the final prints. It is worth noting that Mac users seem perfectly happy with the results they obtain, hopefully PC users will be similarly pleased. Please be aware that the above profiles will be a poor substitute for custom created ICC profiles.

Profile Locations

Windows 95/98/98SE/Me - copy the profiles to the windows/system/color folder
 Windows 2000 - copy the profiles to the system32/spool/drivers/color folder

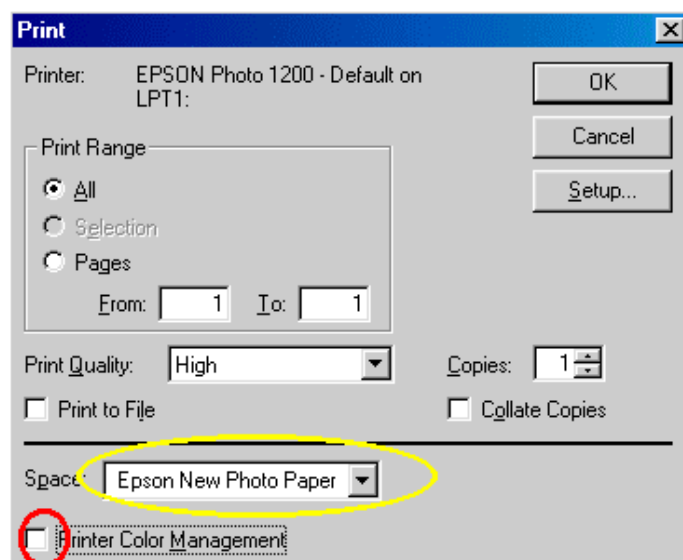
Getting an acceptable Print

For best results when using an Epson Stylus Photo Printer with Photoshop we should really have it correctly configured and the monitor properly characterised and calibrated. Adobe provides Adobe Gamma for this purpose and I have produced two comprehensive essays describing how Photoshop 5 and 6 can be configured along with guidance on characterising and calibrating the monitor. See Photoshop 5 Colour Settings or Photoshop 6 Colour Setup tutorials for more details.

Photoshop 5 - Making the Print

The steps involved in making the print are pretty straightforward

- Select Print from the Photoshop File menu and make sure the appropriate ICC profile for your media is selected in the Space pop-up menu.
- The "**Printer Color Management**" checkbox **MUST** remain **Unchecked**.



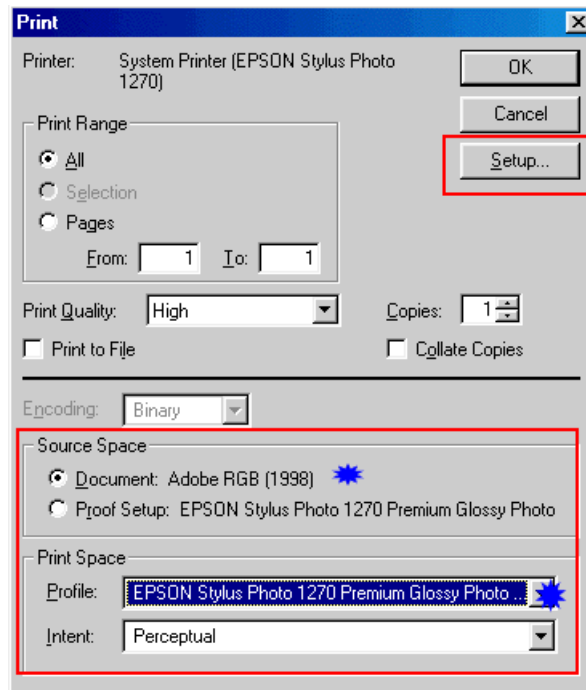
Photoshop 5 Print Dialog

- Now Select the **Setup** button (the remaining steps are shown beginning the bottom of page 3)

Photoshop 6 - Making the print

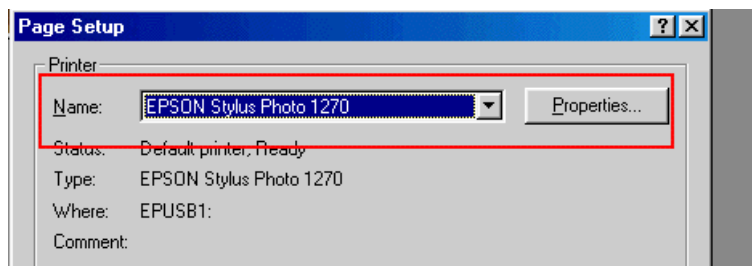
The Photoshop 6 Print dialog is slightly more complex looking than that of Photoshop 5, but isn't really any more difficult to configure. The basic steps are as follows.

- Select **Print** from the Photoshop File menu
- Select the **Document** radio button
- Select the appropriate ICC media profile for your printer in the **Print Space "Profile"** pop-up menu
- Intent should normally be set for **Perceptual** (Relative Colorimetric is also worth a try).
- Select the **Setup** button



Photoshop 6 Print Dialog

The remaining steps are common to Photoshop Versions 5 and 6. Having pressed the **Setup** button the **Page Setup** dialog should appear.

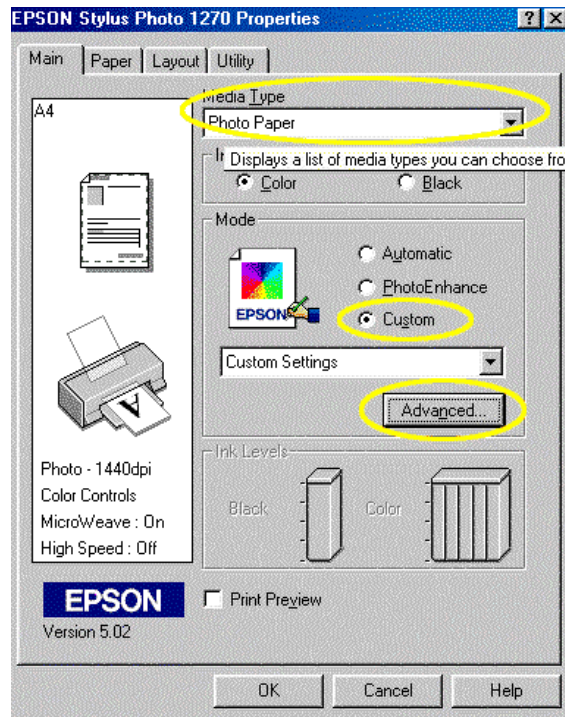


Section of Photoshop Page Setup Dialog

- Select the **Properties** button.

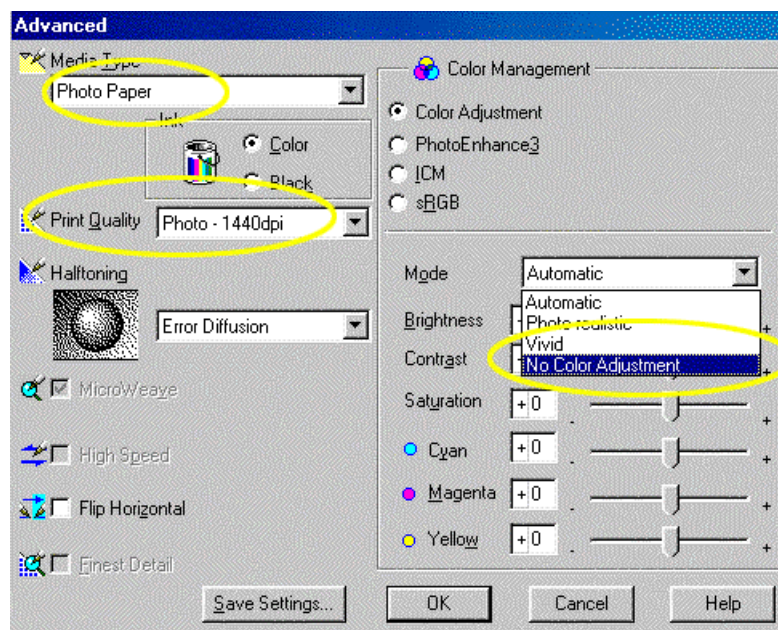
Note: that if you have more than one printer installed, it is important to select the appropriate model in the Printer Name popup.

The Epson Stylus Photo Printer main Dialog should appear. The actual dialog appearance will be slightly different for each printer model although printers within the same family tend to be fairly consistent. I have included screenshots for both the Epson 750/1200 and 870/890/1270/1280/1290 below so that you might recognise these differences.

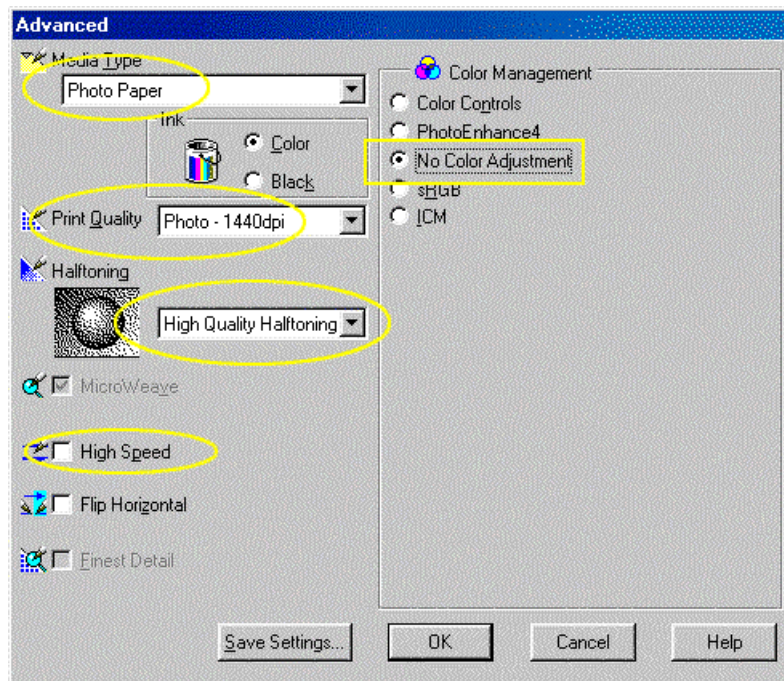


Epson Printer Driver - Main Dialog

- Select Custom button followed by the Advanced button, when it appears.
- Ensure that the sliders for colour, brightness, contrast and saturation are ALL at their default "0" position.
- Don't be tempted to use the Epson **Print Preview** screen since the results will look terrible and cause you no end of confusion and frustration. The Epson **Print Preview** is NOT compatible with ICC media profile.



Epson 750/1200 Printer (v4.5 drivers) - Advanced settings



Epson 870/890/1270/1280/1290 Printer (v5.x drivers) - Advanced settings

- Choose your media type (it **MUST** be the same as the profile you selected in Photoshop).
- Choose your **Print Quality** - best choice is Photo 1440
- High Speed should be deselected
- Color Management **MUST** be set to **No Color Adjustment**
- Click the **OK** button and return to Photoshop to make the print.

If you created or purchased custom ICC profiles for your Epson printer then one or other of the configurations described above will apply, which depends upon your version of Photoshop.

One last point, just as the Epson colour space profile described at the beginning should not be used with **No Color Adjustment** mode it is the case that ICC media profiles should **NOT** be used in any other mode but **No Color Adjustment**. Using any other driver mode with such profiles will produce prints that look fluorescent pink/red, so be warned and stick with the settings described, and **PLEASE** don't be tempted to use the Epson **Print Preview!**