



## Argon User Manual

Welcome to the Argon User Manual. This is intended as a brief guide to the Argon theme, and outlines the various options the theme contains, as well as detailing how to use the mootools slimbox plug-in which is built into the theme itself.

Argon is a theme we worked hard on, as we did the whole element series, and we hope that this is reflected in your experience of using it. We have done our utmost to ensure that this theme reaches you bug free and fully compatible with whatever browser people choose to view it on (however ridiculous that choice might be) and we have tested it to that end. If however a bug does slip through then you can be guaranteed that we'll fix it just as fast as we can, and update you accordingly.

We believe that the RapidWeaver community is one built around a genuine desire to make the web a better experience for both the end user, and you, the people creating places for them to go. As such we pride ourselves on living up to a standard of quality which means that our products are as good as we can make them. We wish you well in whatever you aim to do with this product (just as long as it isn't a homage to Internet Explorer), and we'd love to know where our themes end up, so get in touch and let us know where your site is!

Happy Weaving!

### Theme Variations:

- **Sidebar:** the sidebar can be positioned on the left, the right or hidden entirely.
- **Font Style:** the specific font for every page can be specified. The included options are Geneva, Arial, Hoeffler Text (please note that this is not a font found on all computer systems and if the end user of the site does not have it then the font will default back to the nearest Serif typeface) Times New Roman, Lucida Grande, Serif (a more generic range of serif typefaces) and Sans-Serif (a more generic range of sans-serif typefaces).
- **Font Size:** a choice of px or em font sizes (px specifies the size in absolute terms, pixels, so that the site will appear the same on every computer and is more consistent, em is a relative size and end users can make the text bigger or smaller. This is better for users who may need to enlarge text to read it, but can make your page display in ways which you did not intend). The options include 0.8em, 0.9em 1.0em, 10px, 11px, and 12px.

- **Text Colour:** the default theme text colouring is in our opinion the best looking, but you may wish to change this and so we have included a white option to make things a little more vivid. We have also included grey and very dark grey options which we do not really intent to be used in the main page, but rather were included just to make the text more visible on exceptions such as the kwix plugin.
- **Background On/Off:** the background image can be turned on or off to add that little bit of flexibility should you prefer a more uncluttered page style.
- **Header Styles:** we have included 3 header styles, a basic option, a glossy option and a striped option. It's all a matter of taste you see.
- **Header Image:** you also have the choice of turning off the header graphic, again if you want a slightly more uncluttered feel to your page.
- **Header Alignment:** Some folks just like to be different. Go ahead, knock yourself out!

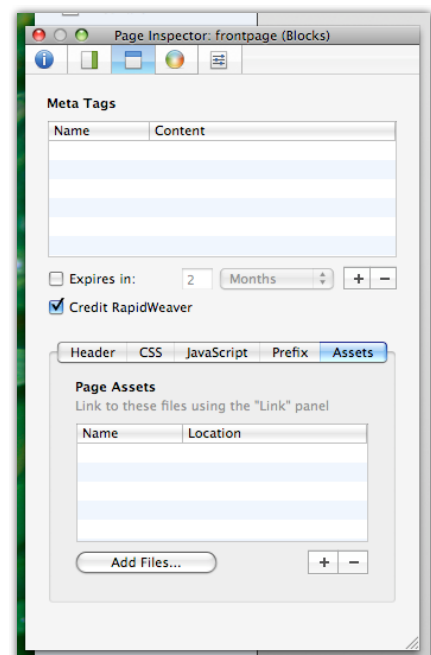
*That about does it for the variations. On a final note, if you are including a logo in the header, make sure it is big enough to displace both the title and the slogan, as if it isn't they will line up differently and it will just spoil everything. Don't say we didn't warn you.*

## Mootools Slimbox Plug-in

We included in the element series a plug-in called slimbox from mootools. It's a neat little bit of Java which displays you images in a cool box, fading down the background. Here's how to use it:

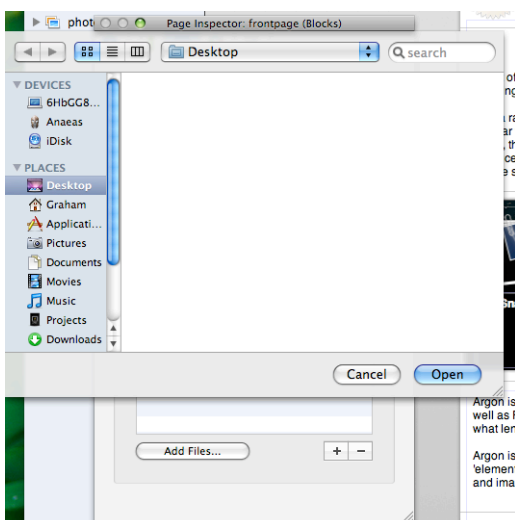
### Step 1

Include an asset. In the Inspector, click the page header tab, and then the asset section, as shown on the right.



### Step 2

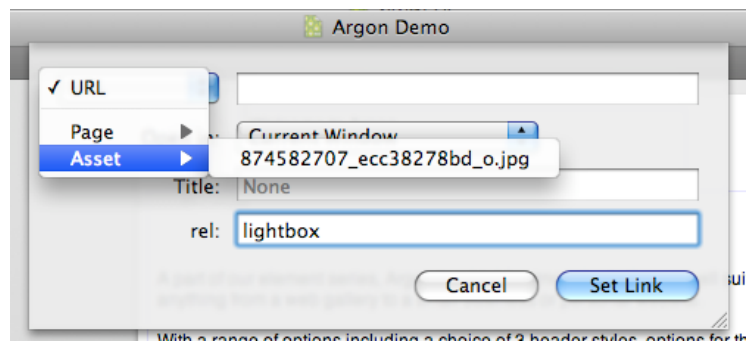
Click on the Add Files button and guess what...add some files! Add anything you might want to link to, but beware, this gets uploaded to your site, and if it's a big file it will take a while to upload, and it will take a while to load when anyone views it. We recommend keeping file sizes as small as possible!



### Step 3

Lastly, select the asset you wish to link to, and in the rel: field, simply type lightbox as in the diagram.

And that's it! We've done the rest for you. Hear that? That's the sound of people being quietly impressed by your site.



For the original Mootools documentation or for any other info, see their website: <http://mootools.net/> or the digitalia website here: <http://www.digitalia.be/software/slimbox>.

That's all from us.