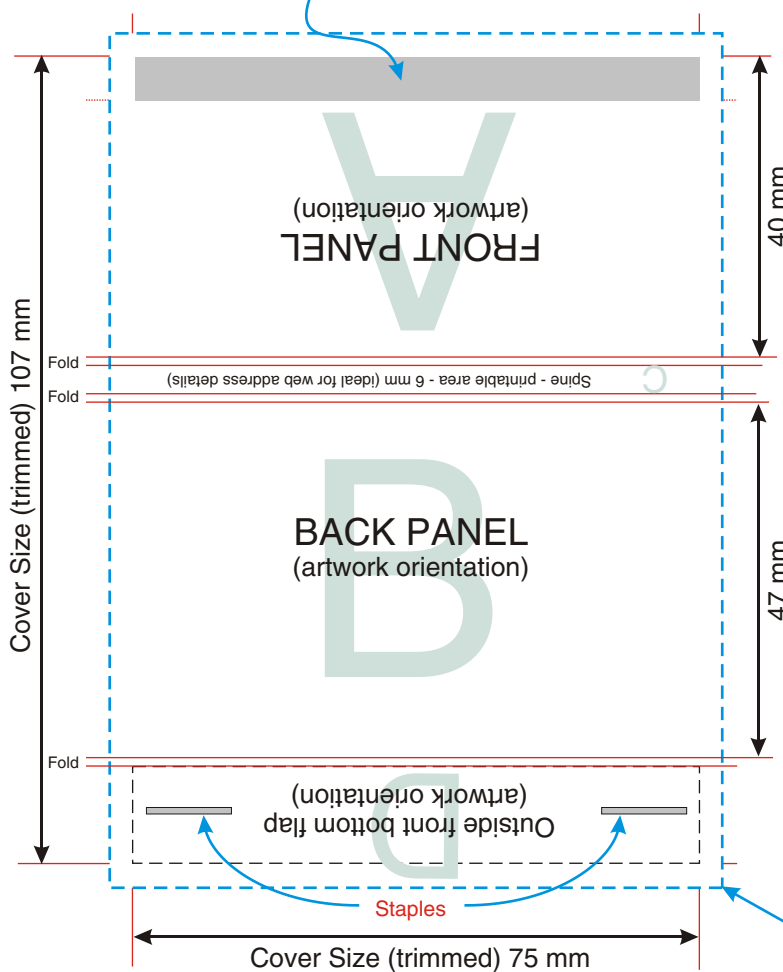


# ARTWORK SPECIFICATION SHEET

## FOUR COLOUR PROCESS TO OUTSIDE

Ensure no important information appears in this area as it tucks in under front bottom flap (allow 5-6 mm)



## ONE COLOUR PRINT TO INSIDE

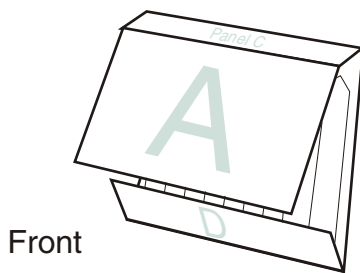
(sample instruction shown below)



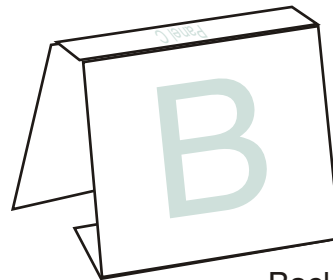
- Choose a suitable container with drainage holes.
- Fill with seed raising compost and firm down gently.
- Water generously with fine spray and leave for 30 minutes to allow water to soak into the compost.
- Break off each seedstick carefully and push it point first into the compost up to the printed depth line.
- When seedlings emerge leave the stick in position and allow the strongest plant to grow on.

Print area : F

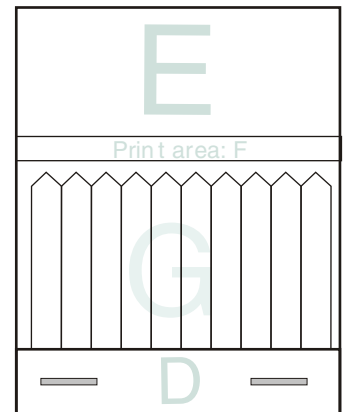
Additional print area - one colour only  
(NOTE: this area will be behind seedsticks)



Front



Back



Allow for staples on the front and back in your designs

## Artwork requirements/specifications

Art should be supplied in either CMYK format or with PMS colours specified for spot jobs. If using Illustrator, fonts should be converted to outlines or curves, otherwise all fonts should be supplied on a disk.

Editable versions of all files should be supplied, linked and placed images should also be provided. Photoshop TIFF or EPS files should be a minimum of 300 dpi.

Mac format is preferred but PC is acceptable. 3mm bleed required.

Software – Illustrator 10, Photoshop 7.0 and Quark Xpress 4.0

Proof will be emailed to you for your confirmation for you to sign off prior to print production.

No responsibility will be accepted for errors or changes once this artwork has been signed off.

If you require a chemical proof mailed to you to sign off on, they are available at \$100.00 per proof.

All changes will be charged at cost.