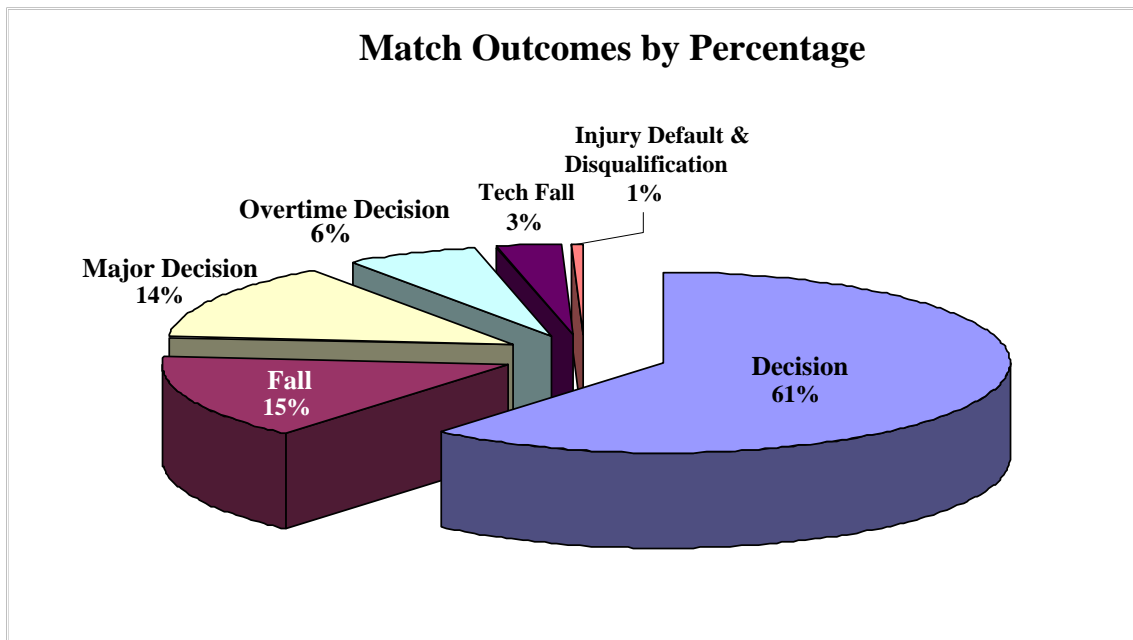


SCORING PATTERNS IN HIGH SCHOOL WRESTLING

What are the trends in scoring in high school wrestling? What is an “average” score? What percentage of matches end in a fall? How often is the wrestler who gets the first takedown, the winner of the bout? What is the percentage of matches going into overtime? I am in the middle of an analysis of high school wrestling that includes a breakdown of the scoring. I obtained the bout sheets from the Illinois Individual State Championships and entered them into an excel database for analysis. So far, I have looked at all of the championship bouts from the larger of the two classes – AA. Illinois is a strong wrestling state with a rich tradition. The earliest dual meet on record dates back to 1926. The Illinois State Tournament started in 1937, and until 1983, the state team champion was determined from the individual state finals tournament. Since that time a dual meet tournament winner has been crowned the state champion. This of course, can have an impact on the results obtained, since there is not the same incentive to go for the extra points for a fall or a major decision. Despite this limitation, the following data should be quite representative of high level high school wrestling.

The scoring from 322 bouts was broken down and yielded the following information.

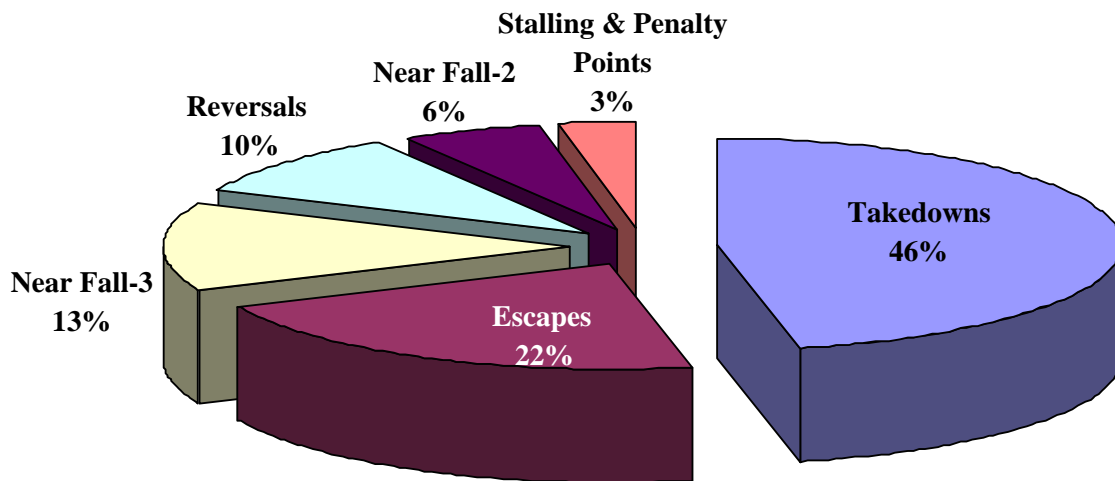


Match Outcome	#	%
Decisions (regulation)	198	61%
Falls	49	15%
Major Decisions	44	14%
Overtime Decisions	20	6%
Tech Falls	9	3%
Injury Default	1	-
Disqualification	1	-

Of the 20 overtime matches, 15 ended with a takedown in the first overtime period. In the remaining five bouts that moved to the 30 second tiebreaker, all of the wrestlers who had the choice of starting position, chose down; of these matches, 3 escaped, 1 gained a reversal, and one wrestler rode for the win.

Looking at the bouts broken down by the various types of scores is shown in the following table.

Distribution of Total Match Points



Type of Score	Percentage of Total Points
Takedowns	47%
Reversals	9.7%
Escapes	22%
Near Fall-2	5.7%
Near Fall-3	13.5%
Stalling Points	2%
Penalty Points	1%
Cautions	Only 4 for .01%

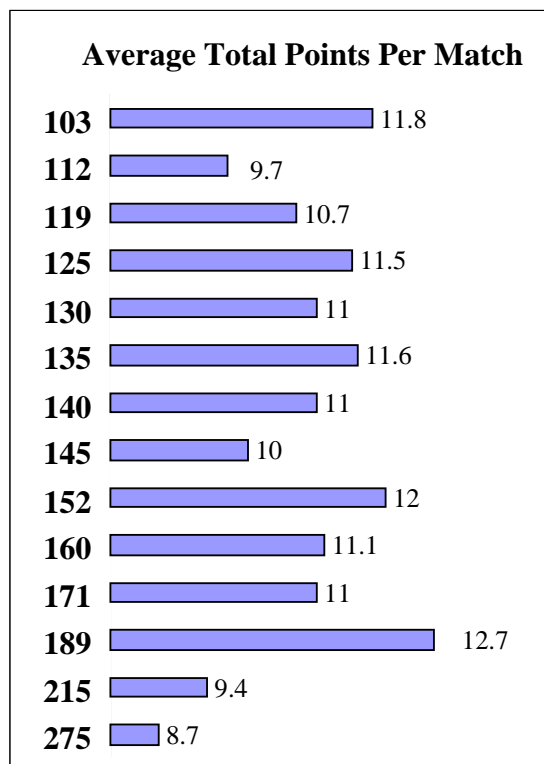
The importance of takedowns is obvious. One does not see the variety of rolls and other reversals from past generations. Near fall points combine for just under 20% of all points. There were 174 warnings for stalling, with the majority given in the 3rd period. 42 of 60 points for stalling were given in the 3rd period. Some coaches feel that officials penalize a wrestler in the 3rd period for what was allowed in the earlier periods. While not listed on the chart, trainers and administrators should be aware that blood time was taken in 15% of the bouts and injury time in 17% of the bouts. A good training staff and blood cleanup crew are necessary for the smooth conduct of all wrestling competitions.

Most coaches stress the importance of the first takedown. The only published data I could find on this is an article written in the '70's by Richard Maertz in *The Athletic Journal*. He summarized his master's thesis in this article on initial takedown and match outcome and found that 76% of matches were won by wrestlers who got the first takedown. I was interested to see if this percentage has grown since this research was done, especially in light of the increased emphasis on takedowns since that time. While I was expecting a higher number, my data from Illinois showed a 79% win rate for the winner of the first takedown.

Scoring by period in regulation gave the following results: 1st period -30% of match points; 2nd period – 35% of scoring; and 3rd period – 35%. This probably reflects a stronger defense while the wrestlers are fresh.

The average score of all matches was approximately an 8-3 result.

Scoring by weight class is shown in the following chart. It lists the average total points for the matches in each weight class.



The 189 pound class leads the way with 12.7 points per match. I was a bit surprised to see this result, along with the lower average of the 112 pound class, as the lower weight classes are usually associated with high scoring bouts.

Scoring by Champions Scoring analysis done for FILA World Championships by Dr. Harold Tunnemann of the Institute of Applied Training in Germany, uses a scoring

coefficient which is based on points scored, minus points given up, divided by the elapsed time. I applied this to the champion's performances for each weight class and came up with the following results.

Weight Class	Scoring Coefficient
103	.73
112	1.29
119	1.13
125	.77
130	1.10
135	1.18
140	.79
145	.63
152	1.14
160	.94
171	.85
189	.79
215	2.24
275	.71

The 2.24 scoring coefficient by the 215 pound champion indicates a dominating performance which included scoring 50 points in 4 matches, while giving up only 7 points. Another performance of note is the 1.10 value in the 130 pound class, where a tremendously stable defense did not yield a single point in four matches!

While I feel that these results are fairly representative of our sport, more work can be done. I am going to look at the bout sheets from the final rounds of the state dual meet series to see if there are substantial differences. We can do these studies in other parts of the country to see how they compare-maybe using the results from the Senior Folkstyle Nationals. By establishing some baselines, we can see the impact of rules changes and follow the evolution of our sport. This is fertile ground for some of you coaches out there who are looking for thesis topics for advanced degrees. Charting the use of the actual techniques used in scoring points is another needed line of research.