

Friends of Palomar Observatory  
P.O. Box 200  
Palomar Mountain, CA 92060-0200



# The Big Eye



The Newsletter of the Friends of Palomar Observatory Vol. 1, No. 2

## Eight or Ten?

The question that many people have been asking lately is "How many planets are in the solar system?" For the last 75 years the answer has been nine. Last summer Caltech's Mike Brown and his partners announced the discovery, made using Palomar's 48-inch Samuel Oschin Telescope, of what may be the solar system's 10th planet. (Some of you may remember Mike's talk for the Friends last October.) Since then astronomers have learned many things about the new object, including that it is 25 percent larger than Pluto and that it sports a moon. One thing that the public has learned is that astronomers still haven't decided what a planet is.

The notion that astronomers don't know what is or isn't a planet seems a little strange. The ancients discovered the planets Mercury, Venus, Mars, Jupiter and Saturn in the skies by noticing that their positions seemed to wander about relative to the stars. The very word *planet* comes

*Continued on page 3*

## The Little Telescope that Could

by Francis O'Donovan

A new visitor to the Palomar Observatory would be forgiven for paying scant attention to the small hut-like structure pictured at lower left. A few minutes walk from the gigantic dome of the five-meter (200-inch) Hale Telescope, the clamshell enclosure houses a small telescope named Sleuth. The diameter of Sleuth's camera lens is relatively small, only 10 cm. The telescope itself would blend in well in a store for the astronomy enthusiast. And yet, this inconspicuous telescope is contributing to our understanding of planetary systems similar to our solar system, and how these systems formed. In the shadow of the "Big Eye," this is the Little Telescope That Could.

The planets in our own solar system have intrigued humanity throughout history. In particular, we strove for the ability to predict the motion of these "wanderers" in the night sky. Great minds provided keen insights into the workings of the solar system. These included Copernicus' bold statements that displaced Earth from the center of the universe, and Newton's theory of gravity that explained why the planets perform their dance around the sun. We now probe our solar system and beyond for clues as to how a planetary system forms and what the composition of a planet may be. Since the discovery 10 years ago of the first planets outside the solar system (called exoplanets), we have identified about 160 of these bodies. We hope to discover other "Earths"—a holy grail in astronomy.

Rather than trying to observe a planet itself directly, it is easier to discover an exoplanet by observing the effect of the planet on the host

*Continued on page 2*

## Friends of Palomar Observatory Annual Membership Application

**G** Student/Senior Citizen Member \$30   **G** Individual Member \$45   **G** Family Membership \$75

Name \_\_\_\_\_

Address \_\_\_\_\_

City \_\_\_\_\_ State \_\_\_\_ Zip \_\_\_\_\_

Phone \_\_\_\_\_

Email \_\_\_\_\_

Check   Visa   Mastercard   (circle one)

Credit Card # \_\_\_\_\_

Expiration Date \_\_\_\_\_

Signature \_\_\_\_\_

For questions call (760) 742-2111, e-mail [friendsofpalomar@astro.caltech.edu](mailto:friendsofpalomar@astro.caltech.edu), or visit [www.friendsofpalomarobservatory.org](http://www.friendsofpalomarobservatory.org)



*Sleuth - the smallest telescope at the Palomar Observatory .*

*Little Telescope, continued from page 1*

star. As a gas giant like Jupiter orbits a star, the star may appear to "wobble" by a certain amount in the night sky. If we observe such a wobbling star, we can estimate the mass of the companion and deduce that a planet may be present. The majority of known exoplanets were identified in this way. These discoveries included a surprise finding: gas giants can be found closer to stars than Mercury is to the sun! This proximity also means that it is likely that we can observe the planet crossing in front of or "transiting" the star, as will be seen during the transit of Mercury later this year. If this happens, the star appears to dim for a few hours. Because of the relative diameters of a star like the Sun and a Jupiter-like planet, this dip in the brightness (about one percent) of the star could be detected even by a small telescope (if you were careful with how you measured this brightness). In 1999, the first transiting exoplanet HD 209458 b was discovered using the 10-cm STARE (STellar Astrophysics & Research on Exoplanets) telescope. Eight other transiting exoplanets are now known.

Sleuth (shown opposite) is a small-aperture telescope, similar to that used to discover HD 290458 b. Its 10-cm camera lens has a large square field of view on the night sky, about six degrees to a side. (The diameter of the moon on the sky is about half a degree.) The construction of the telescope by Professor David Charbonneau (currently at the Center for Astronomy at Harvard University) was completed in 2003. Since then, Sleuth has observed a new patch of sky throughout each night every two to three months. At the end of this observing run, the brightness of each of the thousands of stars is studied for signs of a transit dip. Any candidates must then be confirmed by observing them with various instruments on larger telescopes before any announcement can be made with certainty. Ultimately, the mass of the planet must be measured from the wobble of the host star. In the case of a transiting planet, the estimate of the mass of the planet from the wobble of the star is very close to the actual mass, so we can confirm the planetary mass of the candidate.

Despite its location in sunny Southern California, Palomar Mountain can be a cold, windy experience for observers at night, especially during winter. And without the shelter available in the larger

domes, regularly observing in Sleuth's clamshell enclosure requires passion, discipline, and lots of layered clothing! Thankfully, the frostbitten fingertips of graduate students need not be sacrificed in the name of science. Sleuth is an automated telescope, capable of observing target areas of the night sky without much human supervision. All the required actions are scripted in advance, and a computer running this script is placed



in charge of the telescope. The observer can then get a good night's sleep and receive the data in the morning. The automated nature of this procedure allows for remote observing, so the observer need not even be on the mountain. In this way, Sleuth is controlled from the California Institute of Technology in Pasadena, and can observe each night, weather permitting.

Unfortunately, the weather on the mountain does not always cooperate with our plans. Fortunately, Sleuth is part of an international network of three telescopes, the Transatlantic Exoplanet Survey (TrES, the Spanish

*Continued on page 3*

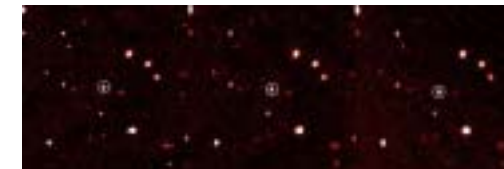
*Eight or Ten continued from page 1*

comes from a Greek word that means "wanderer." Earth was added to the planetary roll call once the nature of the solar system was worked out and we realized that all the planets orbit our sun. The worlds of the outer solar system were not discovered until well after the invention of the telescope. Uranus was found in 1781 and Neptune in 1846. After an extensive search for a suspected ninth planet, the Lowell Observatory's Clyde Tombaugh first identified Pluto in 1930. Over the decades we have learned a lot about Pluto. For instance, that it has moons and that it is much smaller than it was first thought to be.

In the 1990s astronomers began to discover a population of small, icy objects in the outer solar system beyond the orbit of Neptune. The discovery of these objects, in what is now called the Kuiper Belt, caused Pluto's planetary status to be questioned. Some astronomers preferred to keep referring to Pluto as a planet, called it a Kuiper Belt object and others included it in both categories. The easy way out was to call Pluto a planet *and* the king of the Kuiper Belt.

Mike Brown's discovery of the new object, currently known as 2003UB313 has thrown the question back into the headlines. Is 2003UB313 a planet? Should Pluto be demoted? A committee of the International Astronomical Union (IAU) has been given the task of deciding the matter. While this sounds like an issue of semantics, the astronomers making the decision must weigh our increasing knowledge of our planetary system and of how planets are thought to form.

At stake are not only the millions of elementary school text books and solar system charts across the globe but also the name for the new world. 2003UB313 is just a sort of catalog number. An official name hangs in the balance of the IAU's decision—planets and Kuiper Belt objects are named differently. Like expectant parents who do not know if they will be having a boy or a girl, the astronomers who made the discovery have chosen a name for each eventuality. As of this writing the IAU's committee has yet to render an opinion on the issue. When they do the solar system may be left with just eight planets or perhaps the number will be pushed up to ten. The universe does not care what the final decision will be, but we will finally know what to call this new discovery in our little corner of it.



Discovery images of 2003UB313

*Little Telescope, continued from page 2*

for "three"). The telescopes are located in California, Arizona and Tenerife, Spain. Observation of the same area of the sky with each of the telescopes allows for continuous monitoring even if weather shuts down one of the telescopes. In 2004, this TrES collaboration announced the discovery of the closest planet to have been identified by its transits of a star. The planet, cleverly denoted by the name TrES-1, lies over 500 light-years away. Despite this distance, the TrES group was able to detect infrared emission from this planet—the first direct observation of light from an exoplanet. Several of the other known transiting planets are much further away than TrES-1, beyond the reach of current follow-up facilities, so this planet produces a valuable opportunity to study the structure of exoplanets and the composition of their atmospheres.

Many hours of work by professional astronomers were spent before the discovery of TrES-1. But any enthusiast can find the host star (at 19h 04m 10s +36d 37m 57s, J2000) and observe it using amateur telescopes similar to Sleuth. Indeed, many amateur astronomers are joining the hunt for transiting planets as part of the transitsearch.org network. If you too can escape the light pollution, I invite you to enjoy the night sky, and think of Sleuth, the tireless workhorse, quietly studying thousands of stars for signs of TrES-2, -3 and maybe even -4, and providing the foundation for the discovery of other Earths.