

Dominic Cox Architect

Born 6th October 1963, London
 Nationality British
 Contact dghCox@gmail.com
 Portfolio <http://picasaweb.google.com/coxRIBA>
 Availability 10 weeks



Profile

Senior Architect with wide-ranging design and technical experience of high quality residential, hospitality, health care and conservation sectors. Detailed knowledge of modern methods of construction and sustainability criteria.

Key skills include: balancing design intent with cost, application of diagrammatic tools, conveying ideas imaginatively, resolving architectural and construction problems, intelligent application of CAD and document control procedures.

Career Aims

Responsive, sophisticated Architecture for the modern world to make its own, serve its needs, and reconcile its future.

Education + Training

1990 RIBA Part III, Professional Practice
 University of Cambridge

1987-1989 RIBA Part II, Dipl. Archit. (Commendation)
 University of Cambridge

1983-1986 RIBA Part I, BA (Hons) 2.1
 University of Cambridge.

Professional Experience

Hotels + Commercial

2008- Current **Peter Dew and Aukett Fitzroy Robinson** (Contract)
 Site-based Project Architect to four and three star hotels for the Rezidor group, at Yas Island, Abu Dhabi Formula 1 race-track resort. Approving materials, products, shop drawings, and executed work, with special responsibility for the quality and co-ordination of pre-fabricated light-metal 'pod' bathroom units to guestrooms and suites. Closely working alongside the main contractor's Quality Control Engineers, to ensure that the highest possible results were achieved, throughout the tight program to meet the Race-day deadline on 31-October, 2009.

1995 – 1997 **Tim Drewitt Associates** (Contract)
 Project Architect: Stables Markets, London Nw1: scheme design, planning and historic building consents, for re-development of rail and canal heritage site. Mixed-use proposal with challenging site constraints.

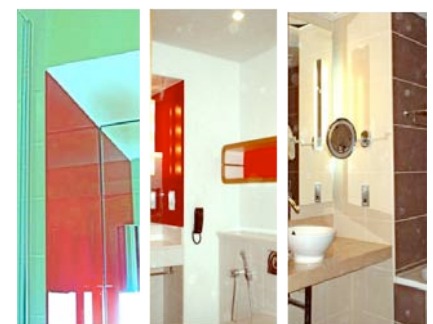
1986 – 1988 **Stewart McColl Architects** (Year-out)
 Assistant: retail chain 'Principles' at Hereford town centre, High Holborn London, Kensington High Street Shopping Mall, London and The Headway, Leeds.

Residential

2002- 2003 **Lisette Khalastchi Architects** (Contract)
 Extensive alterations to an urban villa, Primrose Hill. Vibrant interior design concepts and fine detailing. A garden sequence included an 'endless' (jet propelled) swimming pool. A decked terrace culminated in a controlled, meditative space. Environmentally innovative, incorporating heated glazing, and sustainable materials.

2002 **Tim Drewitt Associates** (Contract)
 The Lake House, Hertfordshire - Sumptuous £2M modernist villa, set in landscaped lakeland created by flooding dis-used brick pit. The project was the subject of PPG13 approval to promote contemporary design in sensitive contexts.

1999-2002 **Paskin Kyriakides Sands Architects** (Permanent)
 Design team leader: Bouygues-UK's £70M re-development of Kings College, Chelsea - 288 new-build, dual-aspect apartments and penthouses, and conversion of historic courtyard centerpiece (St Mark's College), to luxury town houses, all set in the fine landscaped parkland of listed II* Stanley Grove House.

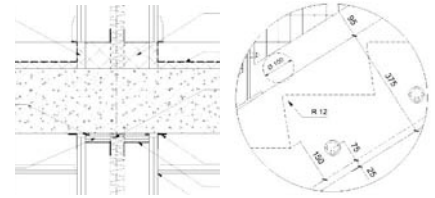


Historic Buildings

2004 – 2006

Roger Mears Architects (Permanent)

Project Architect: alterations, repairs and refurbishments. Conservation practice working closely with The Society for Protection of Ancient Buildings. Conflicts between new and old fabric, reconciled to achieve balanced, unobtrusive results. Focus on Georgian town houses and an historic timber framed farmhouse in Surrey. Proposals for enabling schemes to finance the conservation of Buildings at Risk.



Social Housing

2006 – 2008

Yurky Cross Architects (Permanent)

Project Architect: fast-track, nine storey, mixed-tenure, affordable housing tower at Romford town centre, East London: £5.5M Design & Build Partnership project with the Durkan & Dominion Groups. Modern Methods of Construction, sustainable energy and ecohomes rating, ensured a high standard of quality. Other duties: studio supervisor for CAD and production information procedures.



1998- 1999

Curl La Tourelle Architects (Contract)

Assistant Architect: pre-fabricated light-gauge, cold-formed steel housing innovations with The Forge Co. UK and Michael Barclay Engineering Partnership. Public and private light-weight penthouses. Prototypes for special-needs modular housing.



1989 – 1991

ARP Architects (Part II Pupil)

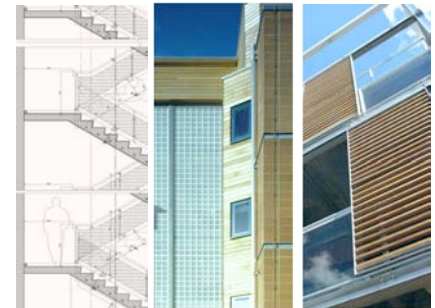
Assistant: range of new-build and refurbishment social housing projects in London, with Oliver Probyn and Tim Lamerton (Pt III supervisor).

Health + Education

2003 – 2004

Penoyre + Prasad Architects (Contract)

Design Team Co-ordinator: 'Heart of Hounslow' - £15M public-private finance initiative with a London Primary Care Trust ('Building Better Health'). Responsible for envelope design and cost control to fast-track program. Conceived as an indoor 'street', the project showcased the health-care design philosophy of a progressive practice, at a new larger scale.



1995 – 1996

Kit Allsopp Architects (Contract)

Assistant Architect: North Middlesex Hospital Trust - £5M new-build A & E ward, courtyard infill scheme; clinical adjacencies and space planning for the NHS Trust.

Other Work

2007 – 2008

Private Clients Normandy

Conversion of historic barn to create studio and apartment, at the Chateau of Mesnières-en-Bray, Haute Normandie: Permis de Construire and Batiments de France (SDAP) consent, Rouen.



1995 – 1996

Private Clients London

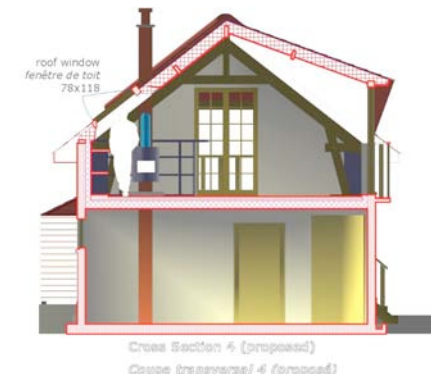
Eco-refurbishment and extension of terraced town house: solar heating, reclaimed and ecological materials for 'green' clients.



1992 – 1994

Griffin Brown Young Architects (Permanent)

Urban design proposals in South and East London. Competitions included European and HM Belmarsh visitor centre.



Referees

Peter Dew

peterdew@emirates.net.ae

Roger Mears

rm@rogermears.com

Tim Drewitt

tim.drewitt@btinternet.com

Lisette Khalastchi

lisette@laguna-hotel.com