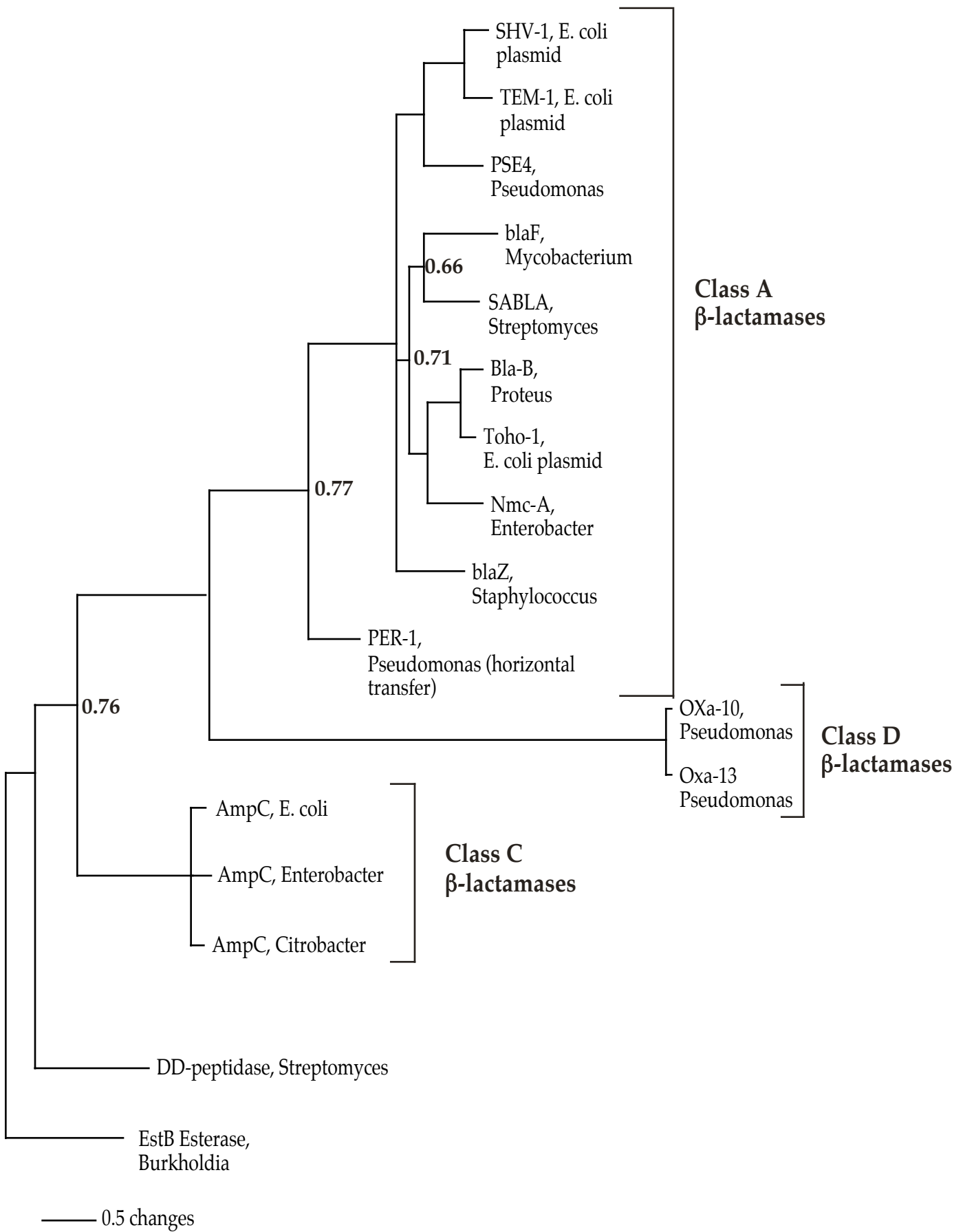


Serine β -lactamases Structural Phylogeny



Hall, B.G. and M..Barlow. 2003. Structure based phylogenies of the serine β -lactamases. J. Mol. Evol. 57: 255-260.

PDB Number	Name	Class	DNA Accession Number	Organism
1M40	TEM-1	A	AF309824	Escherichia coli (plasmid)
1HZO	Bla-B	A	D37831	Proteus vulgaris K1
1I2S	BEPEN	A	V00093	Bacillus licheniformis
1G68	PSE-4	A	J05162	Pseudomonas aeruginosa
1FR6	Cfre-AmpC	C	AF492447	Citrobacter freundii
1E25	PER-1	A	Z21957	Pseudomonas aeruginosa (horizor transfer)
1MFO	blaF	A	L25634	Mycobacterium fortuitum
1BUE	Nmc-A	A	Z21956	Enterobacter cloacae
1BZA	Toho-1	A	AB038771	Escherichia coli (plasmid)
1BSG	SABLA	A	M28303	Streptomyces albus G
2BLS	AmpC-Eco	C	AF124202	Escherichia coli
3PTE	DD-Pep	DD-pep	M26842	Streptomyces lividans
1BLS	AmpC-Ent	C	AF411148	Enterobacter cloaceae
3BLM	blaZ	A	AP003139	Staphylococcus aureus
1K4F	Oxa-10	D	XXU37105	
1H8Z	Oxa-13	D	AF315786	Pseudomonas aeruginosa
1SHV	SHV-1	A	M59181	Klebsiella pneumoniae
1CI9	Estb	Esterase	U33634	Burkholderia gladioli