

# Melodic Minor Pentatonic applications

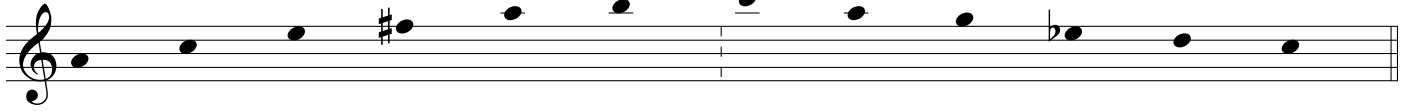
V7 - im

Three staves of musical notation in treble clef, key of D major. The first staff shows a melodic line starting on D4, moving up stepwise to A4, then down stepwise to D4. The second staff shows a similar line starting on E4, moving up to B4, then down to E4. The third staff shows a line starting on F#4, moving up to C#5, then down to F#4. Each staff contains two measures of music, with a double bar line in the middle of each staff.

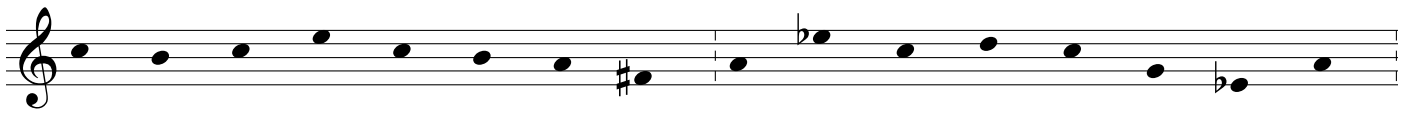
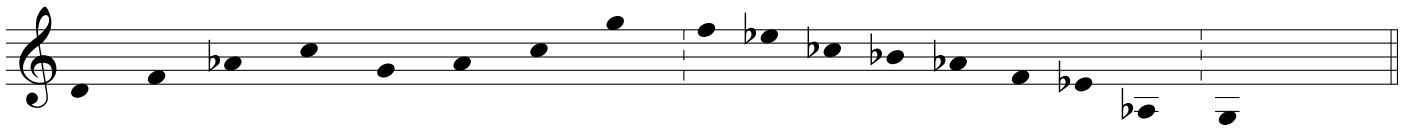
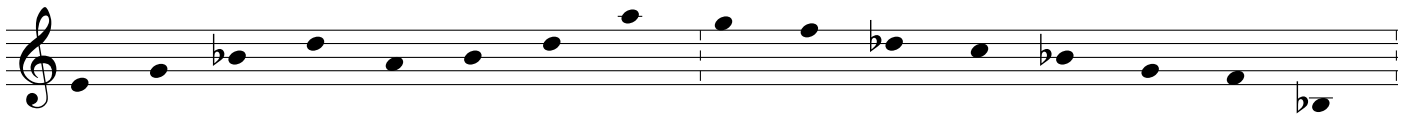
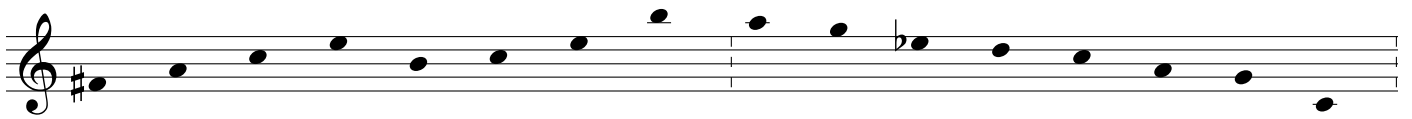
bVI7 - V7 - im

Four staves of musical notation in treble clef, key of D major. The first staff shows a melodic line starting on D4, moving up to A4, then down to D4. The second staff shows a line starting on E4, moving up to B4, then down to E4. The third staff shows a line starting on F#4, moving up to C#5, then down to F#4. The fourth staff shows a line starting on G#4, moving up to D5, then down to G#4. Each staff contains two measures of music, with a double bar line in the middle of each staff.

iiø7 - V7



bvø7 - VII7 - iiiø7 - VI7 - iiø7 - V7 - I



bvø7 - ivm6 - I

