



F4

Musical notation for the F4 chord progression. The notation is on a single staff with a treble clef and a key signature of one flat (Bb). It consists of 12 measures of music, primarily using block chords. The notes are: F4 (quarter), Bb4 (quarter), Bb4 (quarter), F4 (quarter), Bb4 (quarter), Bb4 (quarter), F4 (quarter), Bb4 (quarter), Bb4 (quarter), F4 (quarter), Bb4 (quarter), Bb4 (quarter). The final measure contains a double bar line.

Bb7sus4

Musical notation for the Bb7sus4 chord progression. The notation is on a single staff with a treble clef and a key signature of one flat (Bb). It consists of 12 measures of music, primarily using block chords. The notes are: Bb4 (quarter), F4 (quarter), Bb4 (quarter), Bb4 (quarter), Bb4 (quarter), F4 (quarter), Bb4 (quarter), Bb4 (quarter), Bb4 (quarter), F4 (quarter), Bb4 (quarter), Bb4 (quarter). The final measure contains a double bar line.

Ebsus2(4)

Musical notation for the Ebsus2(4) chord progression. The notation is on a single staff with a treble clef and a key signature of one flat (Bb). It consists of 12 measures of music, primarily using block chords. The notes are: Eb4 (quarter), Bb4 (quarter), Eb4 (quarter), Bb4 (quarter), Eb4 (quarter), Bb4 (quarter), Eb4 (quarter), Bb4 (quarter), Eb4 (quarter), Bb4 (quarter), Eb4 (quarter), Bb4 (quarter). The final measure contains a double bar line.

Ab<sup>6</sup><sub>9</sub>

Musical notation for the Ab<sup>6</sup><sub>9</sub> chord progression. The notation is on a single staff with a treble clef and a key signature of one flat (Bb). It consists of 12 measures of music, primarily using block chords. The notes are: Ab4 (quarter), Bb4 (quarter), Ab4 (quarter), Bb4 (quarter), Ab4 (quarter), Bb4 (quarter), Ab4 (quarter), Bb4 (quarter), Ab4 (quarter), Bb4 (quarter), Ab4 (quarter), Bb4 (quarter). The final measure contains a double bar line.

C#4

Musical notation for the C#4 chord progression. The notation is written on a grand staff (treble and bass clefs). The key signature has two sharps (F# and C#). The progression consists of four measures, each containing a complex chord structure with multiple notes and accidentals.

F#7sus4

Musical notation for the F#7sus4 chord progression. The notation is written on a grand staff. The key signature has two sharps. The progression consists of four measures, each containing a complex chord structure with multiple notes and accidentals.

Bsus2(4)

Musical notation for the Bsus2(4) chord progression. The notation is written on a grand staff. The key signature has two sharps. The progression consists of four measures, each containing a complex chord structure with multiple notes and accidentals.

E<sup>6</sup><sub>9</sub>

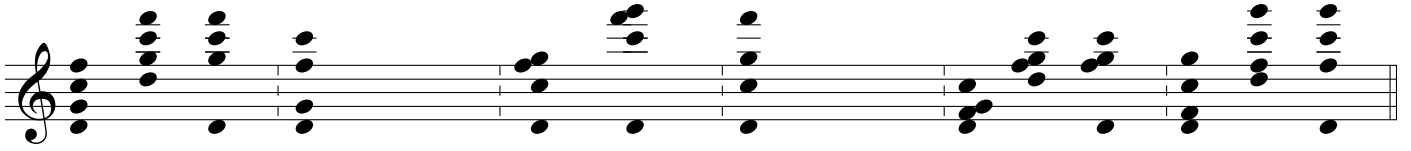
Musical notation for the E<sup>6</sup><sub>9</sub> and E<sub>5</sub> chord progression. The notation is written on a grand staff. The key signature has two sharps. The progression consists of four measures, each containing a complex chord structure with multiple notes and accidentals. The label E<sub>5</sub> is placed above the final measure.



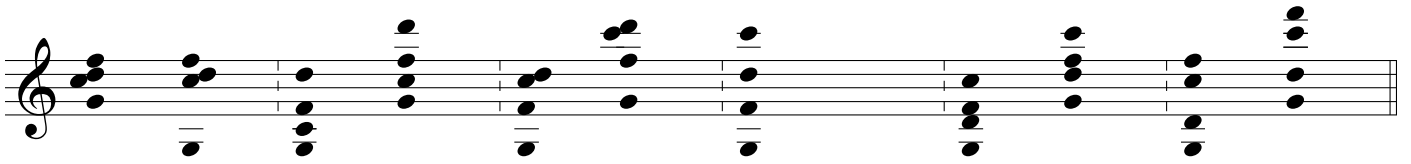
F#4

A musical staff in treble clef showing a sequence of chords for the F#4 chord. The notes are: F#4 (F#4), G#4 (G#4), A4 (A4), B4 (B4), C#5 (C#5), D5 (D5), E5 (E5), F#5 (F#5), G#5 (G#5), A5 (A5), B5 (B5), C#6 (C#6), D6 (D6), E6 (E6), F#6 (F#6), G#6 (G#6), A6 (A6), B6 (B6), C#7 (C#7), D7 (D7), E7 (E7), F#7 (F#7), G#7 (G#7), A7 (A7), B7 (B7), C#8 (C#8), D8 (D8), E8 (E8), F#8 (F#8), G#8 (G#8), A8 (A8), B8 (B8), C#9 (C#9), D9 (D9), E9 (E9), F#9 (F#9), G#9 (G#9), A9 (A9), B9 (B9), C#10 (C#10), D10 (D10), E10 (E10), F#10 (F#10), G#10 (G#10), A10 (A10), B10 (B10), C#11 (C#11), D11 (D11), E11 (E11), F#11 (F#11), G#11 (G#11), A11 (A11), B11 (B11), C#12 (C#12), D12 (D12), E12 (E12), F#12 (F#12), G#12 (G#12), A12 (A12), B12 (B12), C#13 (C#13), D13 (D13), E13 (E13), F#13 (F#13), G#13 (G#13), A13 (A13), B13 (B13), C#14 (C#14), D14 (D14), E14 (E14), F#14 (F#14), G#14 (G#14), A14 (A14), B14 (B14), C#15 (C#15), D15 (D15), E15 (E15), F#15 (F#15), G#15 (G#15), A15 (A15), B15 (B15), C#16 (C#16), D16 (D16), E16 (E16), F#16 (F#16), G#16 (G#16), A16 (A16), B16 (B16), C#17 (C#17), D17 (D17), E17 (E17), F#17 (F#17), G#17 (G#17), A17 (A17), B17 (B17), C#18 (C#18), D18 (D18), E18 (E18), F#18 (F#18), G#18 (G#18), A18 (A18), B18 (B18), C#19 (C#19), D19 (D19), E19 (E19), F#19 (F#19), G#19 (G#19), A19 (A19), B19 (B19), C#20 (C#20), D20 (D20), E20 (E20), F#20 (F#20), G#20 (G#20), A20 (A20), B20 (B20), C#21 (C#21), D21 (D21), E21 (E21), F#21 (F#21), G#21 (G#21), A21 (A21), B21 (B21), C#22 (C#22), D22 (D22), E22 (E22), F#22 (F#22), G#22 (G#22), A22 (A22), B22 (B22), C#23 (C#23), D23 (D23), E23 (E23), F#23 (F#23), G#23 (G#23), A23 (A23), B23 (B23), C#24 (C#24), D24 (D24), E24 (E24), F#24 (F#24), G#24 (G#24), A24 (A24), B24 (B24), C#25 (C#25), D25 (D25), E25 (E25), F#25 (F#25), G#25 (G#25), A25 (A25), B25 (B25), C#26 (C#26), D26 (D26), E26 (E26), F#26 (F#26), G#26 (G#26), A26 (A26), B26 (B26), C#27 (C#27), D27 (D27), E27 (E27), F#27 (F#27), G#27 (G#27), A27 (A27), B27 (B27), C#28 (C#28), D28 (D28), E28 (E28), F#28 (F#28), G#28 (G#28), A28 (A28), B28 (B28), C#29 (C#29), D29 (D29), E29 (E29), F#29 (F#29), G#29 (G#29), A29 (A29), B29 (B29), C#30 (C#30), D30 (D30), E30 (E30), F#30 (F#30), G#30 (G#30), A30 (A30), B30 (B30), C#31 (C#31), D31 (D31), E31 (E31), F#31 (F#31), G#31 (G#31), A31 (A31), B31 (B31), C#32 (C#32), D32 (D32), E32 (E32), F#32 (F#32), G#32 (G#32), A32 (A32), B32 (B32), C#33 (C#33), D33 (D33), E33 (E33), F#33 (F#33), G#33 (G#33), A33 (A33), B33 (B33), C#34 (C#34), D34 (D34), E34 (E34), F#34 (F#34), G#34 (G#34), A34 (A34), B34 (B34), C#35 (C#35), D35 (D35), E35 (E35), F#35 (F#35), G#35 (G#35), A35 (A35), B35 (B35), C#36 (C#36), D36 (D36), E36 (E36), F#36 (F#36), G#36 (G#36), A36 (A36), B36 (B36), C#37 (C#37), D37 (D37), E37 (E37), F#37 (F#37), G#37 (G#37), A37 (A37), B37 (B37), C#38 (C#38), D38 (D38), E38 (E38), F#38 (F#38), G#38 (G#38), A38 (A38), B38 (B38), C#39 (C#39), D39 (D39), E39 (E39), F#39 (F#39), G#39 (G#39), A39 (A39), B39 (B39), C#40 (C#40), D40 (D40), E40 (E40), F#40 (F#40), G#40 (G#40), A40 (A40), B40 (B40), C#41 (C#41), D41 (D41), E41 (E41), F#41 (F#41), G#41 (G#41), A41 (A41), B41 (B41), C#42 (C#42), D42 (D42), E42 (E42), F#42 (F#42), G#42 (G#42), A42 (A42), B42 (B42), C#43 (C#43), D43 (D43), E43 (E43), F#43 (F#43), G#43 (G#43), A43 (A43), B43 (B43), C#44 (C#44), D44 (D44), E44 (E44), F#44 (F#44), G#44 (G#44), A44 (A44), B44 (B44), C#45 (C#45), D45 (D45), E45 (E45), F#45 (F#45), G#45 (G#45), A45 (A45), B45 (B45), C#46 (C#46), D46 (D46), E46 (E46), F#46 (F#46), G#46 (G#46), A46 (A46), B46 (B46), C#47 (C#47), D47 (D47), E47 (E47), F#47 (F#47), G#47 (G#47), A47 (A47), B47 (B47), C#48 (C#48), D48 (D48), E48 (E48), F#48 (F#48), G#48 (G#48), A48 (A48), B48 (B48), C#49 (C#49), D49 (D49), E49 (E49), F#49 (F#49), G#49 (G#49), A49 (A49), B49 (B49), C#50 (C#50), D50 (D50), E50 (E50), F#50 (F#50), G#50 (G#50), A50 (A50), B50 (B50), C#51 (C#51), D51 (D51), E51 (E51), F#51 (F#51), G#51 (G#51), A51 (A51), B51 (B51), C#52 (C#52), D52 (D52), E52 (E52), F#52 (F#52), G#52 (G#52), A52 (A52), B52 (B52), C#53 (C#53), D53 (D53), E53 (E53), F#53 (F#53), G#53 (G#53), A53 (A53), B53 (B53), C#54 (C#54), D54 (D54), E54 (E54), F#54 (F#54), G#54 (G#54), A54 (A54), B54 (B54), C#55 (C#55), D55 (D55), E55 (E55), F#55 (F#55), G#55 (G#55), A55 (A55), B55 (B55), C#56 (C#56), D56 (D56), E56 (E56), F#56 (F#56), G#56 (G#56), A56 (A56), B56 (B56), C#57 (C#57), D57 (D57), E57 (E57), F#57 (F#57), G#57 (G#57), A57 (A57), B57 (B57), C#58 (C#58), D58 (D58), E58 (E58), F#58 (F#58), G#58 (G#58), A58 (A58), B58 (B58), C#59 (C#59), D59 (D59), E59 (E59), F#59 (F#59), G#59 (G#59), A59 (A59), B59 (B59), C#60 (C#60), D60 (D60), E60 (E60), F#60 (F#60), G#60 (G#60), A60 (A60), B60 (B60), C#61 (C#61), D61 (D61), E61 (E61), F#61 (F#61), G#61 (G#61), A61 (A61), B61 (B61), C#62 (C#62), D62 (D62), E62 (E62), F#62 (F#62), G#62 (G#62), A62 (A62), B62 (B62), C#63 (C#63), D63 (D63), E63 (E63), F#63 (F#63), G#63 (G#63), A63 (A63), B63 (B63), C#64 (C#64), D64 (D64), E64 (E64), F#64 (F#64), G#64 (G#64), A64 (A64), B64 (B64), C#65 (C#65), D65 (D65), E65 (E65), F#65 (F#65), G#65 (G#65), A65 (A65), B65 (B65), C#66 (C#66), D66 (D66), E66 (E66), F#66 (F#66), G#66 (G#66), A66 (A66), B66 (B66), C#67 (C#67), D67 (D67), E67 (E67), F#67 (F#67), G#67 (G#67), A67 (A67), B67 (B67), C#68 (C#68), D68 (D68), E68 (E68), F#68 (F#68), G#68 (G#68), A68 (A68), B68 (B68), C#69 (C#69), D69 (D69), E69 (E69), F#69 (F#69), G#69 (G#69), A69 (A69), B69 (B69), C#70 (C#70), D70 (D70), E70 (E70), F#70 (F#70), G#70 (G#70), A70 (A70), B70 (B70), C#71 (C#71), D71 (D71), E71 (E71), F#71 (F#71), G#71 (G#71), A71 (A71), B71 (B71), C#72 (C#72), D72 (D72), E72 (E72), F#72 (F#72), G#72 (G#72), A72 (A72), B72 (B72), C#73 (C#73), D73 (D73), E73 (E73), F#73 (F#73), G#73 (G#73), A73 (A73), B73 (B73), C#74 (C#74), D74 (D74), E74 (E74), F#74 (F#74), G#74 (G#74), A74 (A74), B74 (B74), C#75 (C#75), D75 (D75), E75 (E75), F#75 (F#75), G#75 (G#75), A75 (A75), B75 (B75), C#76 (C#76), D76 (D76), E76 (E76), F#76 (F#76), G#76 (G#76), A76 (A76), B76 (B76), C#77 (C#77), D77 (D77), E77 (E77), F#77 (F#77), G#77 (G#77), A77 (A77), B77 (B77), C#78 (C#78), D78 (D78), E78 (E78), F#78 (F#78), G#78 (G#78), A78 (A78), B78 (B78), C#79 (C#79), D79 (D79), E79 (E79), F#79 (F#79), G#79 (G#79), A79 (A79), B79 (B79), C#80 (C#80), D80 (D80), E80 (E80), F#80 (F#80), G#80 (G#80), A80 (A80), B80 (B80), C#81 (C#81), D81 (D81), E81 (E81), F#81 (F#81), G#81 (G#81), A81 (A81), B81 (B81), C#82 (C#82), D82 (D82), E82 (E82), F#82 (F#82), G#82 (G#82), A82 (A82), B82 (B82), C#83 (C#83), D83 (D83), E83 (E83), F#83 (F#83), G#83 (G#83), A83 (A83), B83 (B83), C#84 (C#84), D84 (D84), E84 (E84), F#84 (F#84), G#84 (G#84), A84 (A84), B83 (B83), C#85 (C#85), D85 (D85), E85 (E85), F#85 (F#85), G#85 (G#85), A85 (A85), B84 (B84), C#86 (C#86), D86 (D86), E86 (E86), F#86 (F#86), G#86 (G#86), A86 (A86), B85 (B85), C#87 (C#87), D87 (D87), E87 (E87), F#87 (F#87), G#87 (G#87), A87 (A87), B86 (B86), C#88 (C#88), D88 (D88), E88 (E88), F#88 (F#88), G#88 (G#88), A88 (A88), B87 (B87), C#89 (C#89), D89 (D89), E89 (E89), F#89 (F#89), G#89 (G#89), A89 (A89), B88 (B88), C#90 (C#90), D90 (D90), E90 (E90), F#90 (F#90), G#90 (G#90), A90 (A90), B89 (B89), C#91 (C#91), D91 (D91), E91 (E91), F#91 (F#91), G#91 (G#91), A91 (A91), B90 (B90), C#92 (C#92), D92 (D92), E92 (E92), F#92 (F#92), G#92 (G#92), A92 (A92), B91 (B91), C#93 (C#93), D93 (D93), E93 (E93), F#93 (F#93), G#93 (G#93), A93 (A93), B92 (B92), C#94 (C#94), D94 (D94), E94 (E94), F#94 (F#94), G#94 (G#94), A94 (A94), B93 (B93), C#95 (C#95), D95 (D95), E95 (E95), F#95 (F#95), G#95 (G#95), A95 (A95), B94 (B94), C#96 (C#96), D96 (D96), E96 (E96), F#96 (F#96), G#96 (G#96), A96 (A96), B95 (B95), C#97 (C#97), D97 (D97), E97 (E97), F#97 (F#97), G#97 (G#97), A97 (A97), B96 (B96), C#98 (C#98), D98 (D98), E98 (E98), F#98 (F#98), G#98 (G#98), A98 (A98), B97 (B97), C#99 (C#99), D99 (D99), E99 (E99), F#99 (F#99), G#99 (G#99), A99 (A99), B98 (B98), C#100 (C#100), D100 (D100), E100 (E100), F#100 (F#100), G#100 (G#100), A100 (A100), B99 (B99), C#101 (C#101), D101 (D101), E101 (E101), F#101 (F#101), G#101 (G#101), A101 (A101), B100 (B100), C#102 (C#102), D102 (D102), E102 (E102), F#102 (F#102), G#102 (G#102), A102 (A102), B101 (B101), C#103 (C#103), D103 (D103), E103 (E103), F#103 (F#103), G#103 (G#103), A103 (A103), B102 (B102), C#104 (C#104), D104 (D104), E104 (E104), F#104 (F#104), G#104 (G#104), A104 (A104), B103 (B103), C#105 (C#105), D105 (D105), E105 (E105), F#105 (F#105), G#105 (G#105), A105 (A105), B104 (B104), C#106 (C#106), D106 (D106), E106 (E106), F#106 (F#106), G#106 (G#106), A106 (A106), B105 (B105), C#107 (C#107), D107 (D107), E107 (E107), F#107 (F#107), G#107 (G#107), A107 (A107), B106 (B106), C#108 (C#108), D108 (D108), E108 (E108), F#108 (F#108), G#108 (G#108), A108 (A108), B107 (B107), C#109 (C#109), D109 (D109), E109 (E109), F#109 (F#109), G#109 (G#109), A109 (A109), B108 (B108), C#110 (C#110), D110 (D110), E110 (E110), F#110 (F#110), G#110 (G#110), A110 (A110), B109 (B109), C#111 (C#111), D111 (D111), E111 (E111), F#111 (F#111), G#111 (G#111), A111 (A111), B110 (B110), C#112 (C#112), D112 (D112), E112 (E112), F#112 (F#112), G#112 (G#112), A112 (A112), B111 (B111), C#113 (C#113), D113 (D113), E113 (E113), F#113 (F#113), G#113 (G#113), A113 (A113), B112 (B112), C#114 (C#114), D114 (D114), E114 (E114), F#114 (F#114), G#114 (G#114), A114 (A114), B113 (B113), C#115 (C#115), D115 (D115), E115 (E115), F#115 (F#115), G#115 (G#115), A115 (A115), B114 (B114), C#116 (C#116), D116 (D116), E116 (E116), F#116 (F#116), G#116 (G#116), A116 (A116), B115 (B115), C#117 (C#117), D117 (D117), E117 (E117), F#117 (F#117), G#117 (G#117), A117 (A117), B116 (B116), C#118 (C#118), D118 (D118), E118 (E118), F#118 (F#118), G#118 (G#118), A118 (A118), B117 (B117), C#119 (C#119), D119 (D119), E119 (E119), F#119 (F#119), G#119 (G#119), A119 (A119), B118 (B118), C#120 (C#120), D120 (D120), E120 (E120), F#120 (F#120), G#120 (G#120), A120 (A120), B119 (B119), C#121 (C#121), D121 (D121), E121 (E121), F#121 (F#121), G#121 (G#121), A121 (A121), B120 (B120), C#122 (C#122), D122 (D122), E122 (E122), F#122 (F#122), G#122 (G#122), A122 (A122), B121 (B121), C#123 (C#123), D123 (D123), E123 (E123), F#123 (F#123), G#123 (G#123), A123 (A123), B122 (B122), C#124 (C#124), D124 (D124), E124 (E124), F#124 (F#124), G#124 (G#124), A124 (A124), B123 (B123), C#125 (C#125), D125 (D125), E125 (E125), F#125 (F#125), G#125 (G#125), A125 (A125), B124 (B124), C#126 (C#126), D126 (D126), E126 (E126), F#126 (F#126), G#126 (G#126), A126 (A126), B125 (B125), C#127 (C#127), D127 (D127), E127 (E127), F#127 (F#127), G#127 (G#127), A127 (A127), B126 (B126), C#128 (C#128), D128 (D128), E128 (E128), F#128 (F#128), G#128 (G#128), A128 (A128), B127 (B127), C#129 (C#129), D129 (D129), E129 (E129), F#129 (F#129), G#129 (G#129), A129 (A129), B128 (B128), C#130 (C#130), D130 (D130), E130 (E130), F#130 (F#130), G#130 (G#130), A130 (A130), B129 (B129), C#131 (C#131), D131 (D131), E131 (E131), F#131 (F#131), G#131 (G#131), A131 (A131), B130 (B130), C#132 (C#132), D132 (D132), E132 (E132), F#132 (F#132), G#132 (G#132), A132 (A132), B131 (B131), C#133 (C#133), D133 (D133), E133 (E133), F#133 (F#133), G#133 (G#133), A133 (A133), B132 (B132), C#134 (C#134), D134 (D134), E134 (E134), F#134 (F#134), G#134 (G#134), A134 (A134), B133 (B133), C#135 (C#135), D135 (D135), E135 (E135), F#135 (F#135), G#135 (G#135), A135 (A135), B134 (B134), C#136 (C#136), D136 (D136), E136 (E136), F#136 (F#136), G#136 (G#136), A136 (A136), B135 (B135), C#137 (C#137), D137 (D137), E137 (E137), F#137 (F#137), G#137 (G#137), A137 (A137), B136 (B136), C#138 (C#138), D138 (D138), E138 (E138), F#138 (F#138), G#138 (G#138), A138 (A138), B137 (B137), C#139 (C#139), D139 (D139), E139 (E139), F#139 (F#139), G#139 (G#139), A139 (A139), B138 (B138), C#140 (C#140), D140 (D140), E140 (E140), F#140 (F#140), G#140 (G#140), A140 (A140), B139 (B139), C#141 (C#141), D141 (D141), E141 (E141), F#141 (F#141), G#141 (G#141), A141 (A141), B140 (B140), C#142 (C#142), D142 (D142), E142 (E142), F#142 (F#142), G#142 (G#142), A142 (A142), B141 (B141), C#143 (C#143), D143 (D143), E143 (E143), F#143 (F#143), G#143 (G#143), A143 (A143), B142 (B142), C#144 (C#144), D144 (D144), E144 (E144), F#144 (F#144), G#144 (G#144), A144 (A144), B143 (B143), C#145 (C#145), D145 (D145), E145 (E145), F#145 (F#145), G#145 (G#145), A145 (A145), B144 (B144), C#146 (C#146), D146 (D146), E146 (E146), F#146 (F#146), G#146 (G#146), A146 (A146), B145 (B145), C#147 (C#147), D147 (D147), E147 (E147), F#147 (F#147), G#147 (G#147), A147 (A147), B146 (B146), C#148 (C#148), D148 (D148), E148 (E148), F#148 (F#148), G#148 (G#148), A148 (A148), B147 (B147), C#149 (C#149), D149 (D149), E149 (E149), F#149 (F#149), G#149 (G#149), A149 (A149), B148 (B148), C#150 (C#150), D150 (D150), E150 (E150), F#150 (F#150), G#150 (G#150), A150 (A150), B149 (B149), C#151 (C#151), D151 (D151), E151 (E151), F#151 (F#151), G#151 (G#151), A151 (A151), B150 (B150), C#152 (C#152), D152 (D152), E152 (E152), F#152 (F#152), G#152 (G#152), A152 (A152), B151 (B151), C#153 (C#153), D153 (D153), E153 (E153), F#153 (F#153), G#153 (G#153), A153 (A153), B152 (B152), C#154 (C#154), D154 (D154), E154 (E154), F#154 (F#154), G#154 (G#154), A154 (A154), B153 (B153), C#155 (C#155), D155 (D155), E155 (E155), F#155 (F#155), G#155 (G#155), A155 (A155), B154 (B154), C#156 (C#156), D156 (D156), E156 (E156), F#156 (F#156), G#156 (G#156), A156 (A156), B155 (B155), C#157 (C#157), D157 (D157), E157 (E157), F#157 (F#157), G#157 (G#157), A157 (A157), B156 (B156), C#158 (C#158), D158 (D158), E158 (E158), F#158 (F#158), G#158 (G#158), A158 (A158), B157 (B157), C#159 (C#159), D159 (D159), E159 (E159), F#159 (F#159), G#159 (G#159), A159 (A159), B158 (B158), C#160 (C#160), D160 (D160), E160 (E160), F#160 (F#160), G#160 (G#160), A160 (A160), B159 (B159), C#161 (C#161), D161 (D161), E161 (E161), F#161 (F#161), G#161 (G#161), A161 (A161), B160 (B160), C#162 (C#162), D162 (D162), E162 (E162), F#162 (F#162), G#162 (G#162), A162 (A162), B161 (B161), C#163 (C#163), D163 (D163), E163 (E163), F#163 (F#163), G#163 (G#163), A163 (A163), B162 (B162), C#164 (C#164), D164 (D164), E164 (E164), F#164 (F#164), G#164 (G#164), A164 (A164), B163 (B163), C#165 (C#165), D165 (D165), E165 (E165), F#165 (F#165), G#165 (G#165), A165 (A165), B164 (B164), C#166 (C#166), D166 (D166), E166 (E166), F#166 (F#166), G#166 (G#166), A166 (A166), B165 (B165), C#167 (C#167), D167 (D167), E167 (E167), F#167 (F#167), G#167 (G#167), A167 (A167), B166 (B166), C#168 (C#168), D168 (D168), E168 (E168), F#168 (F#168), G#168 (G#168), A168 (A168), B167 (B167), C#169 (C#169), D169 (D169), E169 (E169), F#169 (F#169), G#169 (G#169), A169 (A169), B168 (B168), C#170 (C#170), D170 (D170), E170 (E170), F#170 (F#170), G#170 (G#170), A170 (A170), B169 (B169), C#171 (C#171), D171 (D171), E171 (E171), F#171 (F#171), G#171 (G#171), A171 (A171), B170 (B170), C#172 (C#172), D172 (D172), E172 (E172), F#172 (F#172), G#172 (G#172), A172 (A172), B171 (B171), C#173 (C#173), D173 (D173), E173 (E173), F#173 (F#173), G#173 (G#173), A173 (A173), B172 (B172), C#174 (C#174), D174 (D174), E174 (E174), F#174 (F#174), G#174 (G#174), A174 (A174), B173 (B173), C#175 (C#175), D175 (D175), E175 (E175), F#175 (F#175), G#175 (G#175), A175 (A175), B174 (B174), C#176 (C#176), D176 (D176), E176 (E176), F#176 (F#176), G#176 (G#176), A176 (A176), B175 (B175), C#177 (C#177), D177 (D177), E177 (E177), F#177 (F#177), G#177 (G#177), A177 (A177), B176 (B176), C#178 (C#178), D178 (D178), E178 (E178), F#178 (F#178), G#178 (G#178), A178 (A178), B177 (B177), C#179 (C#179), D179 (D179), E179 (E179), F#179 (F#179), G#179 (G#179), A179 (A179), B178 (B178), C#180 (C#180), D180 (D180), E180 (E180), F#180 (F#180), G#180 (G#180), A180 (A180), B179 (B179), C#181 (C#181), D181 (D181), E181 (E181), F#181 (F#181), G#181 (G#181), A181 (A181), B180 (B180), C#182 (C#182), D182 (D182), E182 (E182), F#182 (F#182), G#182 (G#182), A182 (A182), B181 (B181), C#183 (C#183), D183 (D183), E183 (E183), F#183 (F#183), G#183 (G#183), A183 (A183), B182 (B182), C#184 (C#184), D184 (D184), E184 (E184), F#184 (F#184), G#184 (

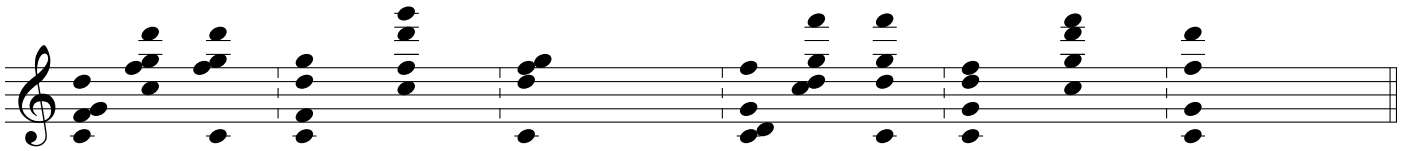
D<sub>4</sub>



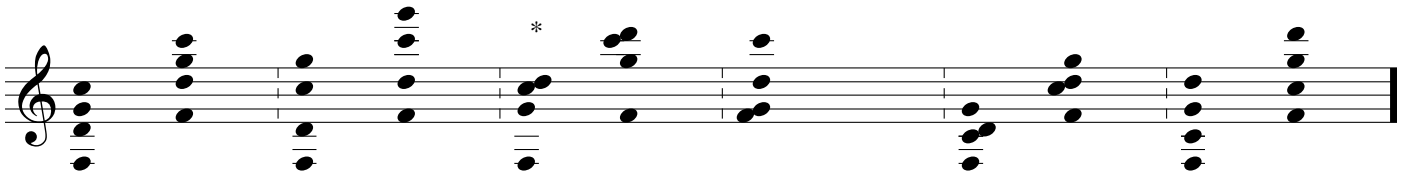
G<sub>7sus4</sub>



C<sub>sus2(4)</sub>



F<sup>6</sup><sub>9</sub>



B<sub>4</sub>

Musical notation for the B<sub>4</sub> chord progression. The notation is on a single staff with a treble clef. It consists of 10 measures of music. The notes are: Measure 1: B4, D5, F#5, G5; Measure 2: B4, D5, F#5, G5; Measure 3: B4, D5, F#5, G5; Measure 4: B4, D5, F#5, G5; Measure 5: B4, D5, F#5, G5; Measure 6: B4, D5, F#5, G5; Measure 7: B4, D5, F#5, G5; Measure 8: B4, D5, F#5, G5; Measure 9: B4, D5, F#5, G5; Measure 10: B4, D5, F#5, G5.

E<sub>7</sub>sus<sub>4</sub>

Musical notation for the E<sub>7</sub>sus<sub>4</sub> chord progression. The notation is on a single staff with a treble clef. It consists of 10 measures of music. The notes are: Measure 1: E4, G#4, B4, D5, F#5, G5; Measure 2: E4, G#4, B4, D5, F#5, G5; Measure 3: E4, G#4, B4, D5, F#5, G5; Measure 4: E4, G#4, B4, D5, F#5, G5; Measure 5: E4, G#4, B4, D5, F#5, G5; Measure 6: E4, G#4, B4, D5, F#5, G5; Measure 7: E4, G#4, B4, D5, F#5, G5; Measure 8: E4, G#4, B4, D5, F#5, G5; Measure 9: E4, G#4, B4, D5, F#5, G5; Measure 10: E4, G#4, B4, D5, F#5, G5.

A<sub>sus2</sub>(4)

Musical notation for the A<sub>sus2</sub>(4) chord progression. The notation is on a single staff with a treble clef. It consists of 10 measures of music. The notes are: Measure 1: A3, C4, E4, G4; Measure 2: A3, C4, E4, G4; Measure 3: A3, C4, E4, G4; Measure 4: A3, C4, E4, G4; Measure 5: A3, C4, E4, G4; Measure 6: A3, C4, E4, G4; Measure 7: A3, C4, E4, G4; Measure 8: A3, C4, E4, G4; Measure 9: A3, C4, E4, G4; Measure 10: A3, C4, E4, G4.

D<sup>6</sup><sub>9</sub>

Musical notation for the D<sup>6</sup><sub>9</sub> chord progression. The notation is on a single staff with a treble clef. It consists of 10 measures of music. The notes are: Measure 1: D4, F#4, A4, B4, C#5, E5; Measure 2: D4, F#4, A4, B4, C#5, E5; Measure 3: D4, F#4, A4, B4, C#5, E5; Measure 4: D4, F#4, A4, B4, C#5, E5; Measure 5: D4, F#4, A4, B4, C#5, E5; Measure 6: D4, F#4, A4, B4, C#5, E5; Measure 7: D4, F#4, A4, B4, C#5, E5; Measure 8: D4, F#4, A4, B4, C#5, E5; Measure 9: D4, F#4, A4, B4, C#5, E5; Measure 10: D4, F#4, A4, B4, C#5, E5.

G4

Musical notation for G4 chord progression. The notation is on a single staff with a treble clef and a key signature of one flat (Bb). It consists of eight measures of music, each containing a chord. The chords are: G4 (Bb, D, F), G4 (Bb, D, F), G4 (Bb, D, F), G4 (Bb, D, F), G4 (Bb, D, F), G4 (Bb, D, F), G4 (Bb, D, F), and G4 (Bb, D, F). The notes are arranged in a way that suggests a specific voicing for each chord.

C7sus4

Musical notation for C7sus4 chord progression. The notation is on a single staff with a treble clef and a key signature of one flat (Bb). It consists of eight measures of music, each containing a chord. The chords are: C7sus4 (Bb, Eb, F, G), C7sus4 (Bb, Eb, F, G), C7sus4 (Bb, Eb, F, G), C7sus4 (Bb, Eb, F, G), C7sus4 (Bb, Eb, F, G), C7sus4 (Bb, Eb, F, G), C7sus4 (Bb, Eb, F, G), and C7sus4 (Bb, Eb, F, G). The notes are arranged in a way that suggests a specific voicing for each chord.

Fsus2(4)

Musical notation for Fsus2(4) chord progression. The notation is on a single staff with a treble clef and a key signature of one flat (Bb). It consists of eight measures of music, each containing a chord. The chords are: Fsus2(4) (Bb, C, D, F), Fsus2(4) (Bb, C, D, F), Fsus2(4) (Bb, C, D, F), Fsus2(4) (Bb, C, D, F), Fsus2(4) (Bb, C, D, F), Fsus2(4) (Bb, C, D, F), Fsus2(4) (Bb, C, D, F), and Fsus2(4) (Bb, C, D, F). The notes are arranged in a way that suggests a specific voicing for each chord.

Bb<sup>6</sup><sub>9</sub>

Musical notation for Bb<sup>6</sup><sub>9</sub> chord progression. The notation is on a single staff with a treble clef and a key signature of one flat (Bb). It consists of eight measures of music, each containing a chord. The chords are: Bb<sup>6</sup><sub>9</sub> (Bb, C, D, F, G, Ab), Bb<sup>6</sup><sub>9</sub> (Bb, C, D, F, G, Ab), Bb<sup>6</sup><sub>9</sub> (Bb, C, D, F, G, Ab), Bb<sup>6</sup><sub>9</sub> (Bb, C, D, F, G, Ab), Bb<sup>6</sup><sub>9</sub> (Bb, C, D, F, G, Ab), Bb<sup>6</sup><sub>9</sub> (Bb, C, D, F, G, Ab), Bb<sup>6</sup><sub>9</sub> (Bb, C, D, F, G, Ab), and Bb<sup>6</sup><sub>9</sub> (Bb, C, D, F, G, Ab). The notes are arranged in a way that suggests a specific voicing for each chord.

E<sup>b</sup><sub>4</sub>

Musical notation for the E<sup>b</sup><sub>4</sub> chord progression. The notation is on a single staff with a treble clef and a key signature of three flats (B-flat, E-flat, A-flat). The progression consists of 12 measures. The first measure contains a complex chord with multiple accidentals. The second measure has a simpler chord. The third measure has a single note. The fourth measure has a single note with a flat. The fifth measure has a single note with a flat. The sixth measure has a single note with a flat. The seventh measure has a single note with a flat. The eighth measure has a single note with a flat. The ninth measure has a single note with a flat. The tenth measure has a single note with a flat. The eleventh measure has a single note with a flat. The twelfth measure has a single note with a flat.

A<sup>b</sup><sub>7</sub>sus<sub>4</sub>

Musical notation for the A<sup>b</sup><sub>7</sub>sus<sub>4</sub> chord progression. The notation is on a single staff with a treble clef and a key signature of three flats (B-flat, E-flat, A-flat). The progression consists of 12 measures. The first measure contains a complex chord with multiple accidentals. The second measure has a simpler chord. The third measure has a single note. The fourth measure has a single note with a flat. The fifth measure has a single note with a flat. The sixth measure has a single note with a flat. The seventh measure has a single note with a flat. The eighth measure has a single note with a flat. The ninth measure has a single note with a flat. The tenth measure has a single note with a flat. The eleventh measure has a single note with a flat. The twelfth measure has a single note with a flat.

D<sup>b</sup>sus<sub>2</sub>(4)

Musical notation for the D<sup>b</sup>sus<sub>2</sub>(4) chord progression. The notation is on a single staff with a treble clef and a key signature of three flats (B-flat, E-flat, A-flat). The progression consists of 12 measures. The first measure contains a complex chord with multiple accidentals. The second measure has a simpler chord. The third measure has a single note. The fourth measure has a single note with a flat. The fifth measure has a single note with a flat. The sixth measure has a single note with a flat. The seventh measure has a single note with a flat. The eighth measure has a single note with a flat. The ninth measure has a single note with a flat. The tenth measure has a single note with a flat. The eleventh measure has a single note with a flat. The twelfth measure has a single note with a flat.

G<sup>b</sup><sub>6</sub><sup>9</sup>

Musical notation for the G<sup>b</sup><sub>6</sub><sup>9</sup> chord progression. The notation is on a single staff with a treble clef and a key signature of three flats (B-flat, E-flat, A-flat). The progression consists of 12 measures. The first measure contains a complex chord with multiple accidentals. The second measure has a simpler chord. The third measure has a single note. The fourth measure has a single note with a flat. The fifth measure has a single note with a flat. The sixth measure has a single note with a flat. The seventh measure has a single note with a flat. The eighth measure has a single note with a flat. The ninth measure has a single note with a flat. The tenth measure has a single note with a flat. The eleventh measure has a single note with a flat. The twelfth measure has a single note with a flat.



A $\flat$ <sub>4</sub>

Musical notation for the A $\flat$ <sub>4</sub> chord. The notation is written on a grand staff (treble and bass clefs). The treble clef part contains a series of chords and intervals, while the bass clef part contains a series of notes and intervals. The key signature has two flats (B $\flat$  and E $\flat$ ).

D $\flat$ <sub>7sus4</sub>

Musical notation for the D $\flat$ <sub>7sus4</sub> chord. The notation is written on a grand staff (treble and bass clefs). The treble clef part contains a series of chords and intervals, while the bass clef part contains a series of notes and intervals. The key signature has two flats (B $\flat$  and E $\flat$ ).

F $\sharp$ <sub>sus2(4)</sub>

Musical notation for the F $\sharp$ <sub>sus2(4)</sub> chord. The notation is written on a grand staff (treble and bass clefs). The treble clef part contains a series of chords and intervals, while the bass clef part contains a series of notes and intervals. The key signature has two sharps (F $\sharp$  and C $\sharp$ ).

B $\flat$ <sub>9</sub>

Musical notation for the B $\flat$ <sub>9</sub> chord. The notation is written on a grand staff (treble and bass clefs). The treble clef part contains a series of chords and intervals, while the bass clef part contains a series of notes and intervals. The key signature has two flats (B $\flat$  and E $\flat$ ).

E4

Musical notation for the E4 chord progression. The notation is on a single staff with a treble clef. It consists of 12 measures of music, each containing a chord. The chords are: E4 (E, G#, B), E4 (E, G#, B), E4 (E, G#, B), E4 (E, G#, B), E4 (E, G#, B), E4 (E, G#, B), E4 (E, G#, B), E4 (E, G#, B), E4 (E, G#, B), E4 (E, G#, B), E4 (E, G#, B), and E4 (E, G#, B). The notes are arranged in a way that suggests a specific voicing for each chord, with some notes appearing in the bass and others in the treble.

A7sus4

Musical notation for the A7sus4 chord progression. The notation is on a single staff with a treble clef. It consists of 12 measures of music, each containing a chord. The chords are: A7sus4 (A, C, E, G), A7sus4 (A, C, E, G), A7sus4 (A, C, E, G), A7sus4 (A, C, E, G), A7sus4 (A, C, E, G), A7sus4 (A, C, E, G), A7sus4 (A, C, E, G), A7sus4 (A, C, E, G), A7sus4 (A, C, E, G), A7sus4 (A, C, E, G), A7sus4 (A, C, E, G), and A7sus4 (A, C, E, G). The notes are arranged in a way that suggests a specific voicing for each chord, with some notes appearing in the bass and others in the treble.

Dsus2(4)

Musical notation for the Dsus2(4) chord progression. The notation is on a single staff with a treble clef. It consists of 12 measures of music, each containing a chord. The chords are: Dsus2(4) (D, F, A), Dsus2(4) (D, F, A), Dsus2(4) (D, F, A), Dsus2(4) (D, F, A), Dsus2(4) (D, F, A), Dsus2(4) (D, F, A), Dsus2(4) (D, F, A), Dsus2(4) (D, F, A), Dsus2(4) (D, F, A), Dsus2(4) (D, F, A), Dsus2(4) (D, F, A), and Dsus2(4) (D, F, A). The notes are arranged in a way that suggests a specific voicing for each chord, with some notes appearing in the bass and others in the treble.

G<sup>6</sup><sub>9</sub>

Musical notation for the G<sup>6</sup><sub>9</sub> chord progression. The notation is on a single staff with a treble clef. It consists of 12 measures of music, each containing a chord. The chords are: G<sup>6</sup><sub>9</sub> (G, B, D, F, A), G<sup>6</sup><sub>9</sub> (G, B, D, F, A), G<sup>6</sup><sub>9</sub> (G, B, D, F, A), G<sup>6</sup><sub>9</sub> (G, B, D, F, A), G<sup>6</sup><sub>9</sub> (G, B, D, F, A), G<sup>6</sup><sub>9</sub> (G, B, D, F, A), G<sup>6</sup><sub>9</sub> (G, B, D, F, A), G<sup>6</sup><sub>9</sub> (G, B, D, F, A), G<sup>6</sup><sub>9</sub> (G, B, D, F, A), G<sup>6</sup><sub>9</sub> (G, B, D, F, A), G<sup>6</sup><sub>9</sub> (G, B, D, F, A), and G<sup>6</sup><sub>9</sub> (G, B, D, F, A). The notes are arranged in a way that suggests a specific voicing for each chord, with some notes appearing in the bass and others in the treble.