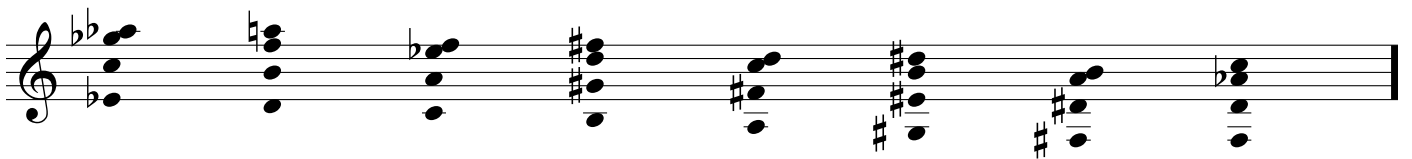
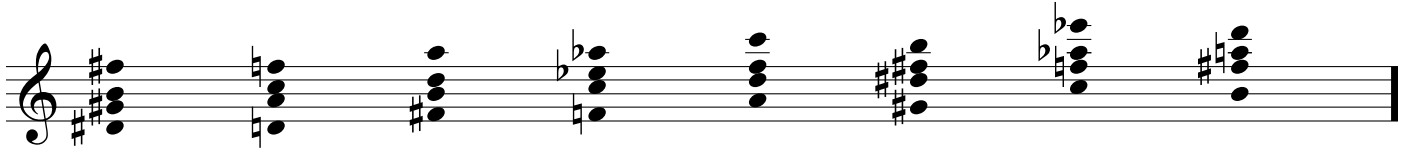
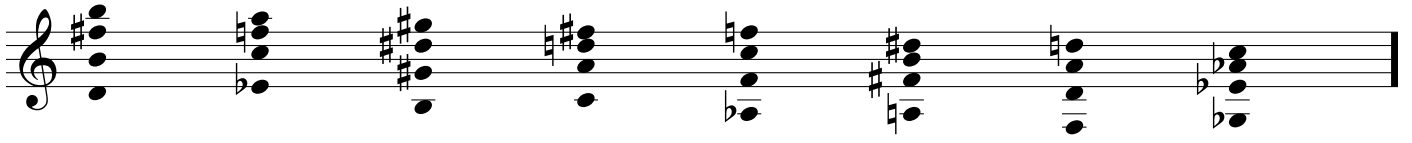


Diminished Scale Harmonized

The image displays a musical score for a diminished scale, harmonized. It is organized into two systems, each consisting of two staves. The first system uses a key signature of one sharp (F#) and a common time signature. The second system uses a key signature of two flats (Bb, Eb) and a common time signature. The notation consists of vertical chord voicings on a five-line staff, with various accidentals (sharps, flats, and naturals) placed above or below the notes to indicate specific intervals and alterations. The chords are arranged in a sequence that follows the structure of a diminished scale, with each chord being a tritone away from the previous one. The first system shows the scale ascending and then descending, while the second system shows the scale descending and then ascending. The notes are grouped into pairs or triplets, representing dyads or triads of the scale.



First musical staff, featuring a treble clef and a key signature of one flat (B-flat). The staff contains six measures of music, each with a chord. The chords are: C major (C4, E4, G4), B-flat major (B-flat4, D5, F5), B-flat major (B-flat4, D5, F5), D major (D4, F#4, A4), D major (D4, F#4, A4), and D major (D4, F#4, A4).

Second musical staff, featuring a treble clef and a key signature of one flat (B-flat). The staff contains six measures of music, each with a chord. The chords are: D major (D4, F#4, A4), D major (D4, F#4, A4), B-flat major (B-flat4, D5, F5), B-flat major (B-flat4, D5, F5), D major (D4, F#4, A4), and D major (D4, F#4, A4).

Third musical staff, featuring a treble clef and a key signature of one flat (B-flat). The staff contains six measures of music, each with a chord. The chords are: D major (D4, F#4, A4), D major (D4, F#4, A4), B-flat major (B-flat4, D5, F5), B-flat major (B-flat4, D5, F5), D major (D4, F#4, A4), and D major (D4, F#4, A4).

Fourth musical staff, featuring a treble clef and a key signature of one flat (B-flat). The staff contains six measures of music, each with a chord. The chords are: D major (D4, F#4, A4), D major (D4, F#4, A4), B-flat major (B-flat4, D5, F5), B-flat major (B-flat4, D5, F5), D major (D4, F#4, A4), and D major (D4, F#4, A4).

Fifth musical staff, featuring a treble clef and a key signature of one flat (B-flat). The staff contains five measures of music, each with a chord. The chords are: D major (D4, F#4, A4), D major (D4, F#4, A4), D major (D4, F#4, A4), D major (D4, F#4, A4), and B-flat major (B-flat4, D5, F5).

Sixth musical staff, featuring a treble clef and a key signature of one flat (B-flat). The staff contains five measures of music, each with a chord. The chords are: D major (D4, F#4, A4), B-flat major (B-flat4, D5, F5), D major (D4, F#4, A4), B-flat major (B-flat4, D5, F5), and D major (D4, F#4, A4).

